

HILLMONT
RESIDENCES

JUMEIRAH VILLAGE CIRCLE

Welcome to

HILLMONT

R E S I D E N C E S

CRAFTING SPACES
THAT INSPIRE



EMBARCKING ON A JOURNEY TO REDEFINE URBAN LIVING

Hillmont Residences is Ellington's newest development in Jumeirah Village Circle, the project epitomizes modern living amidst the circular topography of the community. Its design is more than just aesthetics; it's a reflection of the vibrant community it resides in. The layering of materials and textures pays homage to the diverse landscape of the community, creating a visually stunning masterpiece that seamlessly blends with its surroundings.





CREATING VISUALLY CAPTIVATING SPACES

It is a 12-storey residential building comprising a diverse range of apartment types ranging from studios, and 1 to 3-bedroom apartments. Beyond that, Hillmont Residences fosters a vibrant community spirit with open social spaces and top-notch amenities, inviting residents to connect and thrive – Every aspect of Hillmont Residences embodies contemporary comfort and timeless elegance, offering an unparalleled lifestyle experience in the heart of Jumeirah Village Circle.



CONCENTRIC SEQUENCE

The exterior facade of the building stands as a testament to the thoughtful integration of architecture with the surrounding community. Through a meticulous layering of materials and textures, the facade pays homage to the diverse landscape of the community, capturing its essence in every detail.

ELEVATING THE
STANDARDS OF
EXCELLENCE





Each element of the design is carefully chosen to reflect the richness and dynamism of the environment. From the sleek lines that echo the modernity of Jumeirah Village Circle to the earthy tones that harmonize with the natural beauty of the surroundings, every aspect of the facade is imbued with meaning.



DRIVING DISTANCES

03 MINUTES | FIVE JUMEIRAH VILLAGE CIRCLE

07 MINUTES | CIRCLE MALL

12 MINUTES | DUBAI HILLS MALL

15 MINUTES | DUBAI HILLS GOLF CLUB

19 MINUTES | MALL OF THE EMIRATES

19 MINUTES | BUSINESS BAY

19 MINUTES | JUMEIRAH GOLF ESTATE

21 MINUTES | DUBAI MARINA

21 MINUTES | BURJ AL ARAB

21 MINUTES | JUMEIRAH BEACH

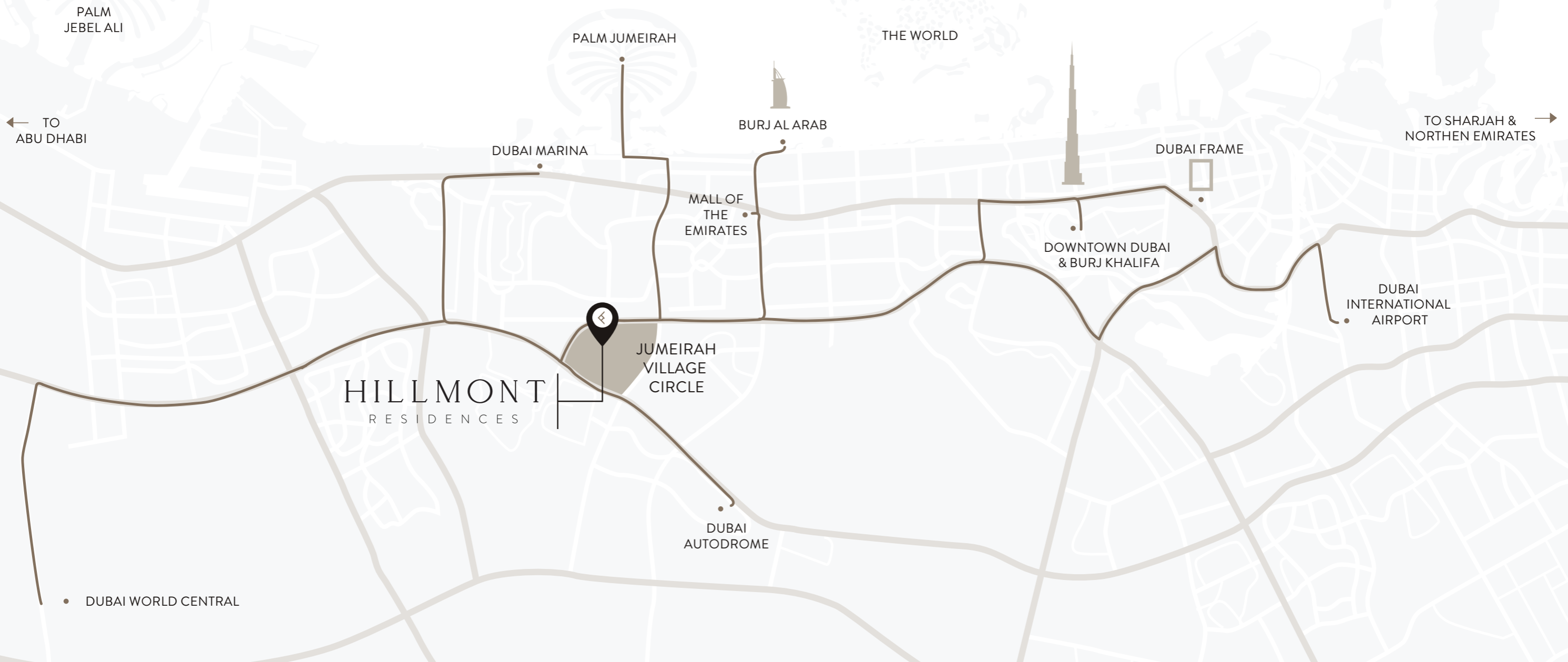
22 MINUTES | DUBAI MALL AND BURJ KHALIFA

23 MINUTES | PALM JUMEIRAH

24 MINUTES | DUBAI INTERNATIONAL FINANCIAL CENTRE

30 MINUTES | DUBAI INTERNATIONAL AIRPORT

30 MINUTES | DUBAI WORLD CENTRAL AIRPORT



ELLINGTON'S PORTFOLIO IN JUMEIRAH VILLAGE CIRCLE



HILLMONT RESIDENCES





WHERE CONNECTIONS FLOURISH

The lobby serves as a captivating blend of sophistication and comfort, offering a warm welcome to residents and guests alike. At its heart stands a striking marble reception desk, a focal point of elegance and functionality. Sunlight floods the space through expansive floor-to-ceiling windows, blurring the lines between indoors and outdoors.

ELLINGTON

HILLMONT
RESIDENCES

CAFE



The neutral color palette, complemented by subtle metallic blue accents, adds a touch of contemporary flair to the surroundings. Within the Lobby Lounge, inspired by the finest in hospitality design, a variety of seating options cater to diverse needs, whether it's for relaxation, socializing, or work. Adorning the walls are original art pieces, carefully selected from the Ellington Art Foundation's collection, infusing the space with cultural depth and artistic vibrancy.



The image shows a modern, minimalist lobby. The focal point is a reception desk with a curved, white marble top and a base of the same material. Behind the desk is a wall of vertical wooden slats. The Ellington Properties logo, featuring a stylized 'E' icon, is mounted on the wall above the desk. The text 'ELLINGTON' is in a large, bold, sans-serif font, and 'PROPERTIES' is in a smaller font below it. To the right of the desk, a cluster of small, spherical pendant lights hangs from the ceiling. On the left, a blue armchair sits on a circular rug. On the right, two potted plants in marble planters are visible. The ceiling has recessed lighting and a long, thin light fixture above the desk.


ELLINGTON
PROPERTIES

THE LOBBY

GROUND FLOOR AMENITIES PLAN

- 1 LOBBY ENTRANCE
- 2 LOBBY LOUNGE
- 3 LOBBY RECEPTION
- 4 LIFT LOBBY
- 5 EV CHARGING STATION
- 6 BICYCLE PARKING
- 7 DOG WASH AREA
- 8 PARKING FOR PEOPLE OF DETERMINATION
- 9 ACCESS TO PARKING ENTRANCE
- 10 ACCESS TO UPPER PARKING
- 11 PEDESTRIAN PATHWAY
- 12 OUTDOOR SEATING AREAS



GROUND FLOOR



Step into our enchanting play area and prepare to be taken away on a journey of wonder and delight. As children enter this captivating space, they are greeted by colors and a symphony of laughter echoing through the air.

A WHOLE NEW ADVENTURE AWAITS

From the cozy kids' size seating areas adorned with plush cushions to the interactive play zones bursting with excitement, every element is thoughtfully designed to ignite the imagination and a sense of wonder. With décors scattered throughout, this magical playground invites young adventurers to explore, create, and make memories that will last a lifetime.





The Clubhouse, nestled within the residence, offers a stylish retreat for residents. Featuring modular seating and book displays, it's perfect for meetings and events. With direct access to the pool and coworking space, it seamlessly blends leisure and productivity. Two soundproof telephone pods cater to privacy or focused work. The striking ceiling design and porcelain floors exude sophistication.





CLUBHOUSE

Residents can reserve the space for private events, enjoying ample natural light and the signature Ellington Hospitality scent throughout.



Surrounded by a row of sun loungers, each one thoughtfully shaded, the pool invites moments of relaxation and leisure. The pool deck is bordered by sleek glass panels, creating a seamless transition between the pool deck and the rest of the outdoors, offering a private sanctuary from the bustling world beyond.



POOL DECK

Through the transparent wall, one can glimpse the vibrant community beyond, adding an element of connection to the serene ambiance.



The Fitness Studio, perched with an expansive view of the pool and lush landscape, serves as the epicenter of wellness within the residence. Furnished with top-of-the-line fitness equipment sourced from renowned and eco-conscious brands, its layout is meticulously designed to optimize every workout.





A JOURNEY INTO WELLNESS

Natural light floods the space through full-height glazing and bifold doors, with roller blinds offering customizable lighting and temperature control. From state-of-the-art cardio machines to Pilates machines and punching bags, the studio boasts amenities that include yoga balls, mat holders, and a sanitization station. Ambient music and the signature Ellington Hospitality scent enhance the atmosphere, making every session a rejuvenating experience.

1ST FLOOR AMENITIES PLAN

- 1 LEISURE & LOUNGE POOL
- 2 WADING POOL
- 3 SUN LOUNGERS AREA
- 4 SHOWER DECK
- 5 OUTDOOR LOUNGE
- 6 CLUB LOUNGE
- 7 PHONE BOOTH/CO-WORKING CORNER
- 8 INDOOR KIDS PLAY AREA
- 9 KIDS WASHROOM
- 10 OUTDOOR KIDS PLAY
- 11 KIDS POOL
- 12 KIDS POOL DECK
- 13 FEMALE CHANGE & SAUNA ROOM
- 14 MALE CHANGE & SAUNA ROOM
- 15 FITNESS STUDIO
- 16 MULTI-PURPOSE LAWN
- 17 LIFT LOBBY



1ST FLOOR

THE RESIDENCES





The living room is the epitome of comfort and conviviality, designed to be the perfect gathering spot for family and guests alike. With its opulent design and inviting atmosphere, it beckons for moments of relaxation and connection. Whether it's unwinding with a book, enjoying lively conversations by the views through the floor-to-ceiling windows, or simply basking in the warmth of natural light, this space offers an unparalleled sense of serenity and ease.



LIVING & DINING

The living room effortlessly accommodates every occasion, becoming the heart of the home where cherished memories are made and shared.



Step into the kitchen, a hub of culinary inspiration and warmth. With its open layout and sleek design, it beckons for both casual breakfast chats and gourmet cooking adventures. The grey marble countertops and light wood cabinetry exude modern elegance, while the spacious bar kitchen island offers a perfect spot for gathering and eating.





KITCHENS

The kitchen is more than just a space for preparing meals—it's a place where memories are savored, making it the heart of the home.



The bedroom exudes a harmonious blend of style and serenity, inviting you to unwind from the moment you step inside. Your gaze is immediately drawn to the expansive balcony, a serene retreat that promises moments of tranquility amidst the outdoors.

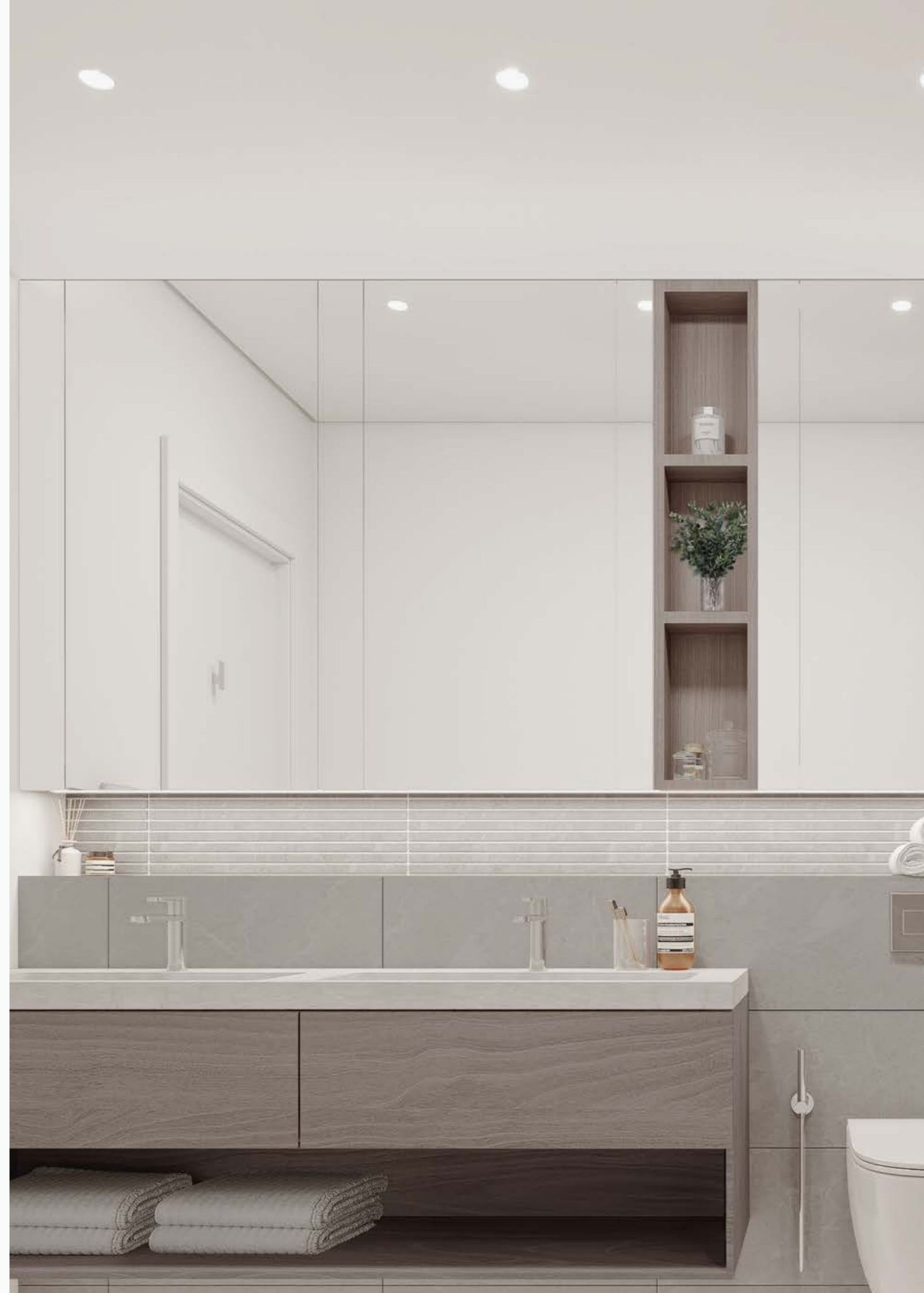


BEDROOMS

The wardrobes stand tall, their sleek design is a testament to meticulous attention to detail. With durable laminated doors and integrated mirrors, they effortlessly combine practicality with sophistication.



In the bathroom, every detail is meticulously curated to create a haven of sophistication and practicality. The high-quality faucets and accessories not only add a touch of elegance but also ensure a seamless experience with every use. Porcelain floor and wall tiles provide a timeless backdrop, while the generous 2.4-meter ceiling height adds to the feeling of spaciousness and comfort. Custom-designed mirror medicine cabinets and under-sink storage, complete with concealed lighting, offer ample space for organization without compromising on style.





BATHROOMS

Glass door partitions with sleek metal framing separate the showers, enhancing the contemporary aesthetic of the room. The premium quartz stone countertops provide a durable and lavish surface for daily grooming rituals.

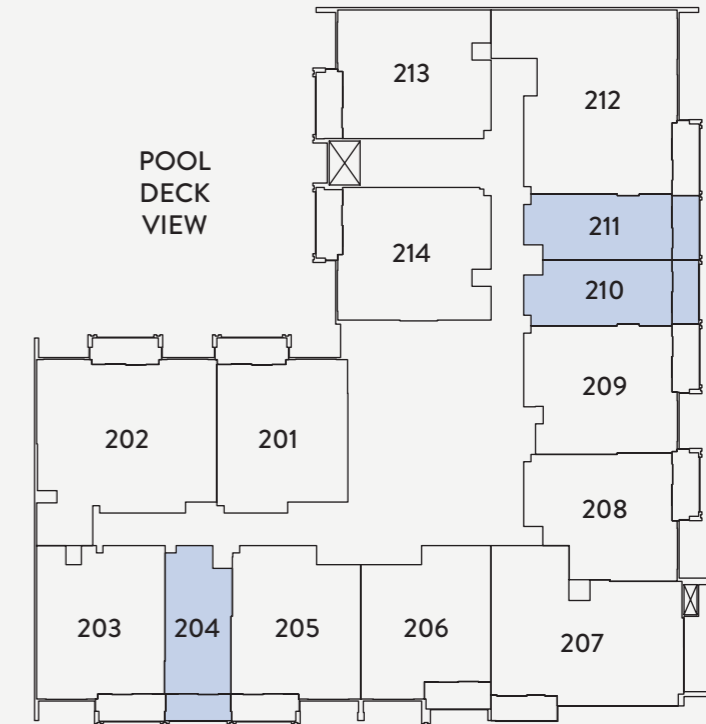
FLOOR PLAN

STUDIO

TYPE A



2ND - 3RD FLOOR



1ST FLOOR

02 09
08

2ND - 3RD FLOOR

04 11
10

4TH - 5TH FLOOR

09
10

INTERNAL LIVING AREA - 381.47 SQ. FT

OUTDOOR LIVING AREA - 70.83 SQ. FT

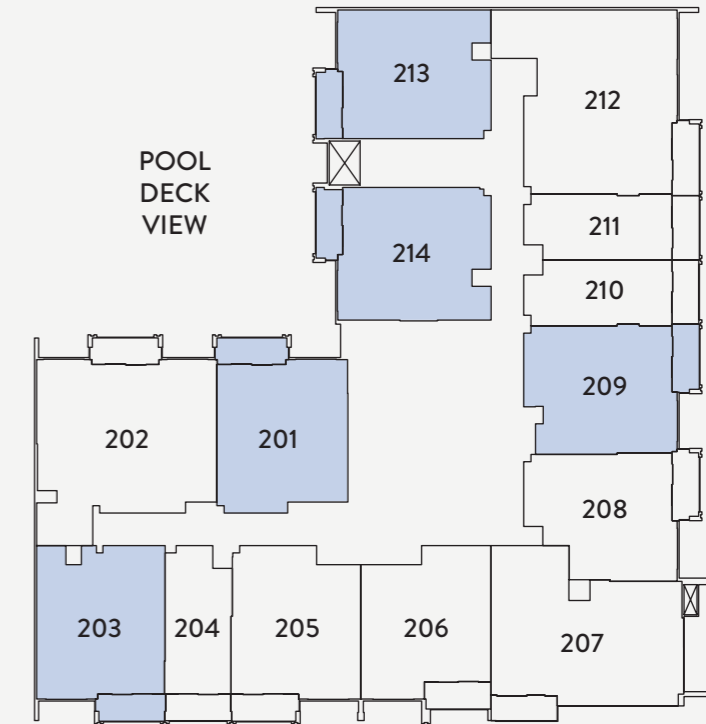
TOTAL LIVING AREA - 452.30 SQ. FT

1 BEDROOM

TYPE A



2ND - 3RD FLOOR



1ST FLOOR

01
07

4TH - 5TH FLOOR

01 12
08 13

9TH - 10TH FLOOR

01 10
07 11

12TH FLOOR

01 10
07 11

2ND - 3RD FLOOR

01 09 14
03 13

6TH - 8TH FLOOR

01 11
08 12

11TH FLOOR

01 10
07 11

INTERNAL LIVING AREA - 755.63 SQ. FT

OUTDOOR LIVING AREA - 73.95 SQ. FT

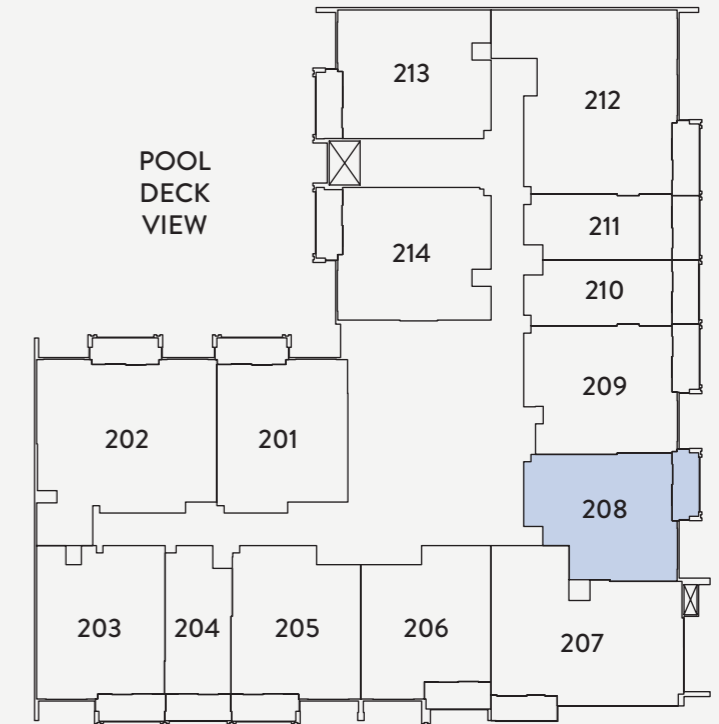
TOTAL LIVING AREA - 829.57 SQ. FT

1 BEDROOM

TYPE B



2ND - 3RD FLOOR



1ST FLOOR

06

2ND - 3RD FLOOR

08

4TH - 5TH FLOOR

07

6TH - 8TH FLOOR

07

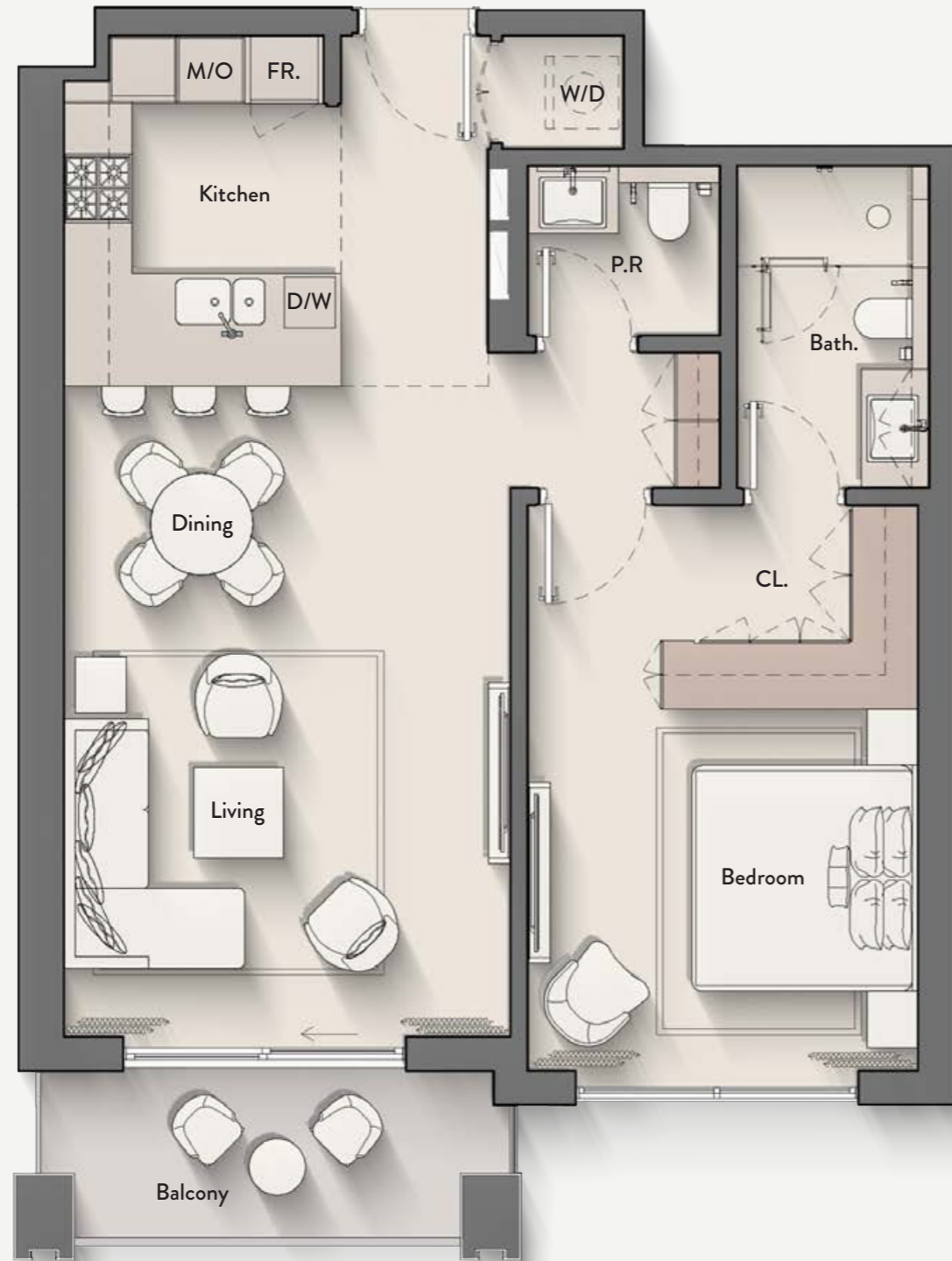
INTERNAL LIVING AREA - 696.32 SQ. FT

OUTDOOR LIVING AREA - 74.38 SQ. FT

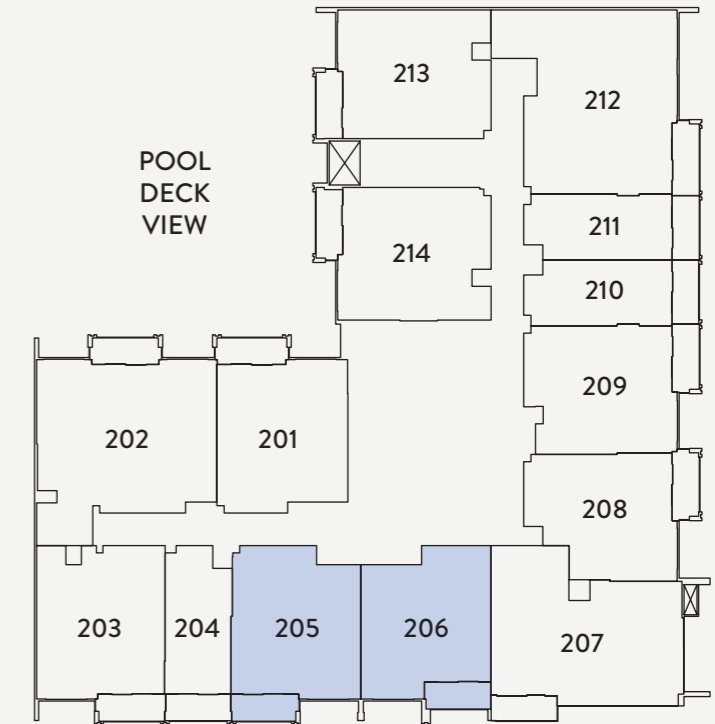
TOTAL LIVING AREA - 770.70 SQ. FT

1 BEDROOM

TYPE C



2ND - 3RD FLOOR



1ST FLOOR

03
04

4TH - 5TH FLOOR

04
05

9TH - 10TH FLOOR

04
05

12TH FLOOR

04
05

2ND - 3RD FLOOR

05
06

6TH - 8TH FLOOR

04
05

11TH FLOOR

04
05

INTERNAL LIVING AREA - 756.06 SQ. FT

OUTDOOR LIVING AREA - 73.63 SQ. FT

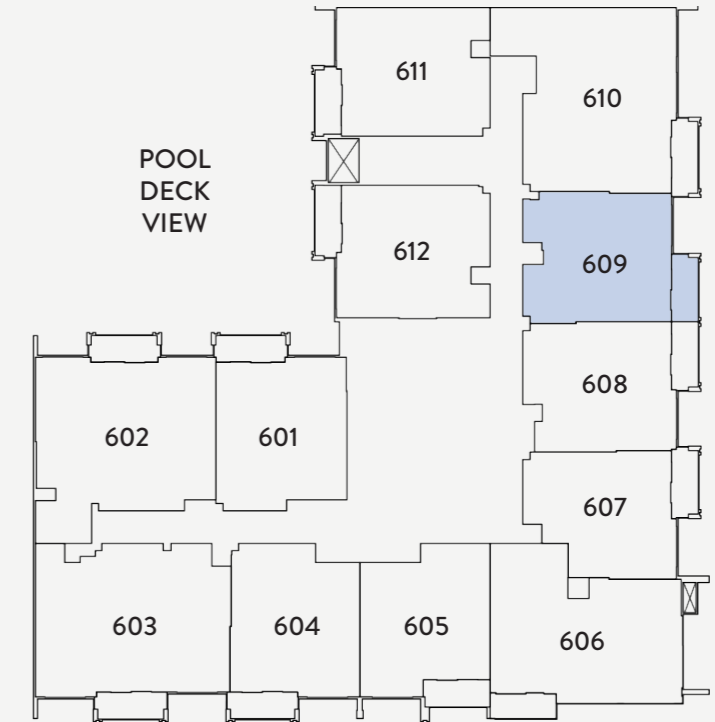
TOTAL LIVING AREA - 829.68 SQ. FT

1 BEDROOM

TYPE D



6TH - 8TH FLOOR



6TH - 8TH FLOOR
09

9TH - 10TH FLOOR
08

11TH FLOOR
08

12TH FLOOR
08

INTERNAL LIVING AREA - 760.47 SQ. FT

OUTDOOR LIVING AREA - 73.19 SQ. FT

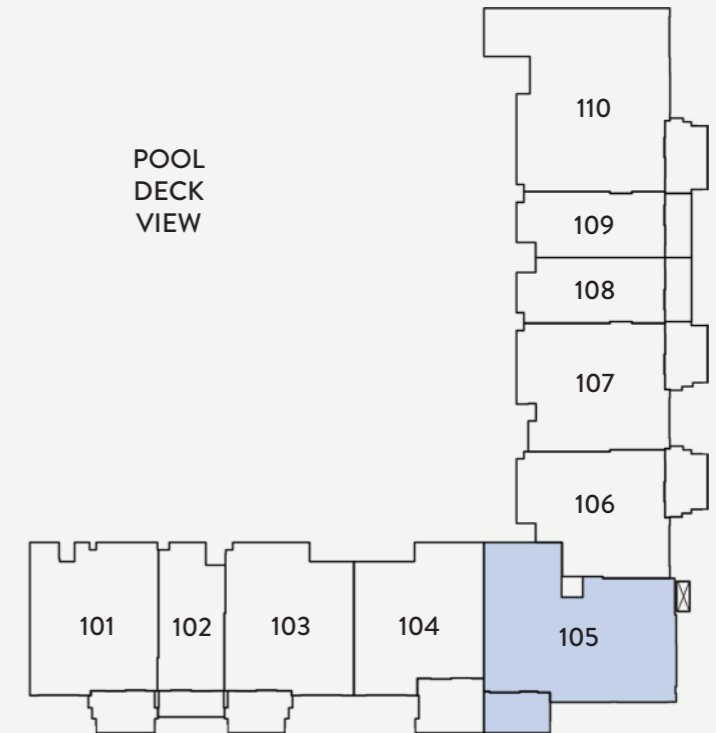
TOTAL LIVING AREA - 833.66 SQ. FT

2 BEDROOM

TYPE A



1ST FLOOR



1ST FLOOR

05

2ND - 3RD FLOOR

07

4TH - 5TH FLOOR

06

6TH - 8TH FLOOR

06

INTERNAL LIVING AREA - 1040.98 SQ. FT

OUTDOOR LIVING AREA - 110.22 SQ. FT

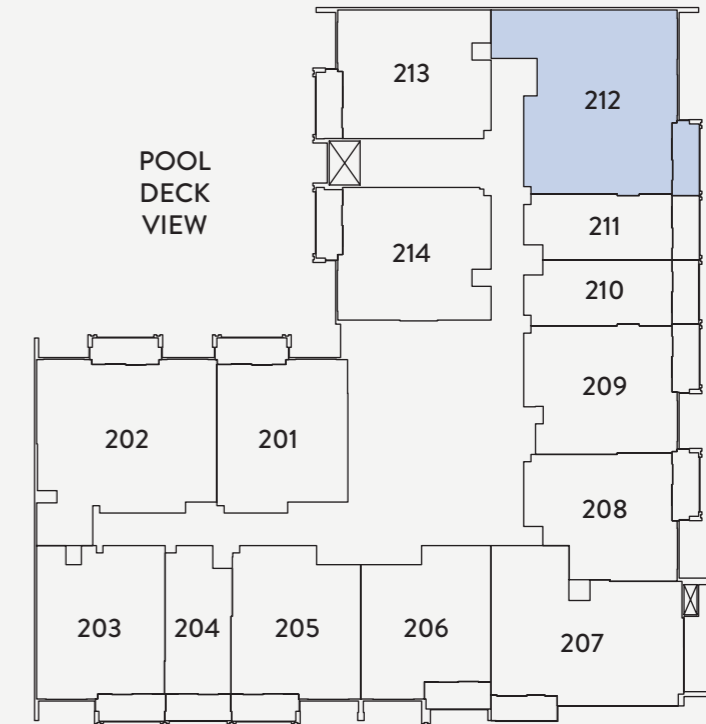
TOTAL LIVING AREA - 1151.20 SQ. FT

2 BEDROOM

TYPE B



2ND - 3RD FLOOR



1ST FLOOR
10

2ND - 3RD FLOOR
12

4TH - 5TH FLOOR
11

6TH - 8TH FLOOR
10

9TH - 10TH FLOOR
09

11TH FLOOR
09

12TH FLOOR
09

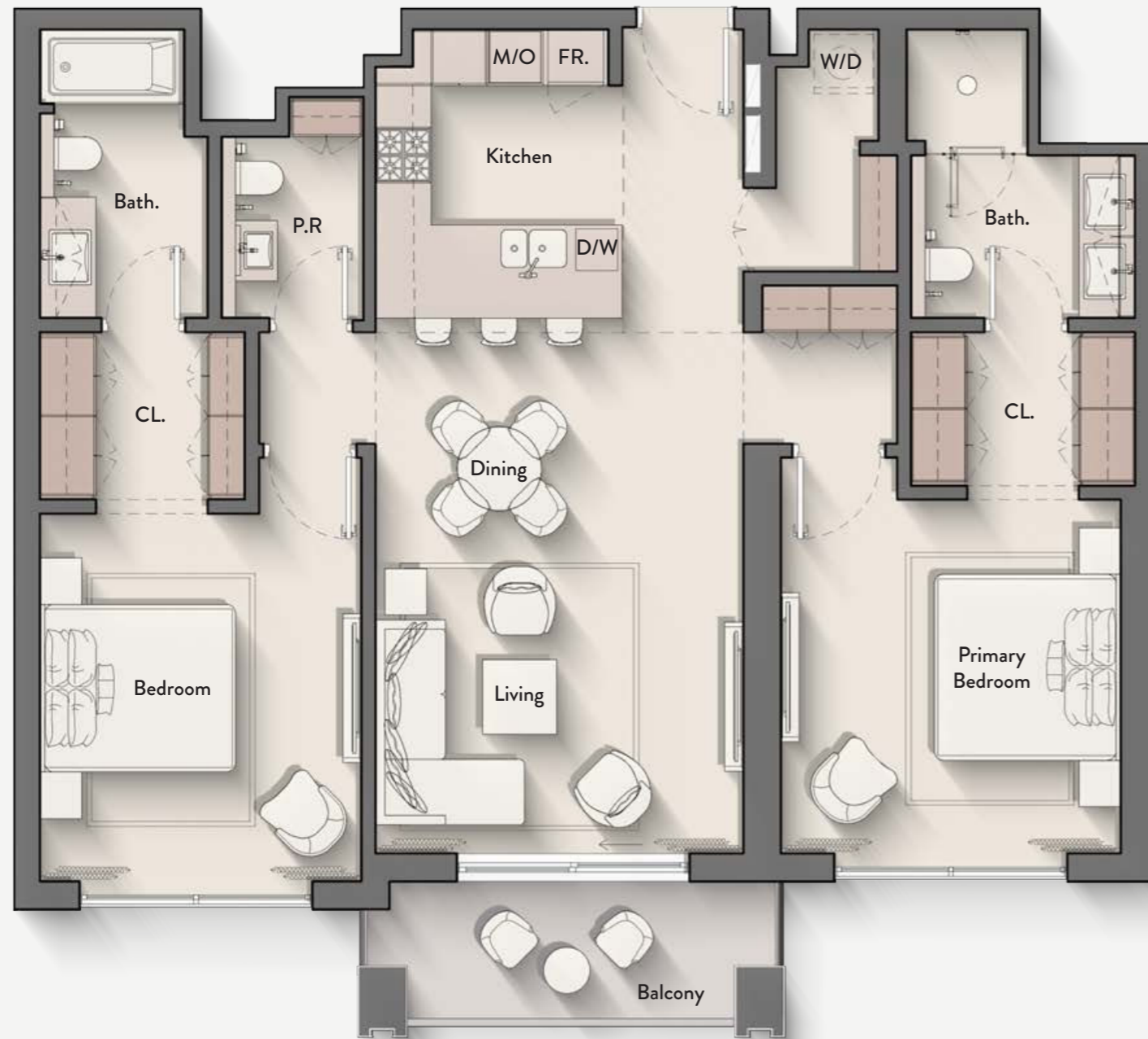
INTERNAL LIVING AREA - 1176.28 SQ. FT

OUTDOOR LIVING AREA - 80.84 SQ. FT

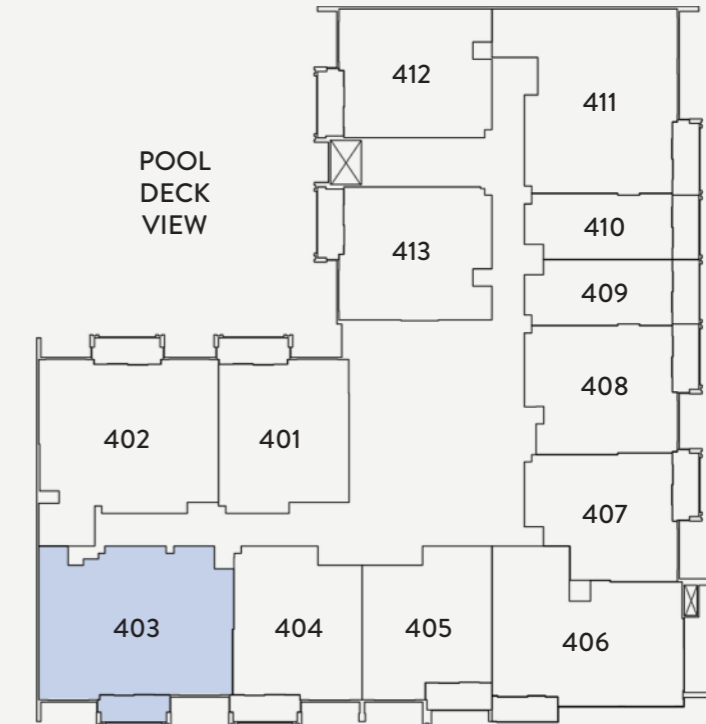
TOTAL LIVING AREA - 1257.12 SQ. FT

2 BEDROOM

TYPE C



4TH - 5TH FLOOR



4TH - 5TH FLOOR
03

6TH - 8TH FLOOR
03

9TH - 10TH FLOOR
03

11TH FLOOR
03

12TH FLOOR
03

INTERNAL LIVING AREA - 1148.83 SQ. FT

OUTDOOR LIVING AREA - 76.85 SQ. FT

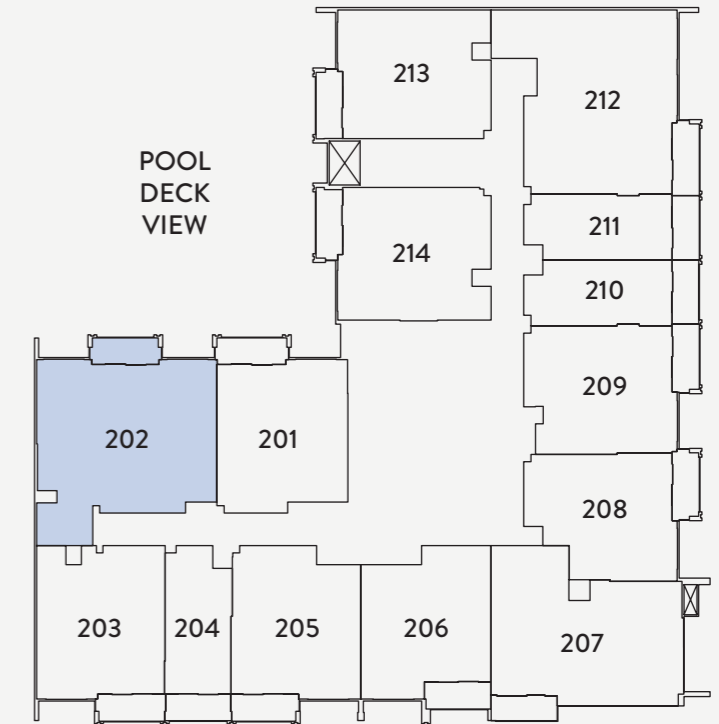
TOTAL LIVING AREA - 1225.69 SQ. FT

2 BEDROOM + S

TYPE A



2ND - 3RD FLOOR



2ND - 3RD FLOOR
02

4TH - 5TH FLOOR
02

6TH - 8TH FLOOR
02

9TH - 10TH FLOOR
02

11TH FLOOR
02

12TH FLOOR
02

INTERNAL LIVING AREA - 1158.09 SQ. FT

OUTDOOR LIVING AREA - 74.38 SQ. FT

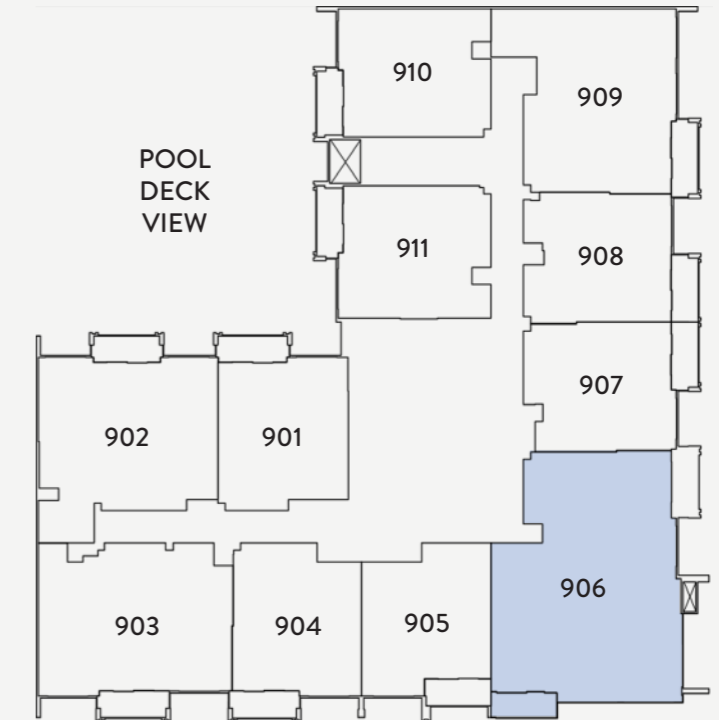
TOTAL LIVING AREA - 1232.47 SQ. FT

3 BEDROOM

TYPE A



9TH - 10TH FLOOR



9TH - 10TH FLOOR

06

INTERNAL LIVING AREA - 1737.94 SQ. FT

OUTDOOR LIVING AREA - 67.38 SQ. FT

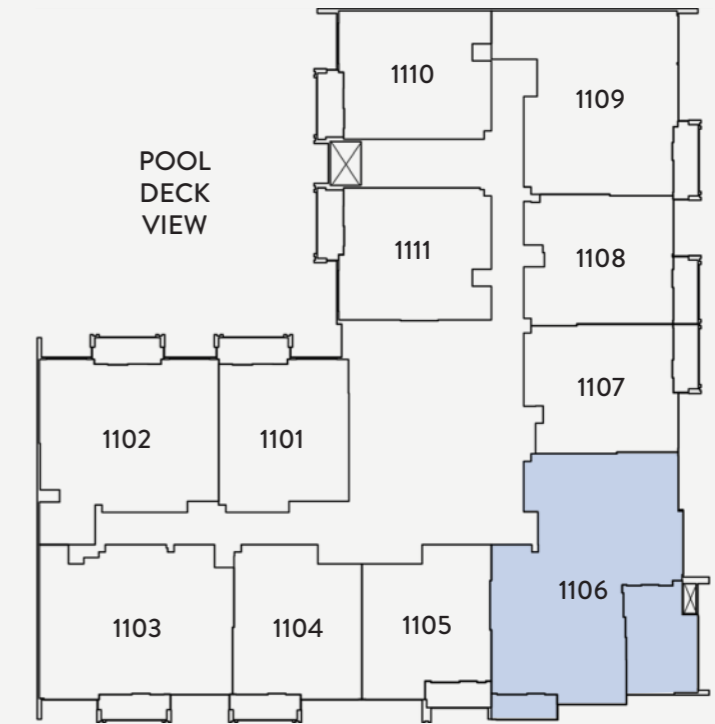
TOTAL LIVING AREA - 1805.32 SQ. FT

3 BEDROOM

TYPE B



11TH FLOOR



11TH FLOOR
06

12TH FLOOR
06

INTERNAL LIVING AREA - 1489.40 SQ. FT

OUTDOOR LIVING AREA - 375.12 SQ. FT

TOTAL LIVING AREA - 1864.52 SQ. FT

