



SAMANA
SKY VIEWS



SAMANA DEVELOPERS, WHERE PURPOSE SHAPES EVERY SPACE

SAMANA's legacy is rooted in a singular vision—to craft environments that elevate everyday life. Over three decades, we've transformed that vision into a portfolio of communities that stand as benchmarks of design, purpose, and aspiration.

From idea to execution, we pursue progress with intention and purpose, fusing innovation, aesthetic clarity, and community thinking into every development. The result is more than architecture. It's a curation of refined lifestyles that inspire, endure, and lead the way forward.



WHERE COMPLETE CONTROL MEETS TIMELESS QUALITY

SAMANA's end-to-end integration means no detail is outsourced, ensuring absolute control over timelines, costs, and uncompromised luxury.

DESIGN & PLANNING

Visionary concepts engineered for reality.

ENGINEERING & CONTRACTING

Structural artistry meets technical brilliance.

PROCUREMENT

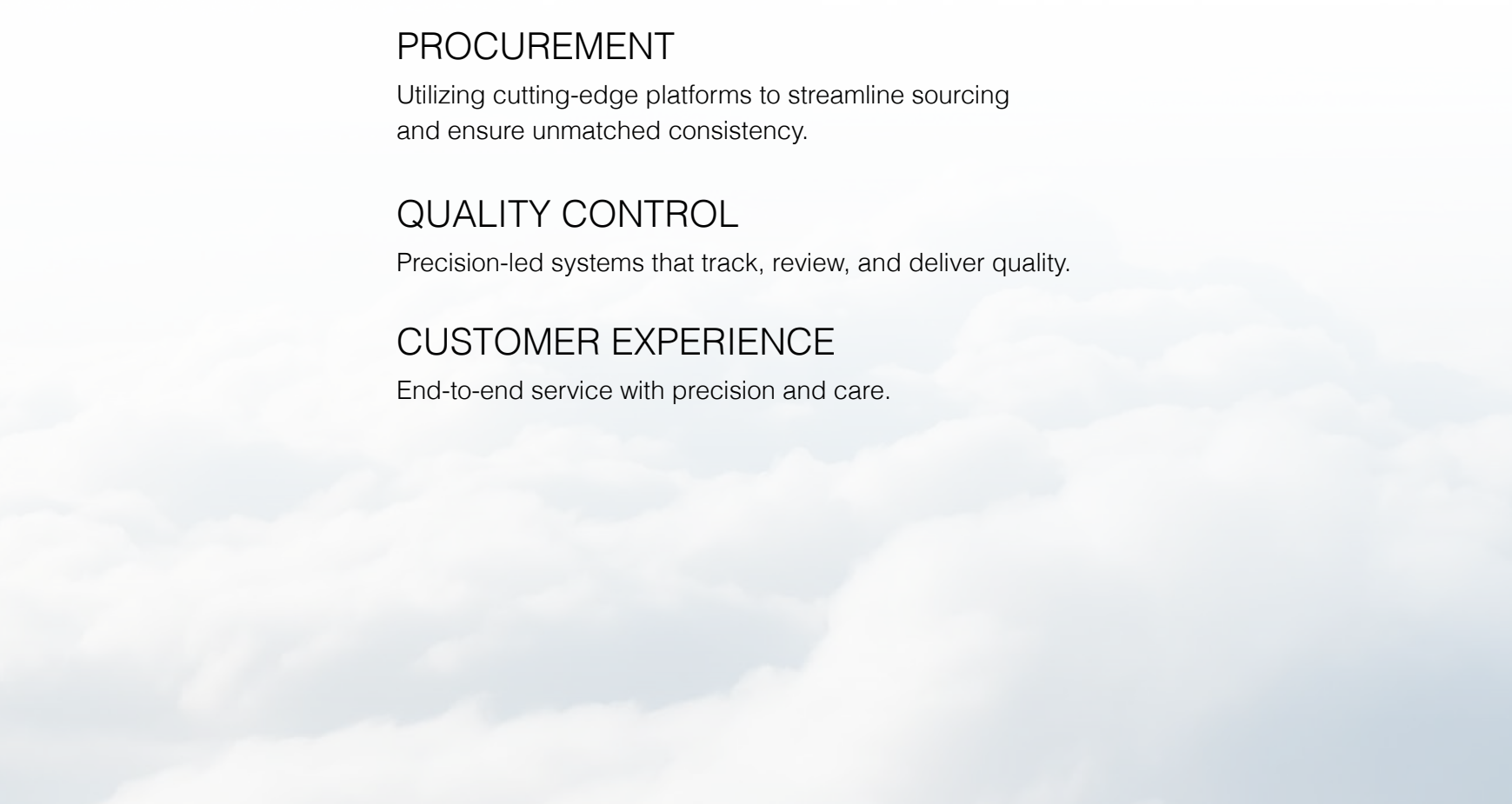
Utilizing cutting-edge platforms to streamline sourcing and ensure unmatched consistency.

QUALITY CONTROL

Precision-led systems that track, review, and deliver quality.

CUSTOMER EXPERIENCE

End-to-end service with precision and care.



WHERE TOMORROW TAKES SHAPE TODAY

Dubai Production City (IMPZ) has emerged as one of Dubai's best-kept secrets – it's redefining what modern living means in the heart of the Emirates.

This is where Dubai's visionary professionals don't just succeed – they flourish. Where ambitious families don't just settle – they build legacies. Where forward-thinking investors don't just see potential, they shape the future of one of the world's most dynamic cities.

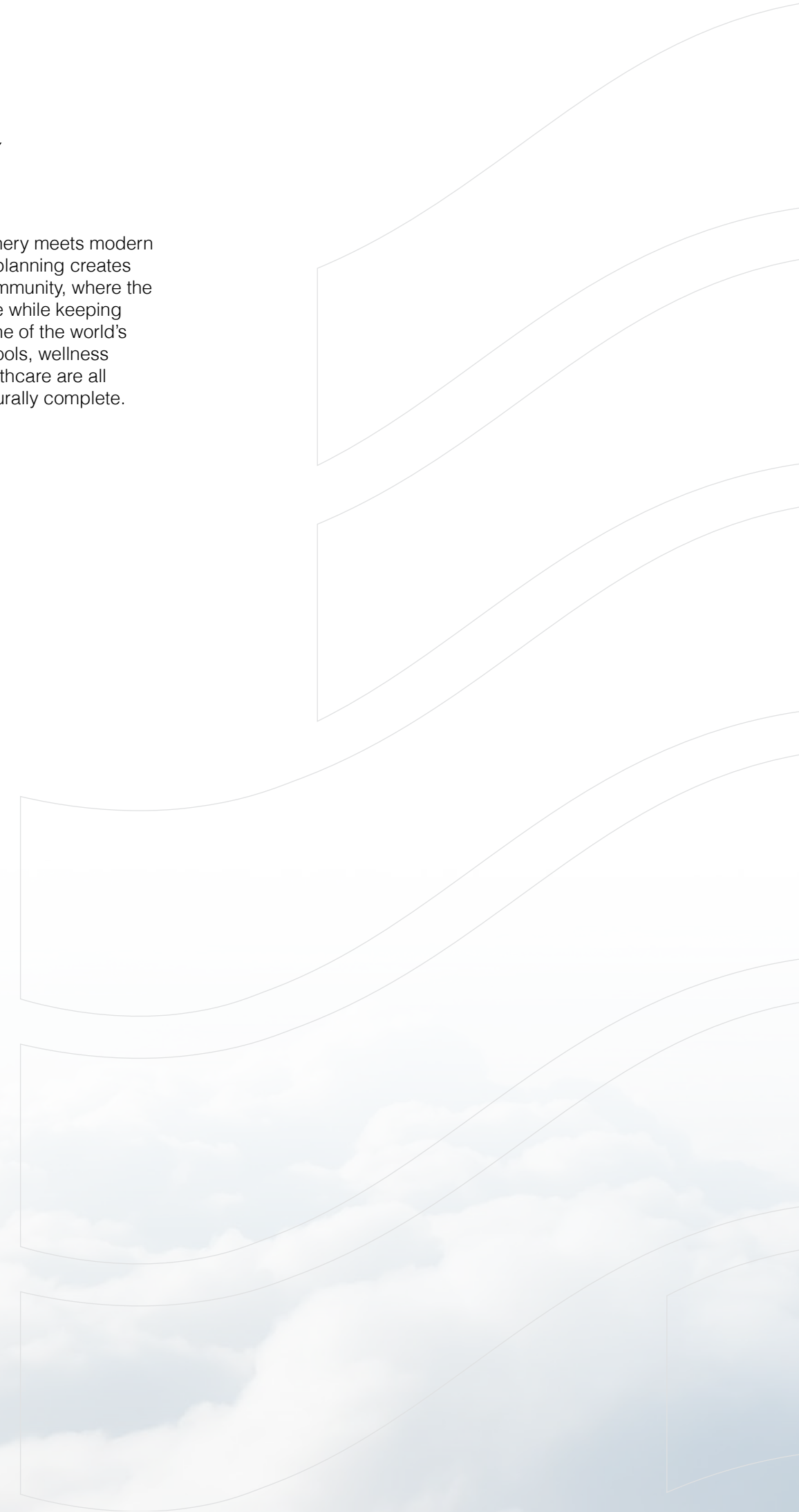
IMPZ is where Dubai's next chapter isn't just being written – it's being lived.





WHERE LIFESTYLE MEETS LIVABILITY

Picture a place where lush greenery meets modern infrastructure, where thoughtful planning creates spaces for both solitude and community, where the pace of life allows you to breathe while keeping you connected to the pulse of one of the world's most dynamic cities. Cafés, schools, wellness centers, supermarkets, and healthcare are all nearby, making life here feel naturally complete.



YOUR ADDRESS IN THE RISING WEST

Set between the dynamic Dubai South and prestigious Jumeirah Golf Estates, and just minutes from Dubai Sports City, IMPZ is at the epicenter of Dubai's western expansion. It's more than a smart location—it's a smart investment in what comes next.





INTRODUCING


SAMANA
SKY VIEWS

Where Serenity Touches The Skyline

Rising majestically from the heart of IMPZ, SAMANA Sky Views stands as the pinnacle of luxurious residential design. Its graceful form is a testament to architectural vision—an iconic structure poised to redefine Dubai's skyline for generations to come.

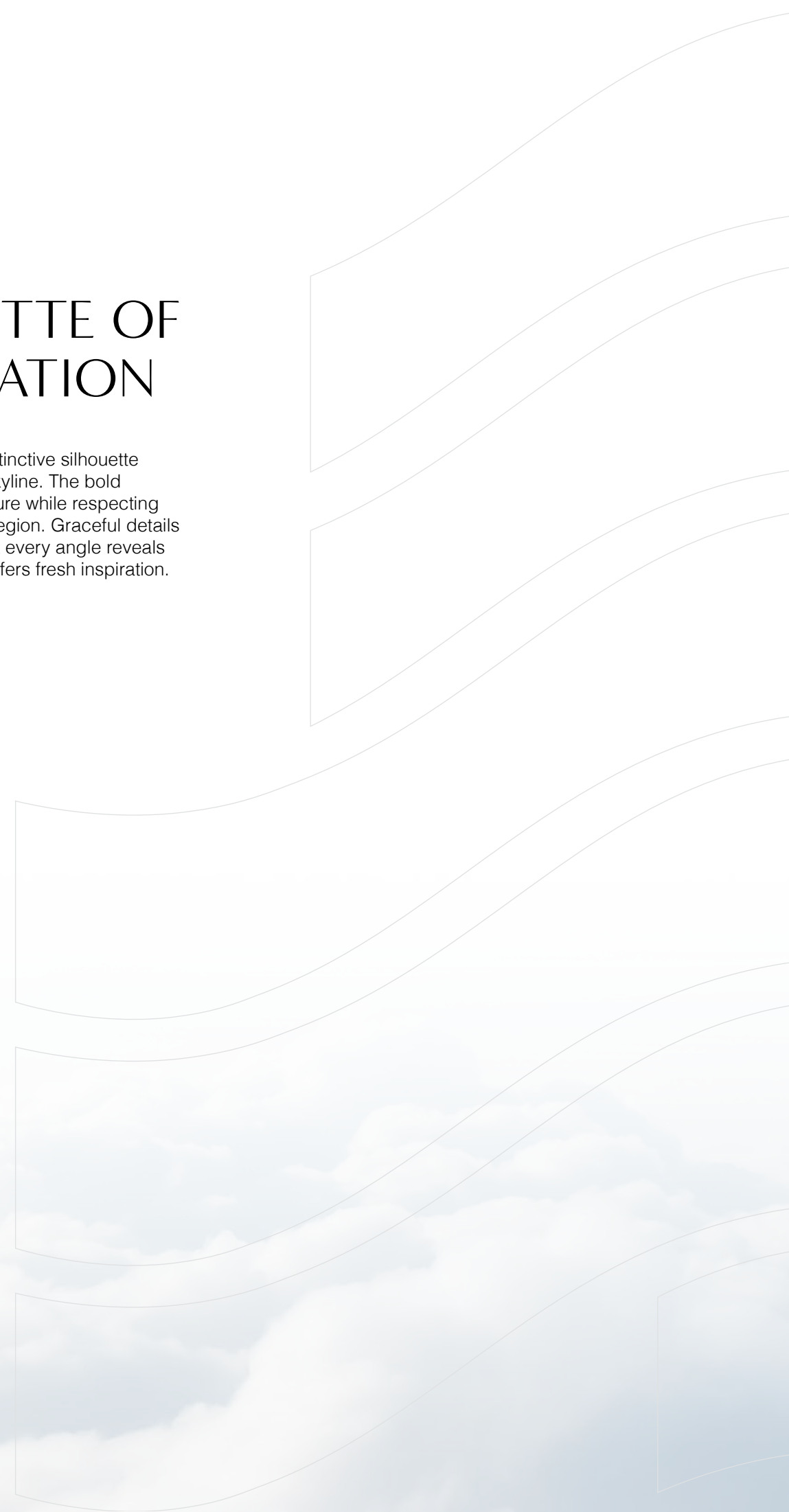
More than just a place to live, SAMANA Sky Views is a destination in itself. Every detail, from sweeping balconies with private pools to resort-inspired amenities and intelligent layouts, is crafted for those who expect more from life—and the view that comes with it.

This is not simply a residence. It's your front-row seat to Dubai's limitless horizon.



A SILHOUETTE OF SOPHISTICATION

SAMANA Sky Views' create a distinctive silhouette against Dubai's ever-changing skyline. The bold modern design speaks to the future while respecting the architectural heritage of the region. Graceful details and crafted elements ensure that every angle reveals new beauty, every perspective offers fresh inspiration.





PRIVATE POOLS, INFINITE POSSIBILITIES

At SAMANA Sky Views, every apartment features its own private pool—your personal sanctuary suspended between earth and sky. This is luxury that adapts to your rhythm: energizing morning laps, contemplative afternoon floats, or evening gatherings that shimmer with possibility. Your private oasis doesn't just complement your lifestyle—it elevates every moment into something memorable.

STEP INTO A LIFE LESS ORDINARY

What makes SAMANA Sky Views truly exceptional isn't just what you see – it's what you feel. The moment you arrive, you understand that this is more than a building; it's a statement of your values, your aspirations, and your commitment to living life at its finest.



REVEL IN REFINED EXCELLENCE

Every inch of SAMANA Sky Views is designed with you in mind—from the sweeping balconies that invite sunrise coffees to the private pools that shimmer beneath the stars. Landscaped podium levels, tranquil water features, and open-air fitness zones turn the space between buildings into places of connection, movement, and leisure.

And the views? They're not just panoramic—they're poetic. Whether it's the city's glow at dusk or serene green expanses by day, your windows become living portraits of Dubai's ever-evolving beauty.



SPACES THAT ADAPT TO YOUR LIFE

Step beyond the threshold and discover interiors that whisper luxury in every detail – spaces that feel intimately yours yet possess a timeless elegance that transcends trends. Each residence is more than a home; it's a personal sanctuary intelligently designed to optimize space, light, and flow.





SAMANA

RECEPTION







BATHROOM

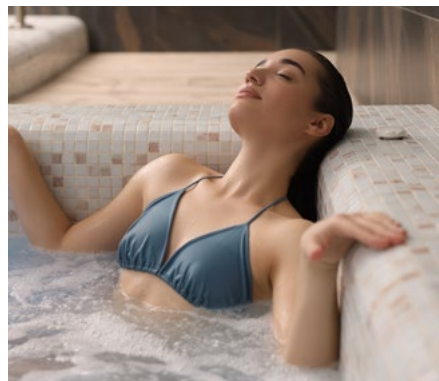





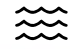


CURATED FOR YOUR EVERY DESIRE

This is where life's finest moments unfold effortlessly, and every indulgence is thoughtfully designed to elevate your daily rhythm. Start your day with sunrise yoga, while the kids explore the play areas, enjoy a refreshing swim, then come together for movie nights or barbecues under the stars. This isn't just a collection of amenities—it's a carefully curated lifestyle where every facility serves a purpose, every space tells a story, and every moment has the potential to become a cherished memory.

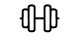







AMENITIES



Aquatic Sanctuaries

-  Outdoor swimming pool
-  Leisure water lounge
-  Kids pool
-  Jacuzzi

Wellness, Elevated

-  State-of-the-Art Gym
-  Open-air gym
-  Meditation Nest
-  Hot yoga deck
-  Pilates studio
-  Dance / Zumba studio
-  Steam/sauna
-  Walking/Jogging track



POOL










AMENITIES




Leisure, Perfected


 Multipurpose hall


 BBQ Area

 Outdoor party area

 Outdoor cinema

 Sunken seating

 Clubhouse & Arcade

 Zen / swing garden

Mini Adventures

 Kids pool

 Outdoor Kids play area

 Kids day care





DO MORE
OFF
WHAT
MAKES
YOU
HAPPY



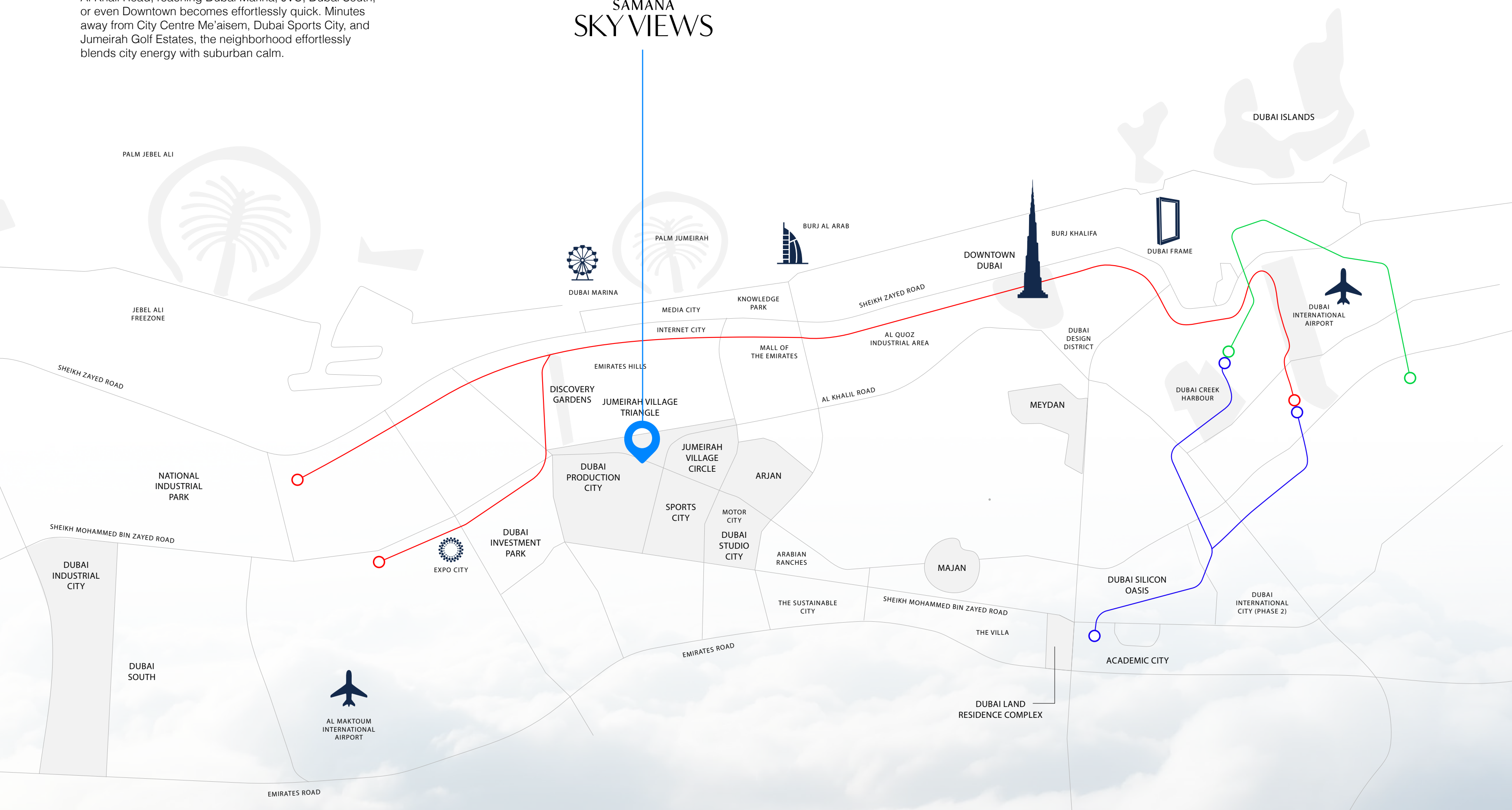
DECATHLON 730 PONGRI



YOUR GATEWAY TO DUBAI'S BEST

Live moments away from everywhere that matters. With direct access to Sheikh Mohammed Bin Zayed Road and Al Khail Road, reaching Dubai Marina, JVC, Dubai South, or even Downtown becomes effortlessly quick. Minutes away from City Centre Me'aisem, Dubai Sports City, and Jumeirah Golf Estates, the neighborhood effortlessly blends city energy with suburban calm.

SAMANA SKY VIEWS





WELL-CONNECTED. WELL-CENTERED.

15 To 20 Mins

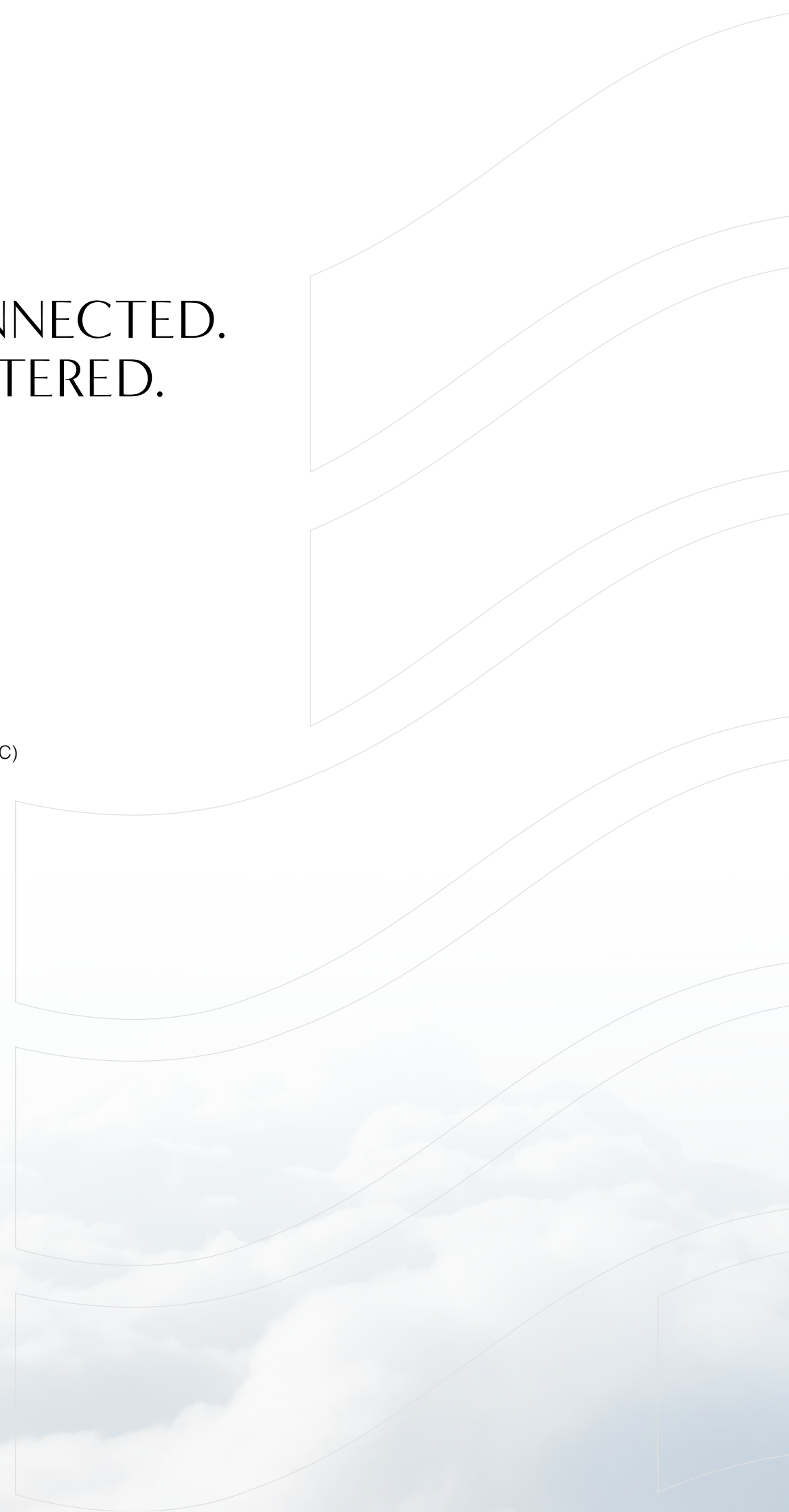
- 15 Min - Palm Jumeirah
- 15 Min - Dubai Marina
- 15 Min - Burj Al Arab
- 15 Min - Mall of the Emirates

20 To 25 Mins

- 23 Min - Downtown Dubai
- 25 Min - Burj Khalifa
- 23 Min - Dubai Mall
- 25 Min - Al Maktoum Airport (DWC)

25 To 30 Mins

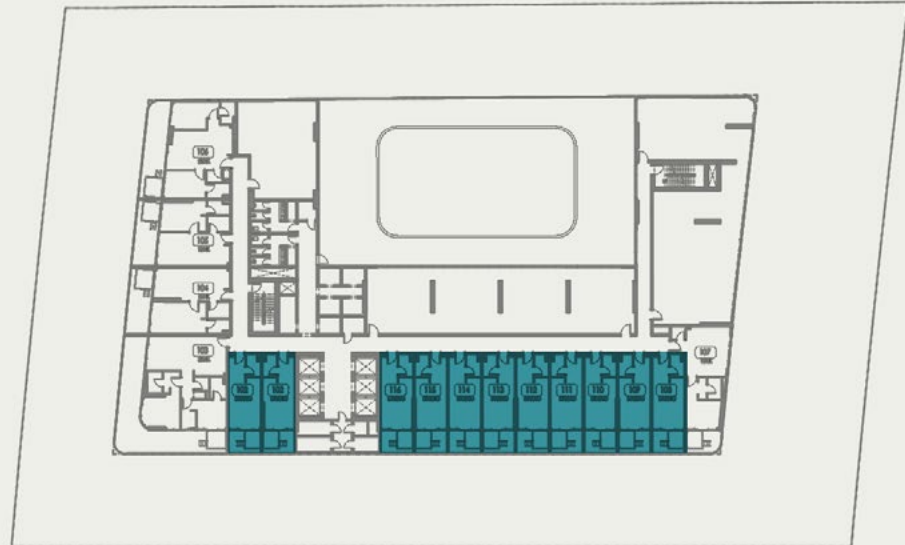
- 26 Min - Dubai Airport





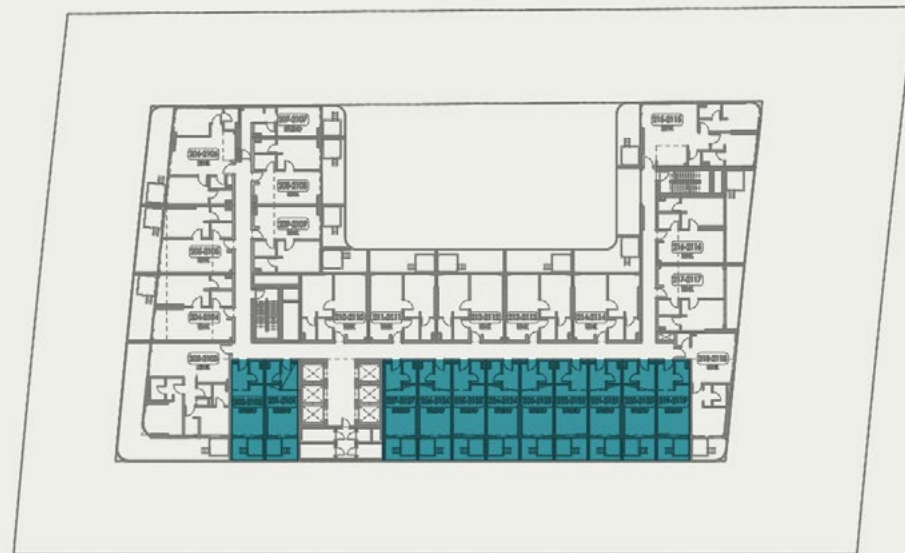
UNIT PLANS

STUDIO TYPE - 1



1ST FLOOR KEYPLAN

UNITS - 101, 102, 108, 109, 110, 111, 112, 113, 114, 115, 116

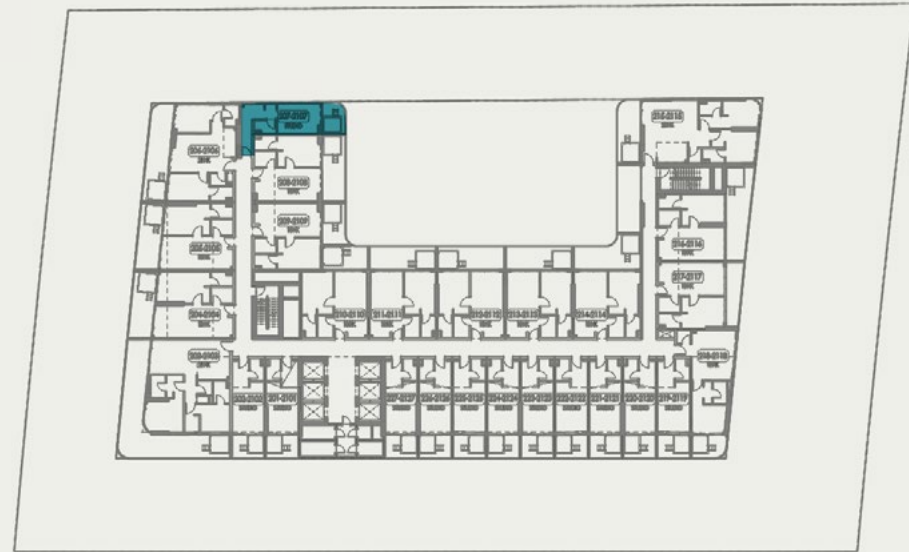


2ND TO 21ST FLOOR KEYPLAN

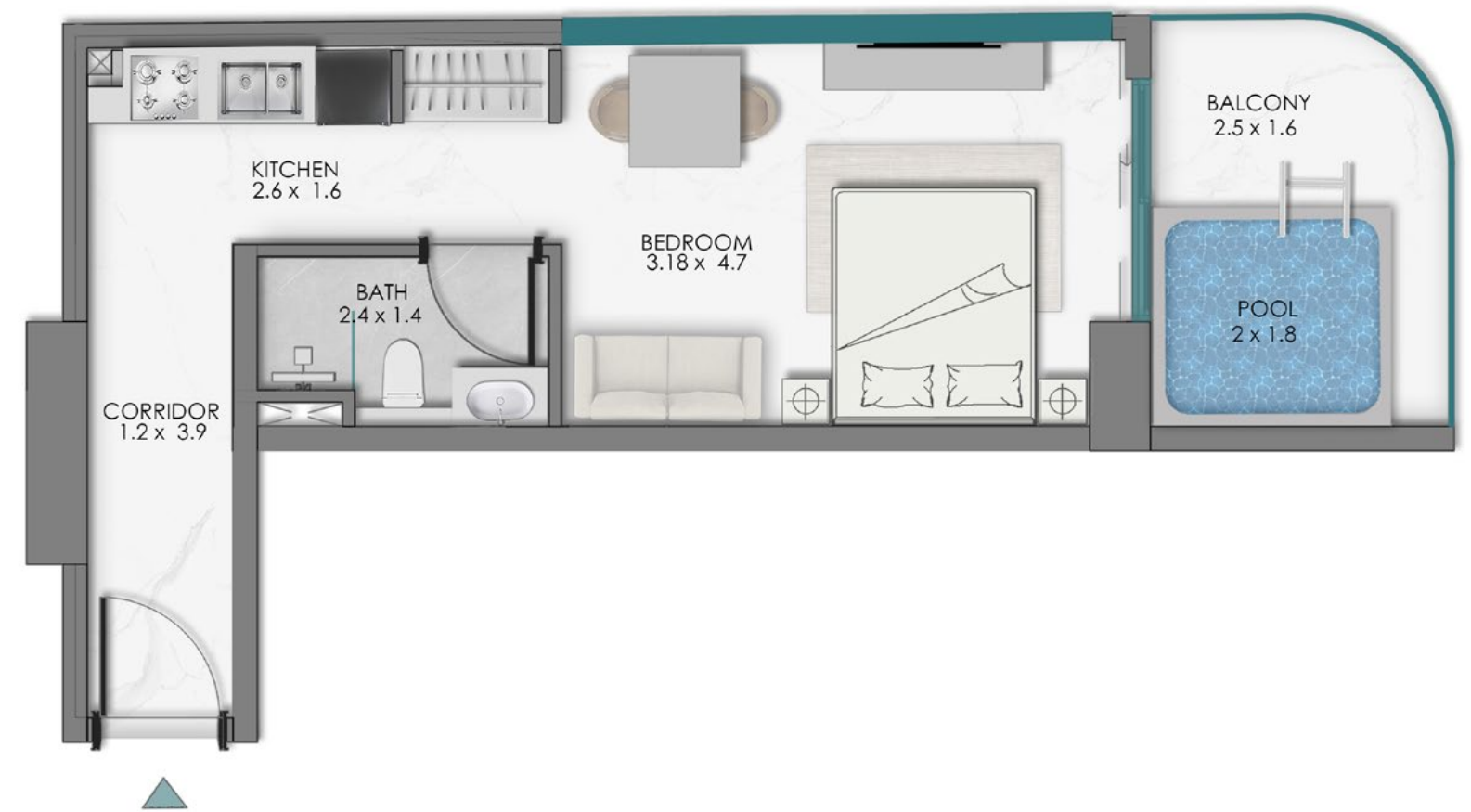
UNITS - 201-2101, 202-2102, 219-2119, 220-2120, 221-2121, 222-2122, 223-2123, 224-2124, 225-2125, 226-2126, 227-2127



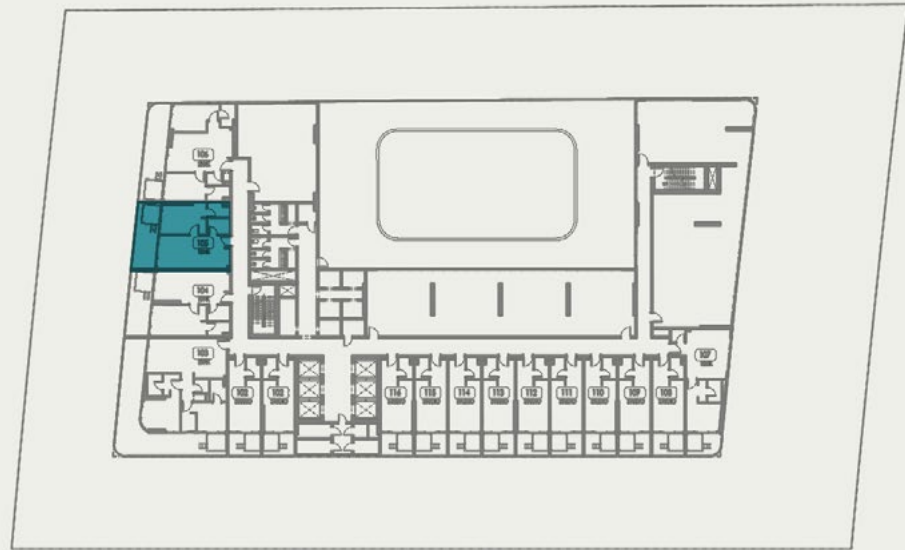
STUDIO TYPE – 2



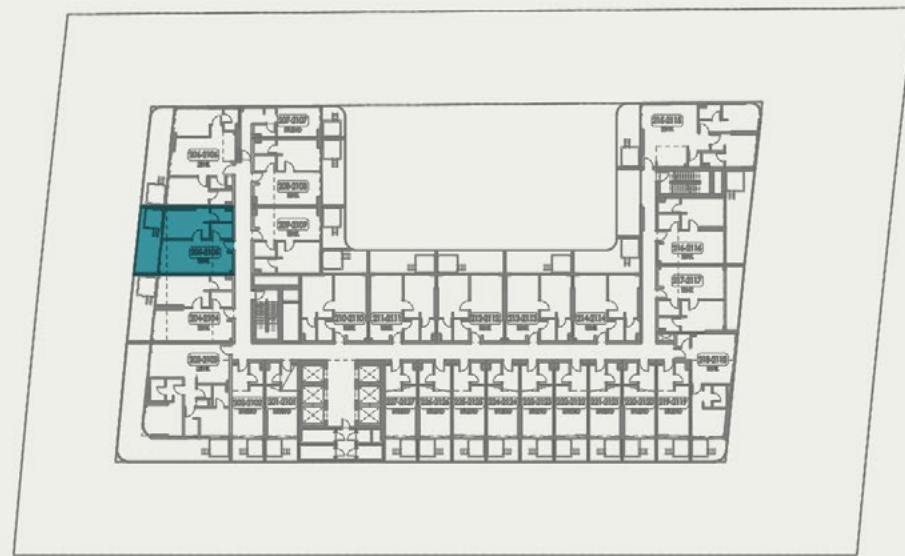
2ND TO 21ST FLOOR KEYPLAN
UNITS - 207-2107



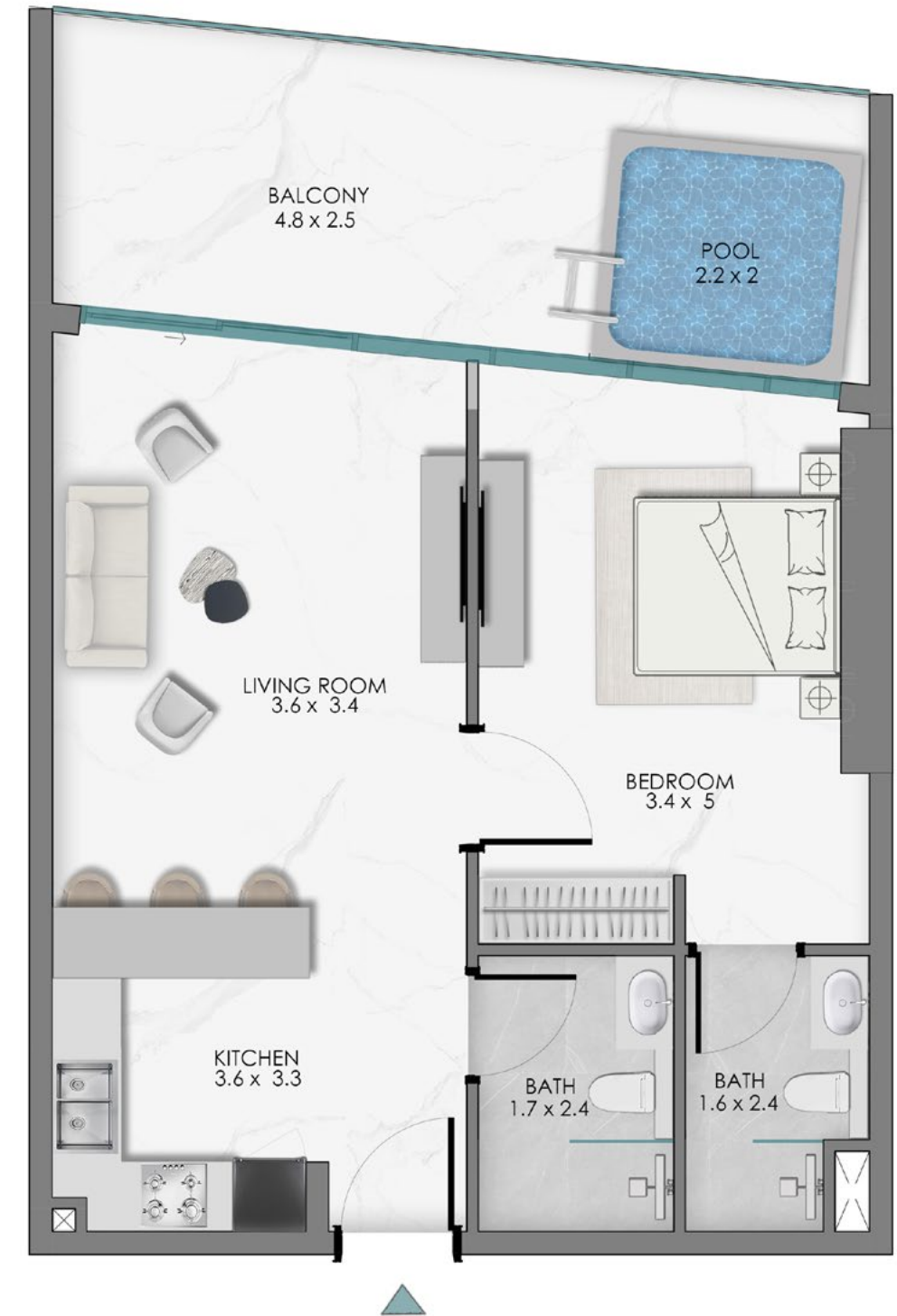
1 BEDROOM TYPE - 1



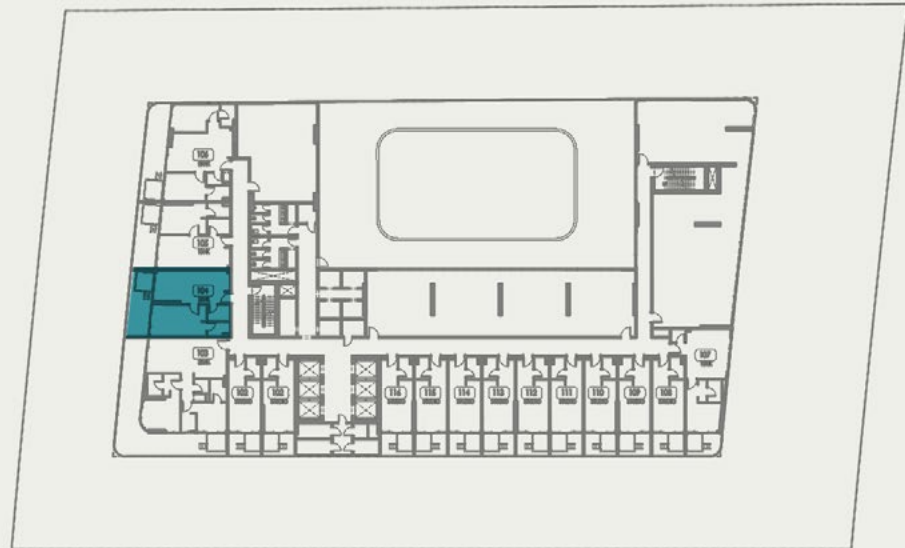
1ST FLOOR KEYPLAN
UNITS - 105



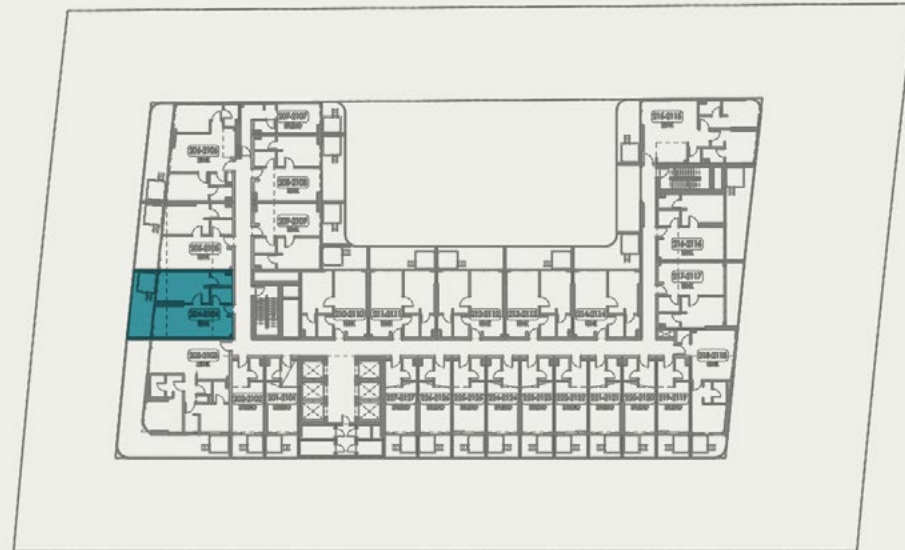
2ND TO 21ST FLOOR KEYPLAN
UNITS - 205-2105



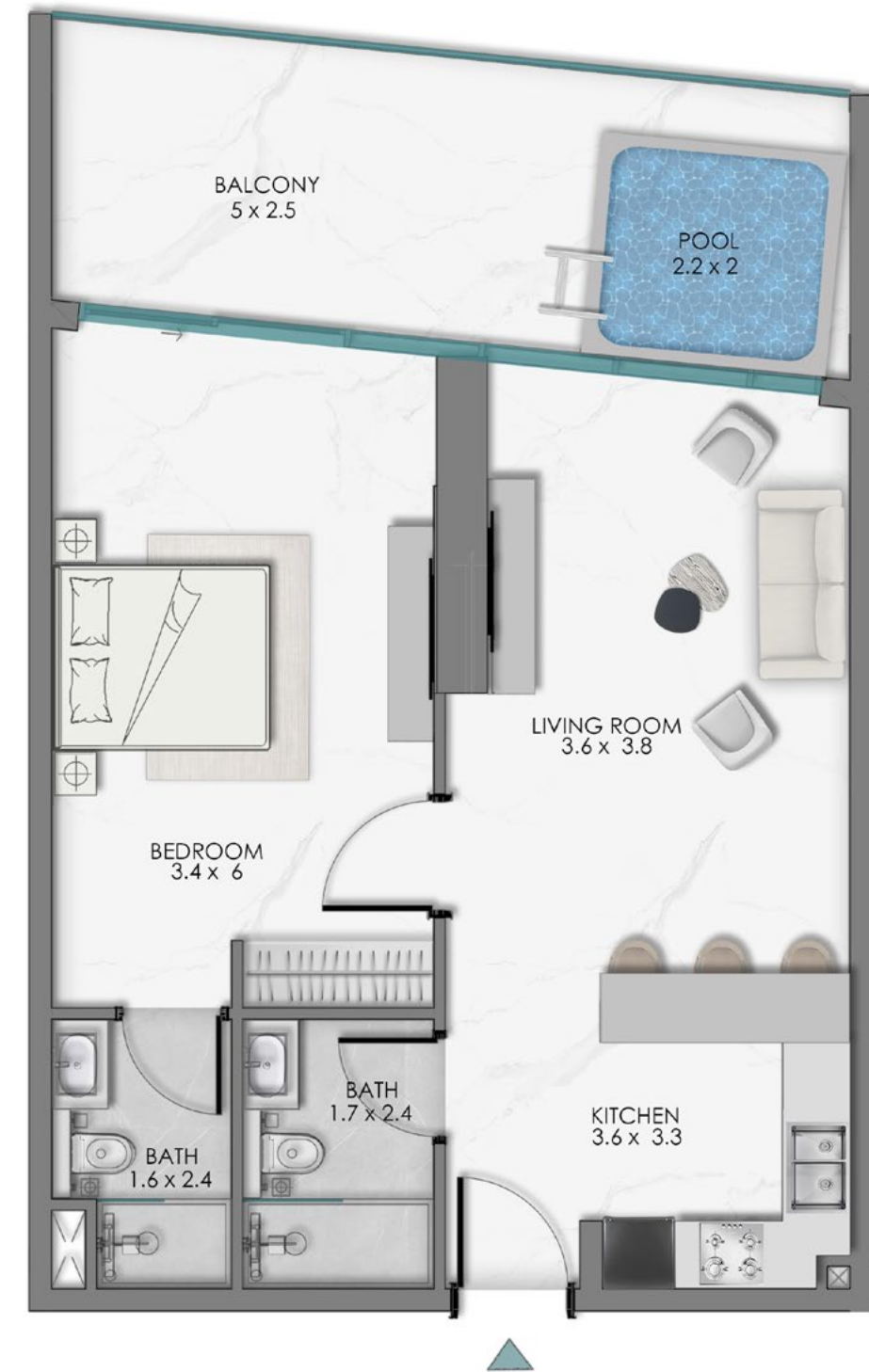
1 BEDROOM TYPE – 2



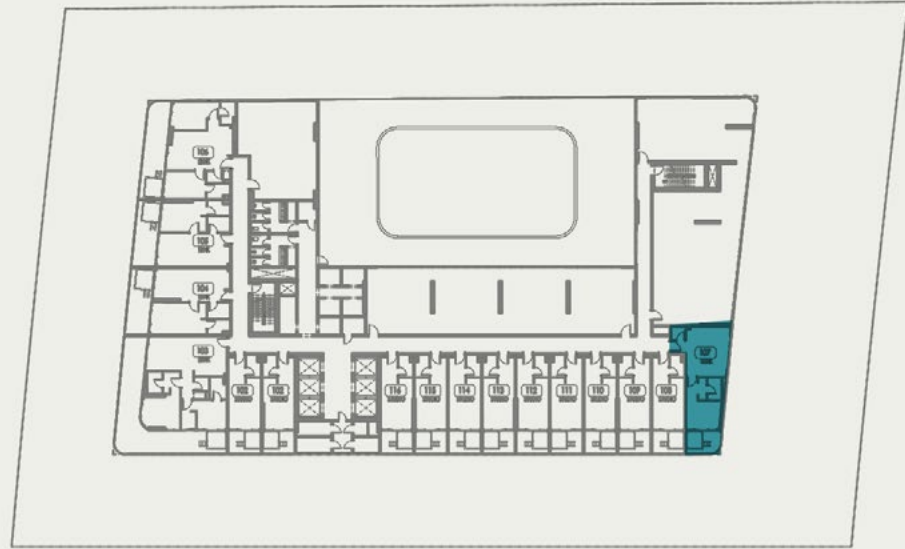
1ST FLOOR KEYPLAN
UNITS - 104



2ND TO 21ST FLOOR KEYPLAN
UNITS - 204-2104



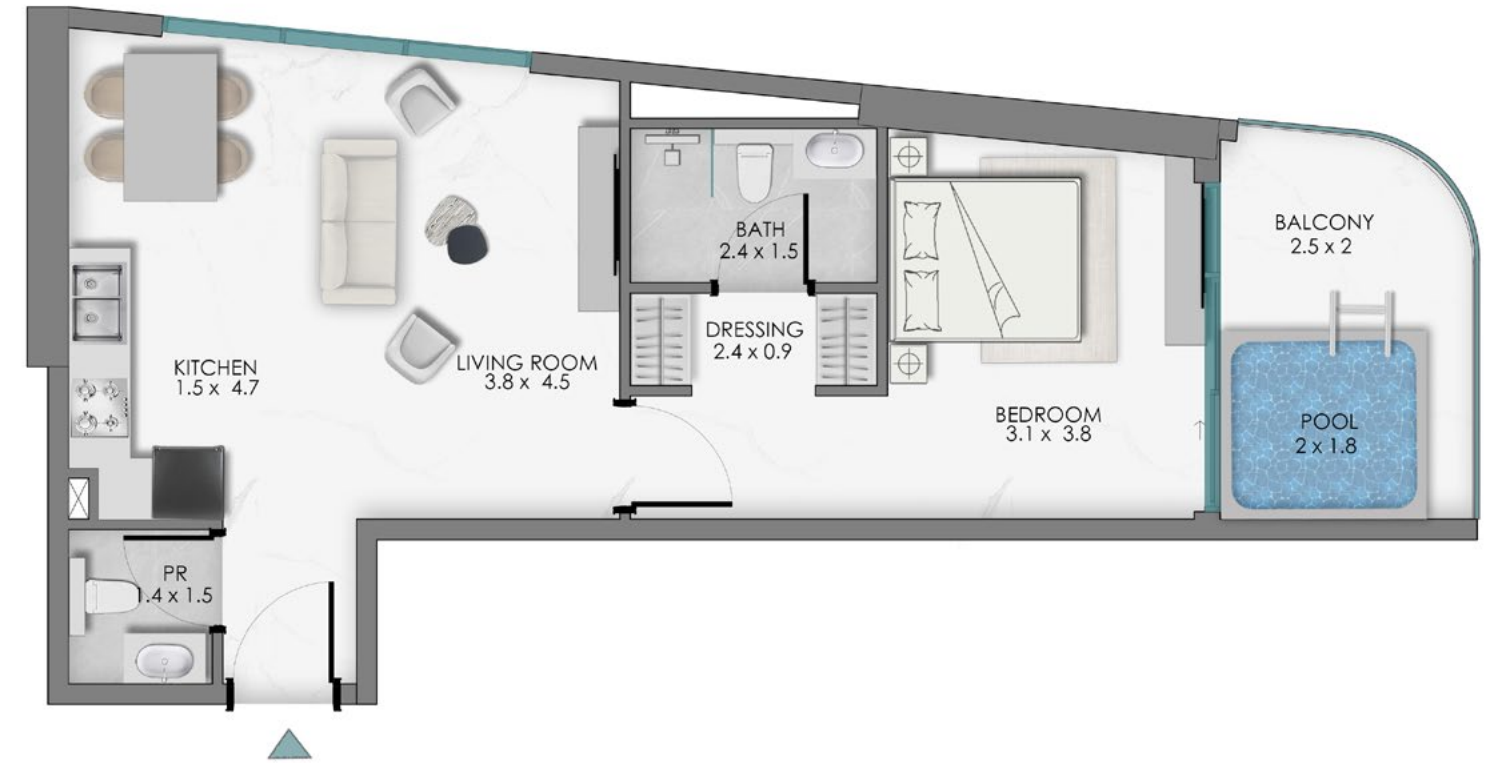
1 BEDROOM TYPE – 3



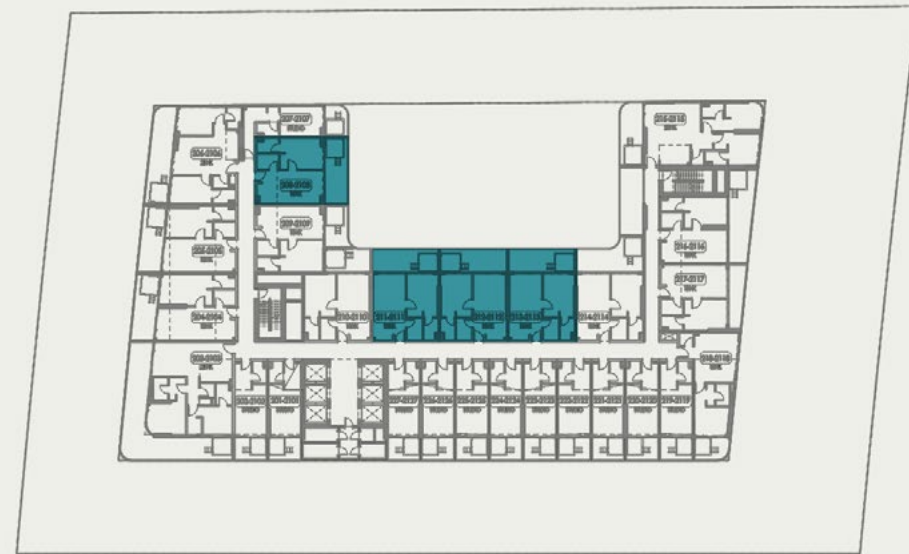
1ST FLOOR KEYPLAN
UNITS - 107



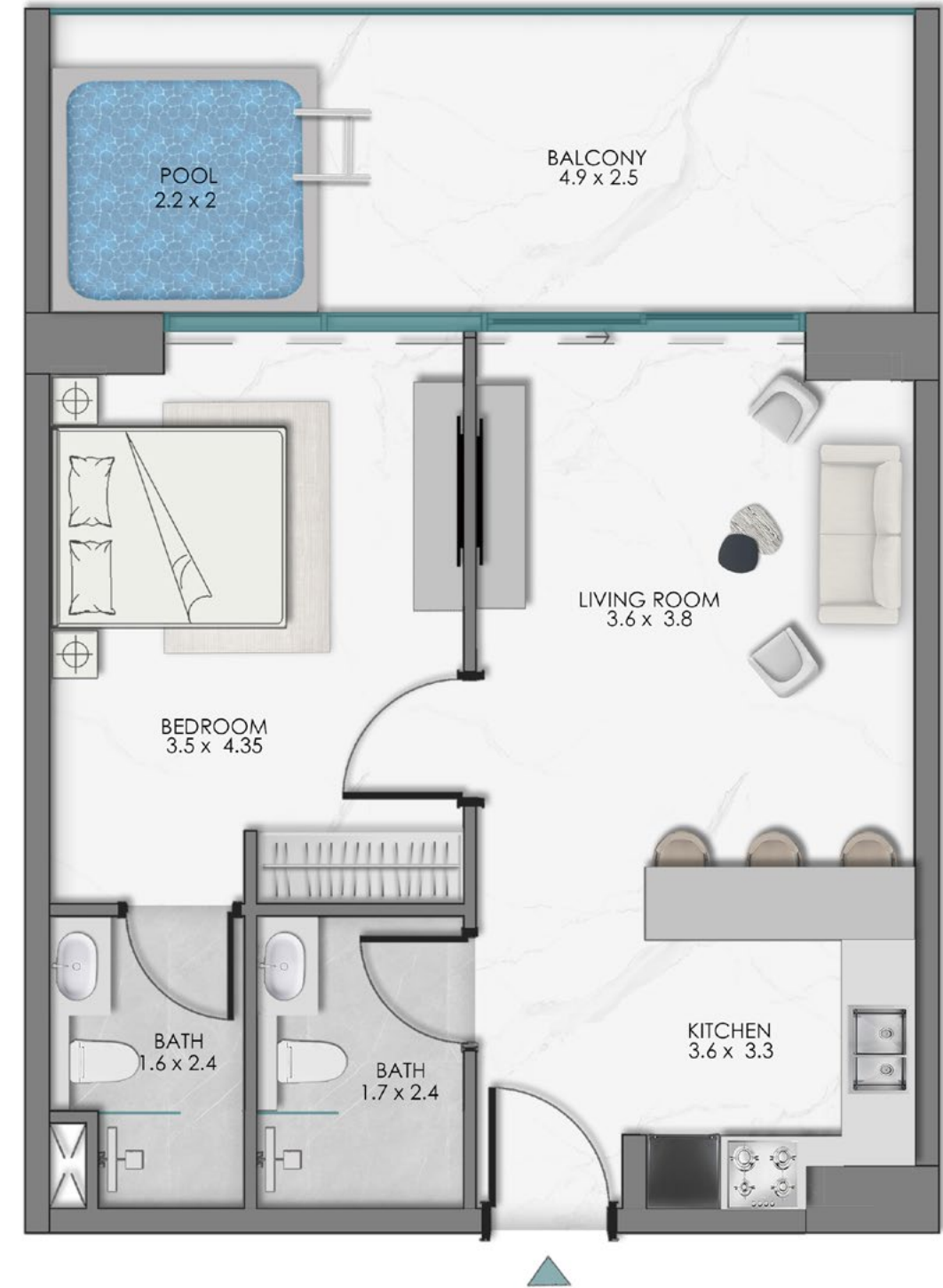
2ND TO 21ST FLOOR KEYPLAN
UNITS - 218-2118



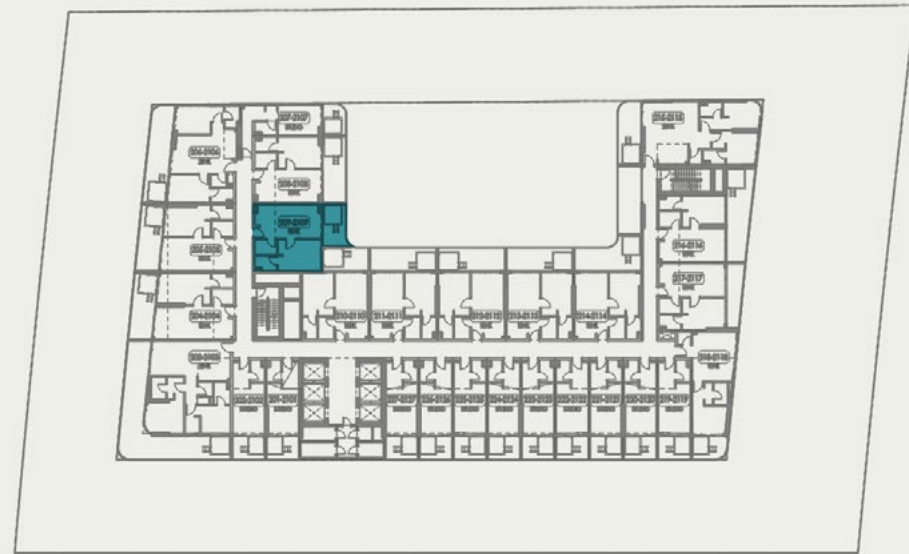
1 BEDROOM TYPE – 4



2ND TO 21ST FLOOR KEYPLAN
UNITS - 208-2108, 211-2111, 212-2112, 213-2113



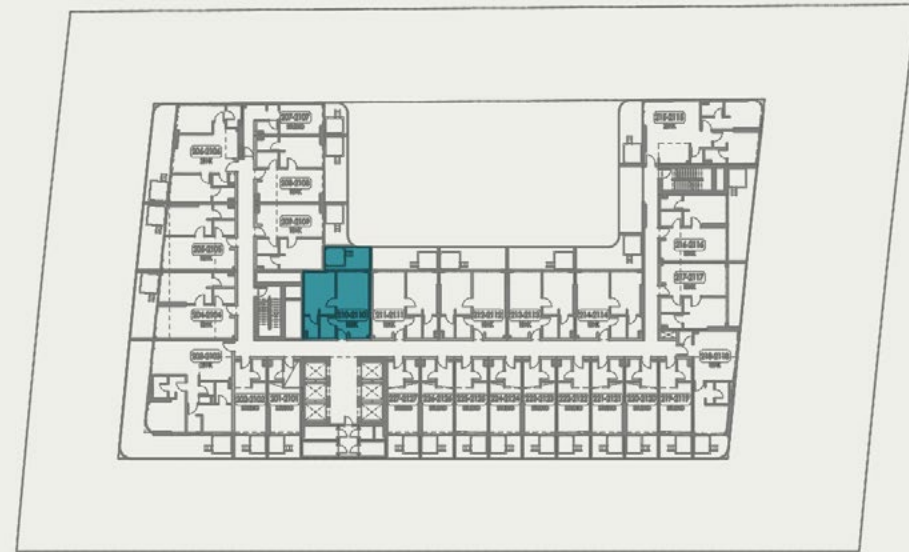
1 BEDROOM TYPE – 5



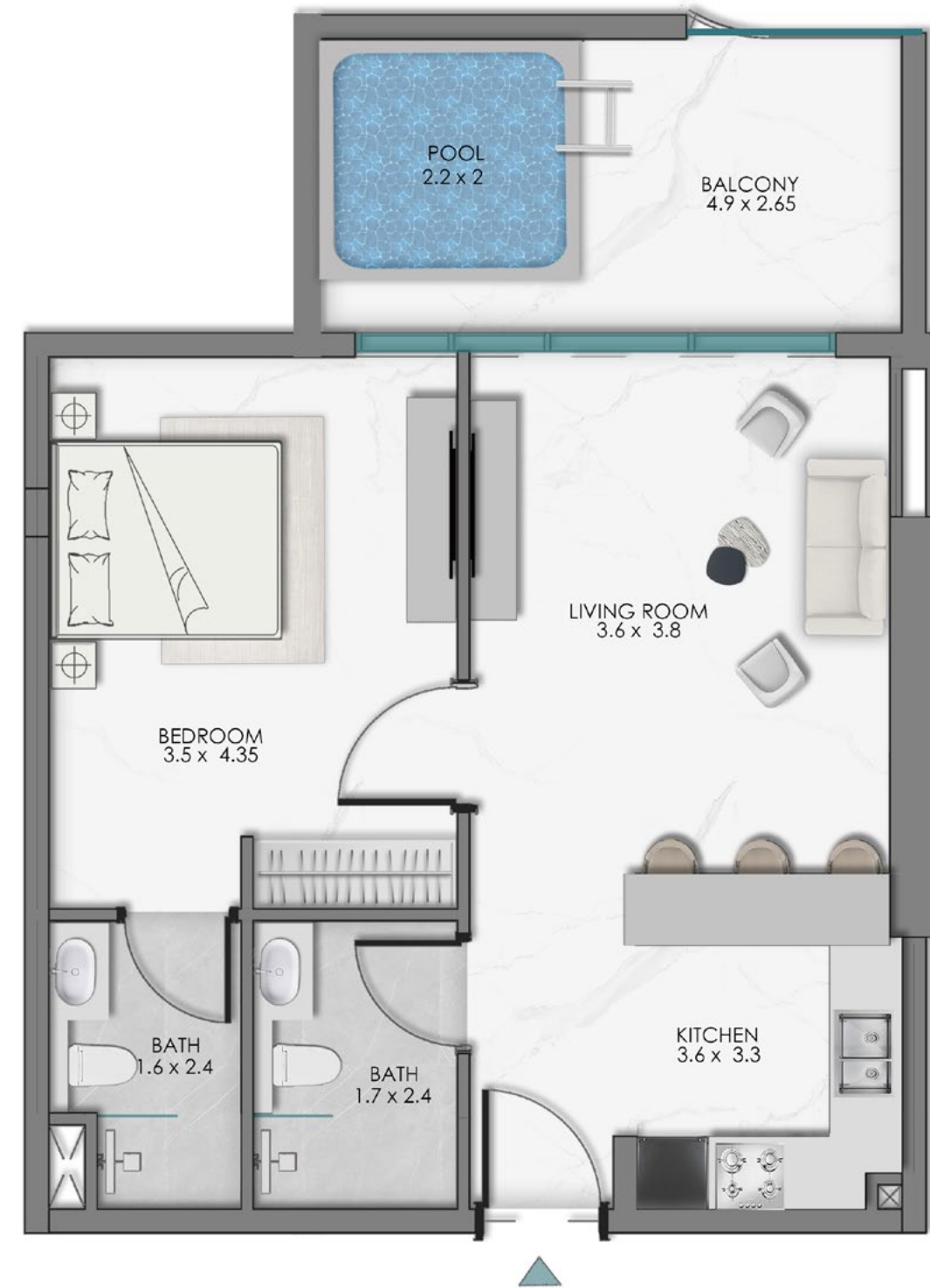
2ND TO 21ST FLOOR KEYPLAN
UNITS - 209-2109



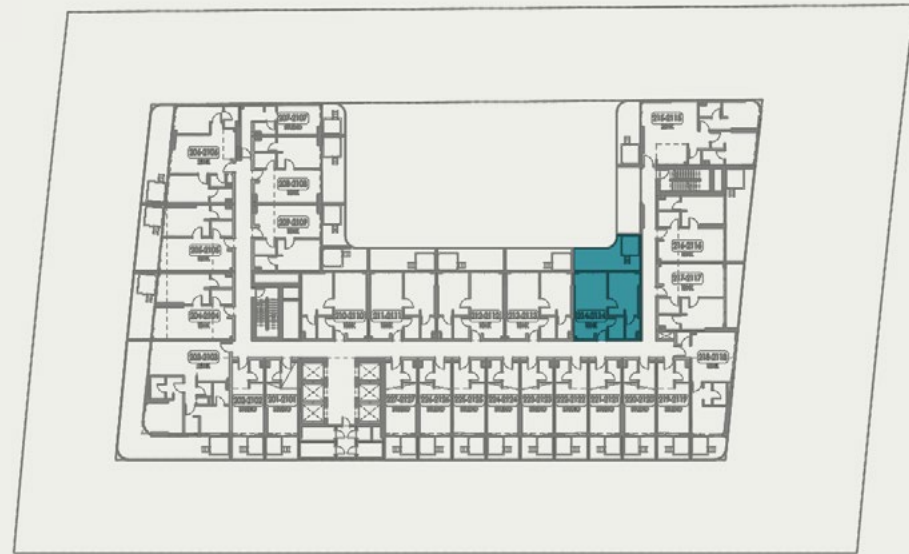
1 BEDROOM TYPE – 6



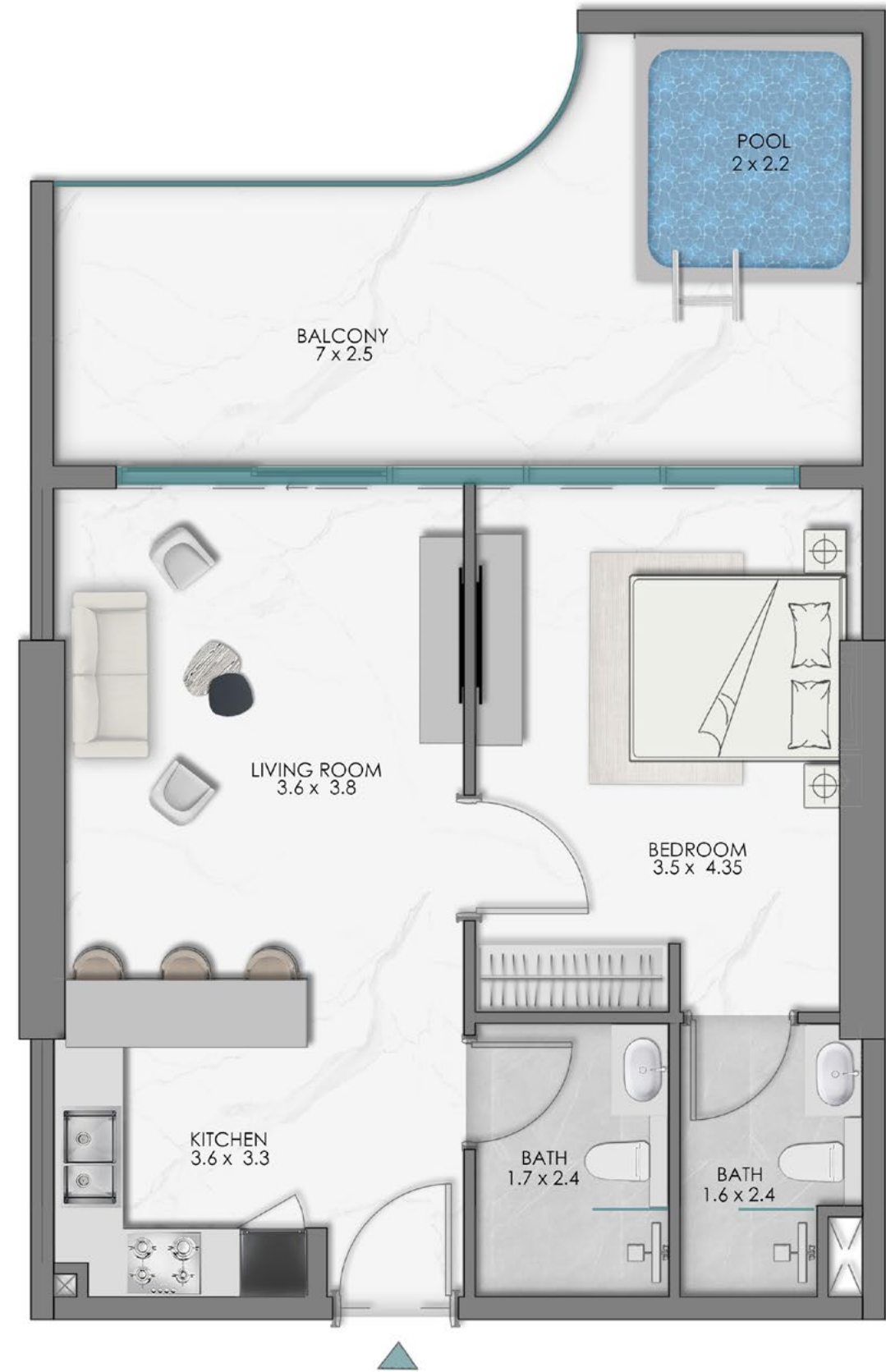
2ND TO 21ST FLOOR KEYPLAN
UNITS - 210-2110



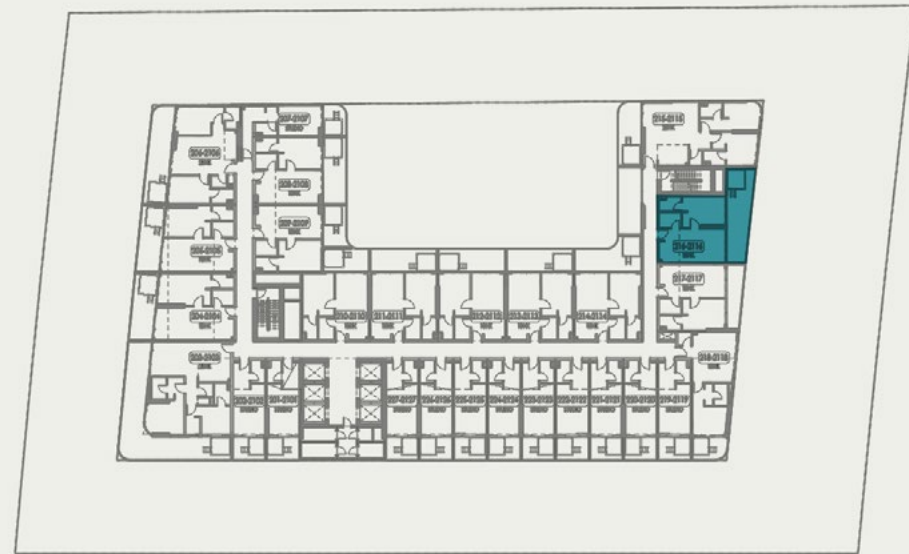
1 BEDROOM TYPE – 7



2ND TO 21ST FLOOR KEYPLAN
UNITS - 214-2114



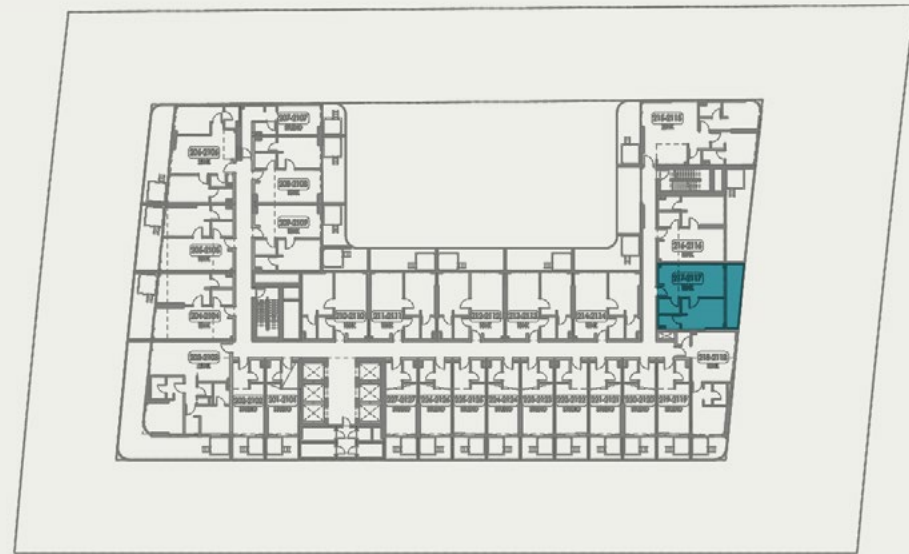
1 BEDROOM TYPE – 8



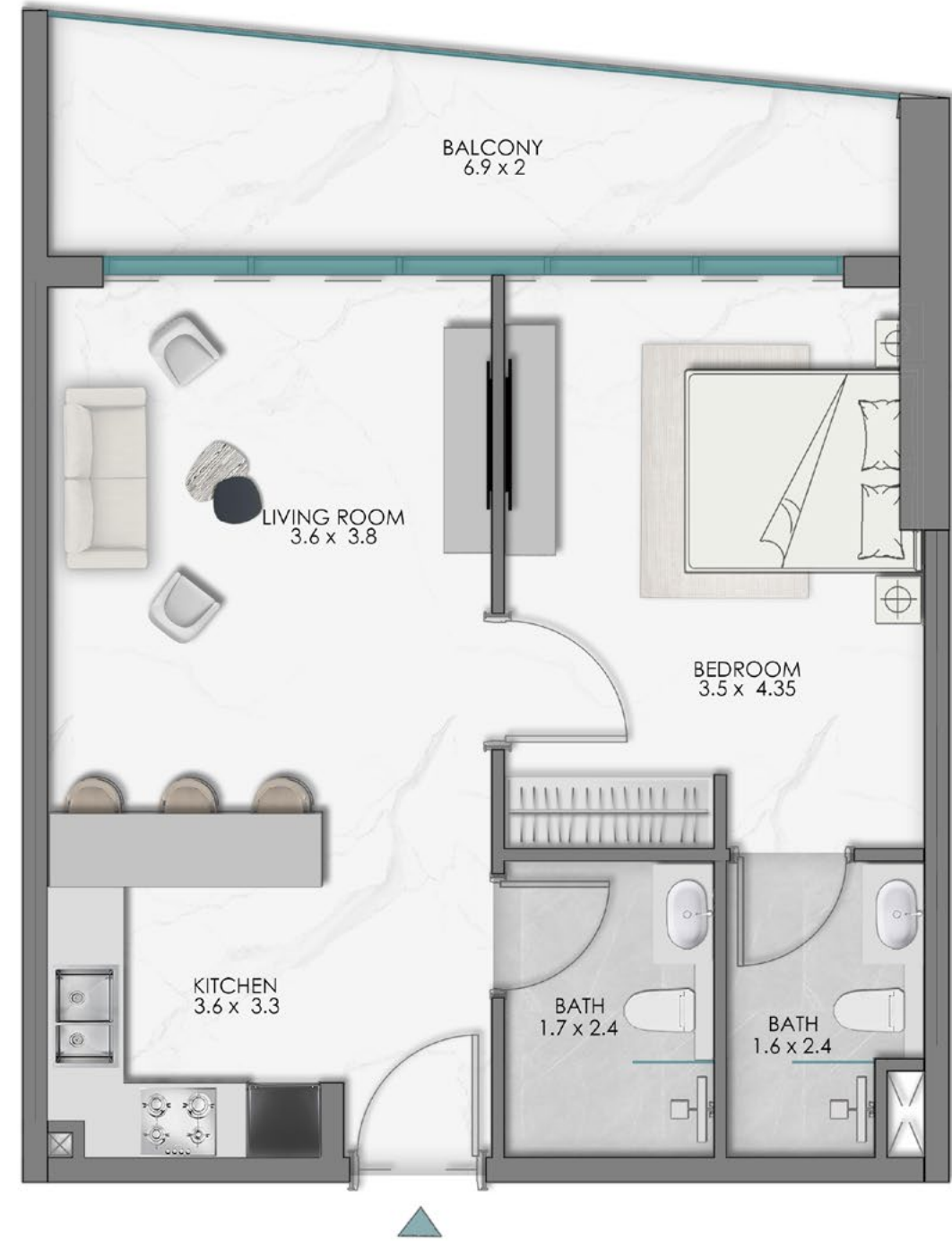
2ND TO 21ST FLOOR KEYPLAN
UNITS - 216-2116



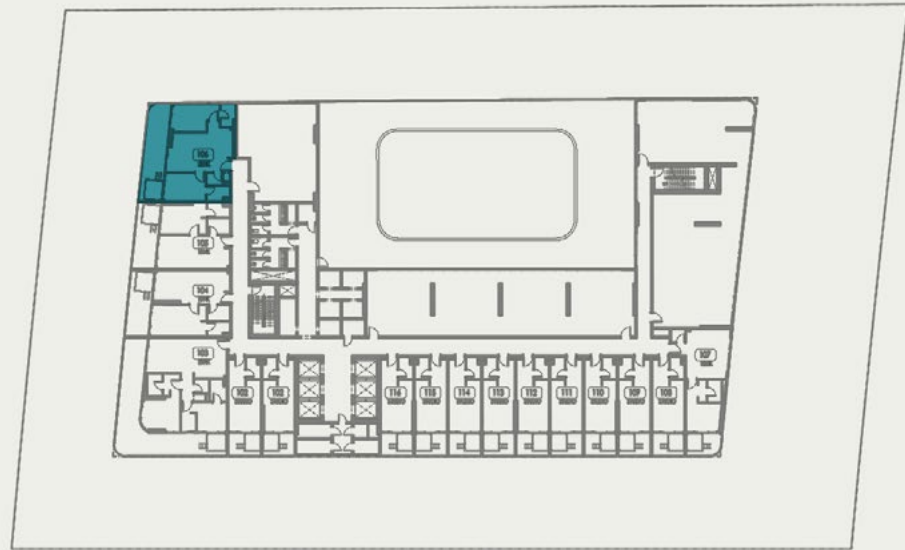
1 BEDROOM TYPE – 9



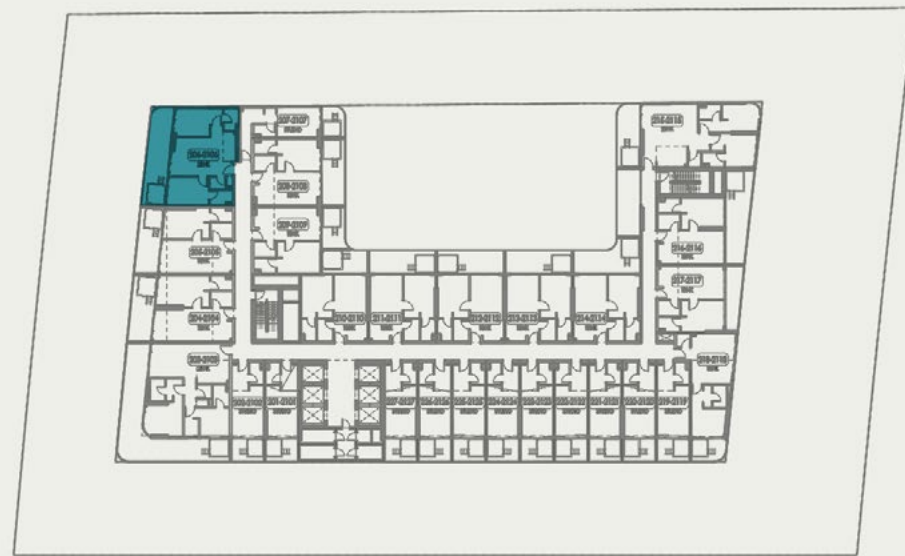
2ND TO 21ST FLOOR KEYPLAN
UNITS - 217-2117



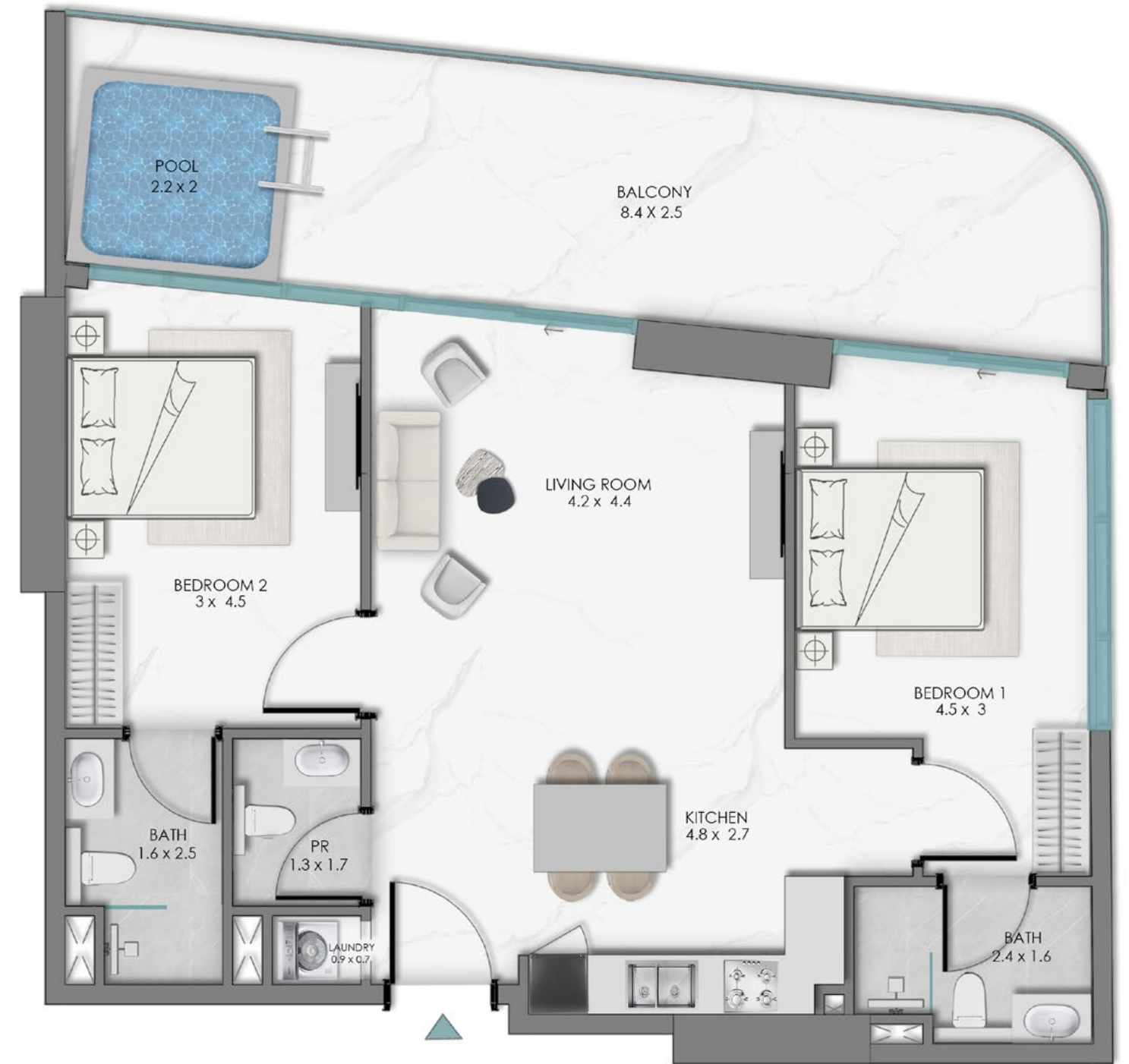
2 BEDROOM TYPE - 1



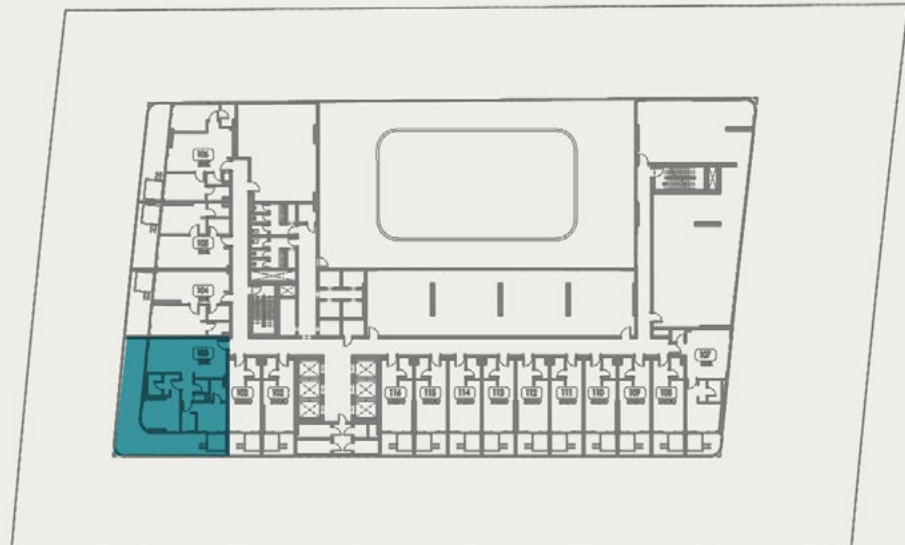
1ST FLOOR KEYPLAN
UNITS - 106



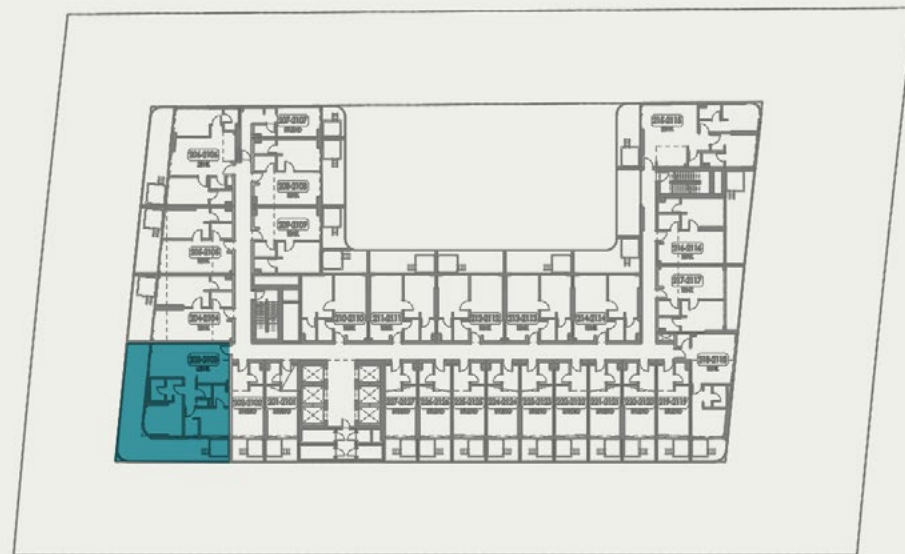
2ND TO 21ST FLOOR KEYPLAN
UNITS - 206-2106



2 BEDROOM TYPE – 2



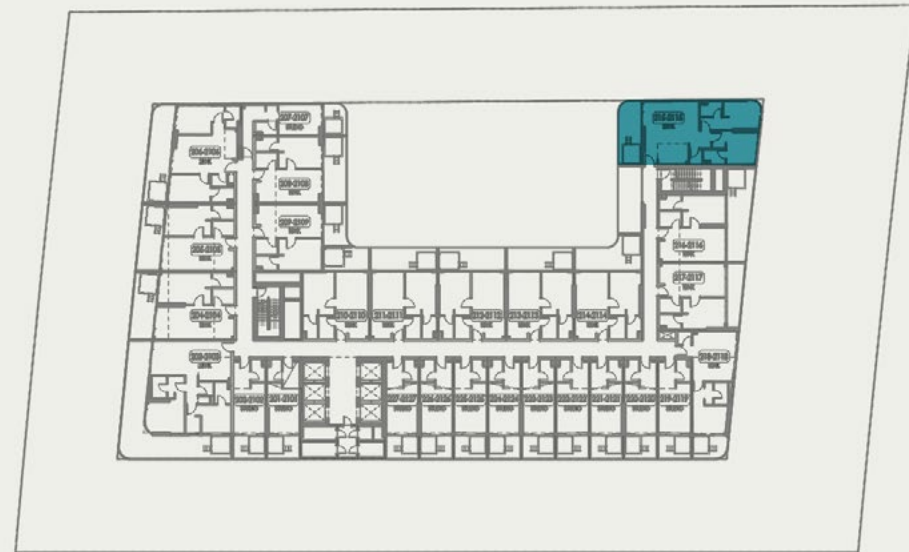
1ST FLOOR KEYPLAN
UNITS - 103



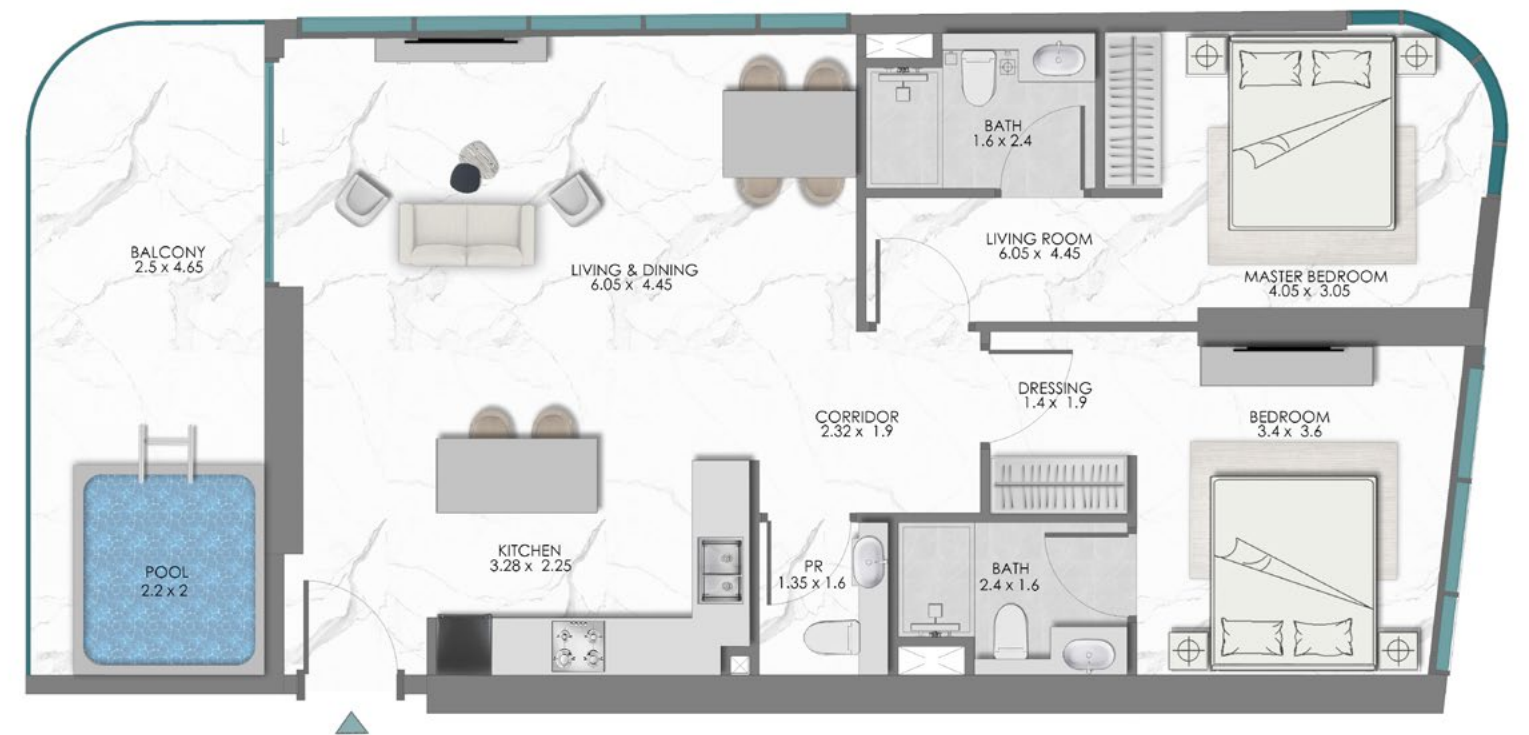
2ND TO 21ST FLOOR KEYPLAN
UNITS - 203-2103



2 BEDROOM TYPE – 3



2ND TO 21ST FLOOR KEYPLAN
UNITS - 215-2115



SAMANA

DEVELOPERS

800-SAMANA

info@samanadevelopers.com

www.samanadevelopers.com

UAE Sales Offices

Business Bay | Dubai Marina | Abu Dhabi