

پروژه فوق لوکس در قاپ ترین موقعیت امارات

توسط معتبر ترین سازنده امارات

JUMEIRAH

RESIDENCES

EMIRATES TOWERS

HomeFinder.global



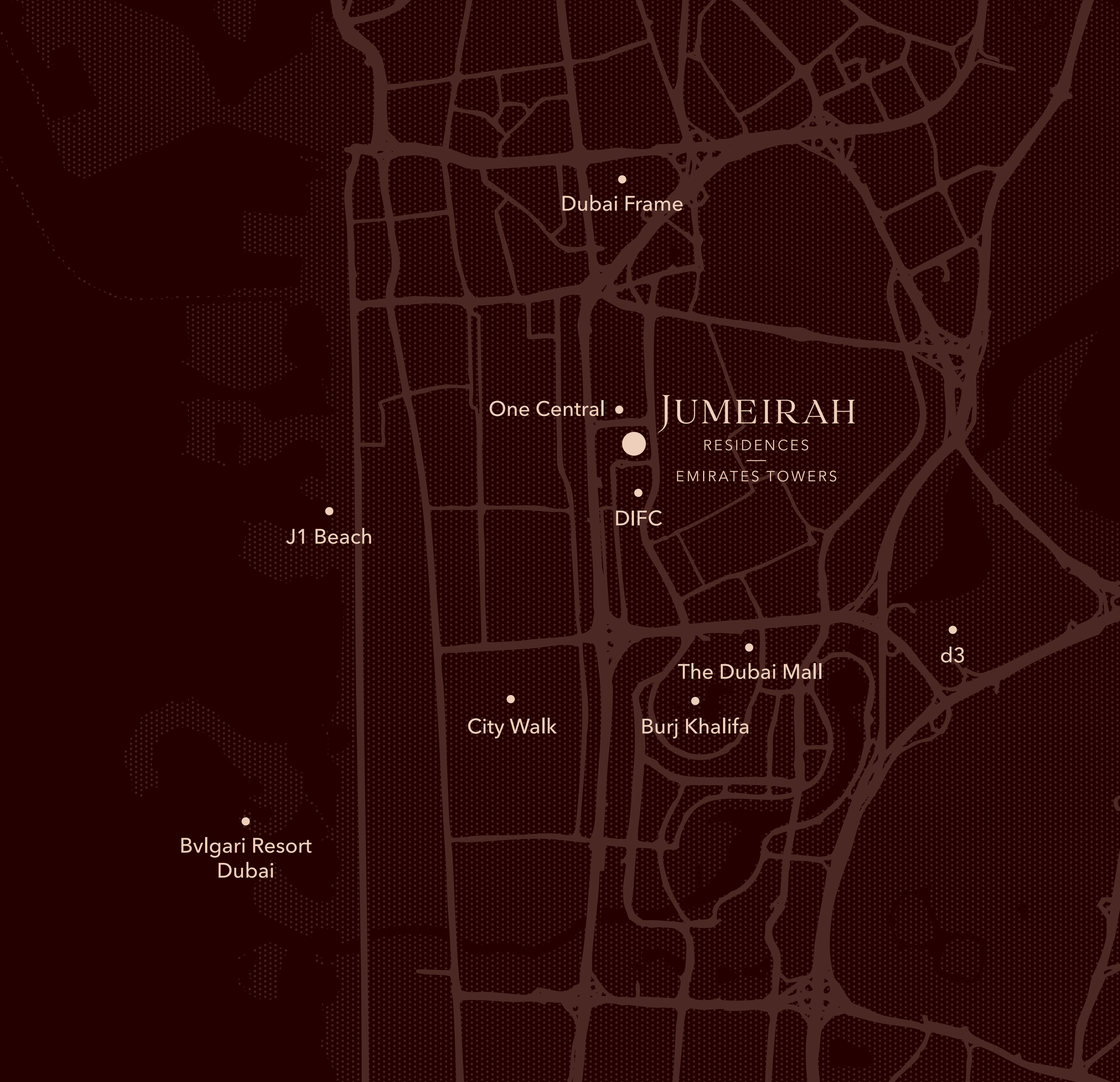
**نشانی فراموش نشدنی شما
مرکز تجارت جهانی دبی**

موفقیت به اینجا منتهی میشود

دسترسی مستقیم به اتوبان شیخ زاید، مرکز تجارت جهانی، دبی مال، برج خلیفه، سی تی واک

احاطه شده توسط موزه آینده، دبی مال، برج خلیفه، مرکز تجارت جهانی، داون تاون دبی، برج های دوقلو امارات تاورز

One Central	5 minutes
The Dubai Mall	7 minutes
City Walk	10 minutes
Dubai Frame	13 minutes
Dubai Design District (d3)	15 minutes
J1 Beach	17 minutes
Bulgari Resort Dubai	20 minutes



JUMEIRAH

RESIDENCES
EMIRATES TOWERS

JUMEIRAH
EMIRATES TOWERS

Downtown Dubai

DIFC

Tower A
(First Release)

Tower B

Museum of the Future

Jumeirah Beach



THE DESTINATION



- 01 JUMEIRAH RESIDENCES EMIRATES TOWERS
- 02 JUMEIRAH EMIRATES TOWERS
- 03 MUSEUM OF THE FUTURE
- 04 DIFC
- 05 ONE CENTRAL
- 06 METRO STATION
- 07 PEDESTRIAN BRIDGE

طراحی بی نظیر برای موفقیت



A WORLD -
RENOWNED
ARCHITECTURAL
SIGNATURE

Located next to the hub of global business in Dubai, Jumeirah Residences Emirates Towers emerges as a new architectural icon on the city's skyline.

This exclusive collection of 1- to 4-bedroom residences is thoughtfully designed to elevate every resident's lifestyle, from sky pools to Jumeirah Signature Services.



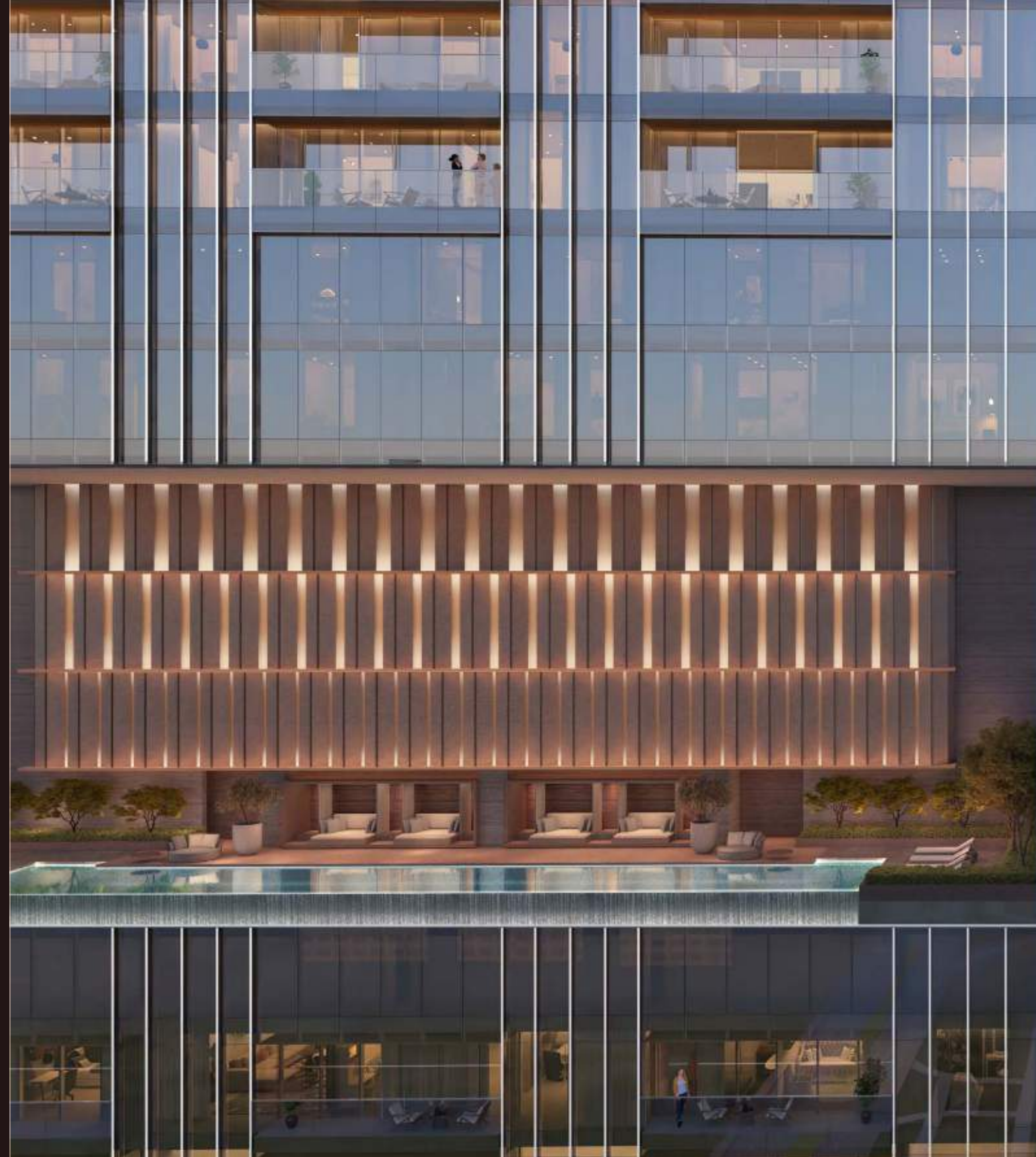
در موقعیتی که از هر طرف نمایی بی نظیر از دبی را به نمایش خواهد گذاشت



These bespoke residences make a powerful impression on Dubai's evolving skyline. Perched on near-invisible stilts, the architecture achieves a striking balance of form and function, designed to complement and enhance the living experience.



SCDA طراحی شده توسط یک از معروف ترین طراحان جهان



تجربه امکانات رفاهی با سقف ها مرتفع و باغهای مصنوعی در طبقات



ورودی لابی مجلل که با استفاده از ایشارهای مصنوعی ، سقف ها مرتع و فضای سبز مهمانان شما را تحت تاثیر قرار دهد



در هر برج تراس وسیع و استخر در میانه برج تعبیه شده است که هر لحظه شما را با نمایی بی نظیر منحصر به فرد خواهد ساخت



در هر برج مرکز ورزشی فوق لوکس، اسپا، و سالن مطالعه برای ساکنین تعبیه شده همچنین امکاناتی صرفاً به صورت اختصاصی برای ساکنین واحدهای ۴ خوابه و پنتهاوس در نظر گرفته شده است



باغ مصنوعی اختصاصی ساکنین واحد های ۴ خوابه و پنتهاوس



The stepped form of the towers gives rise to sculpted sky terraces, enriched with lush landscaping. These elevated retreats offer an exceptional setting for private gatherings and an unforgettable sky pool experience.

تحت مدیریت شرکت معروف
خدمات دهی لوکس جمیرا
لیوینگ

BASIC SERVICES

- 24/7 Security
- Concierge
- Public Area Maintenance
- Public Area Cleaning
- Lounge/Pool Attendants
- Door/Valet
- Lifeguards

À LA CARTE SERVICES

STANDARD SERVICES

- Laundry
- Housekeeping
- Childcare
- Car Care
- Maintenance/Engineering Services
- Groceries Service
- Away Service
- Transportation

SPA & FITNESS SERVICES

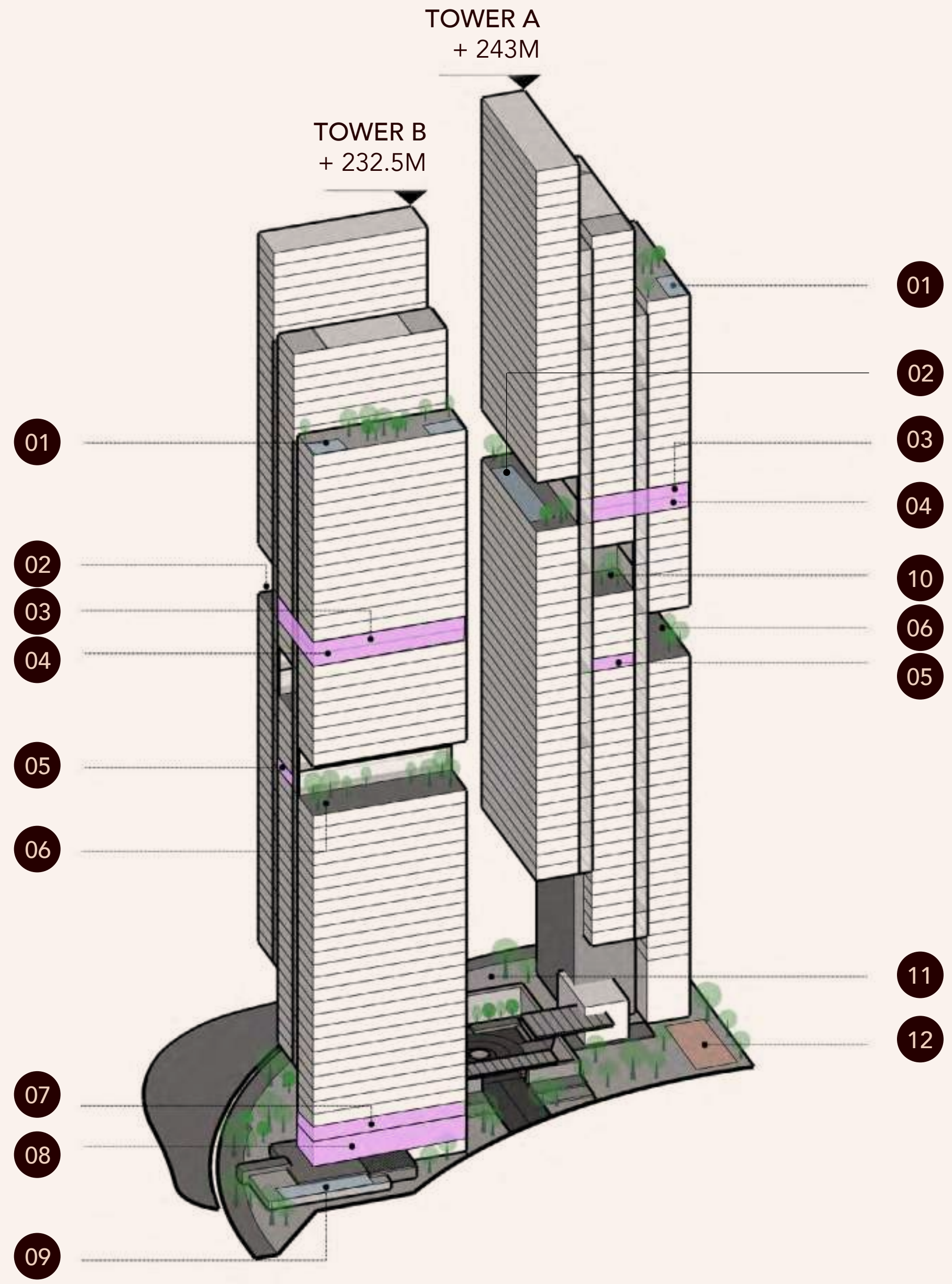
- A wide selection of Jumeirah rejuvenating SPA treatments and massages can be booked with a Jumeirah SPA therapist
- Hair-dressing services can be offered at the salon or at the residence
- Personal trainer is available upon request to deliver an individual training and/or meal plan and control training sessions

PRIVATE CHEF & EVENTS

- Jumeirah renowned chefs at a private meal service
- Personalised event planning

C U R A T E D
E X P E R I E N C E S

- 01 PRIVATE SKY GARDEN
- 02 SKY POOL
- 03 EXCLUSIVE GYM
- 04 FITNESS & WELLNESS CLUB
- 05 GAME ROOM/CO-WORKING LOUNGE
- 06 EVENT TERRACE
- 07 FITNESS CLUB
- 08 GROUND-LEVEL AMENITIES
- 09 FAMILY POOL
- 10 POCKET GARDEN
- 11 RESTAURANT
- 12 PADEL COURT



G A R D E N - L E V E L
A M E N I T I E S

- 01 ENTRANCE
- 02 ARRIVAL TOWER LOBBY LOUNGE
- 03 CAR PARK ACCESS
- 04 RESTAURANT
- 05 PADEL COURT
- 06 ADULTS POOL
- 07 KIDS' POOL
- 08 SOCIAL HALL
- 09 MULTI-PURPOSE SPACE
- 10 DINING/EVENT
- 11 OPEN KITCHEN / EVENT
- 12 PLAYGROUND
- 13 SPLASH PLAYGROUND
- 14 BACK-OF-HOUSE ACCESS
- 15 POWDER ROOM
- 16 PET LAWN





JUMEIRAH
RESIDENCES
EMIRATES TOWERS

ENTRANCE



DROP-OFF



DROP-OFF



FINE DINING RESTAURANT



FINE DINING RESTAURANT



ARRIVAL COURTYARD



LOBBY







GROUND FLOOR LIFT LOBBY



TOWER B



FAMILY POOL



FAMILY POOL



FAMILY POOL



KIDS' POOL







THE SOCIAL HALL



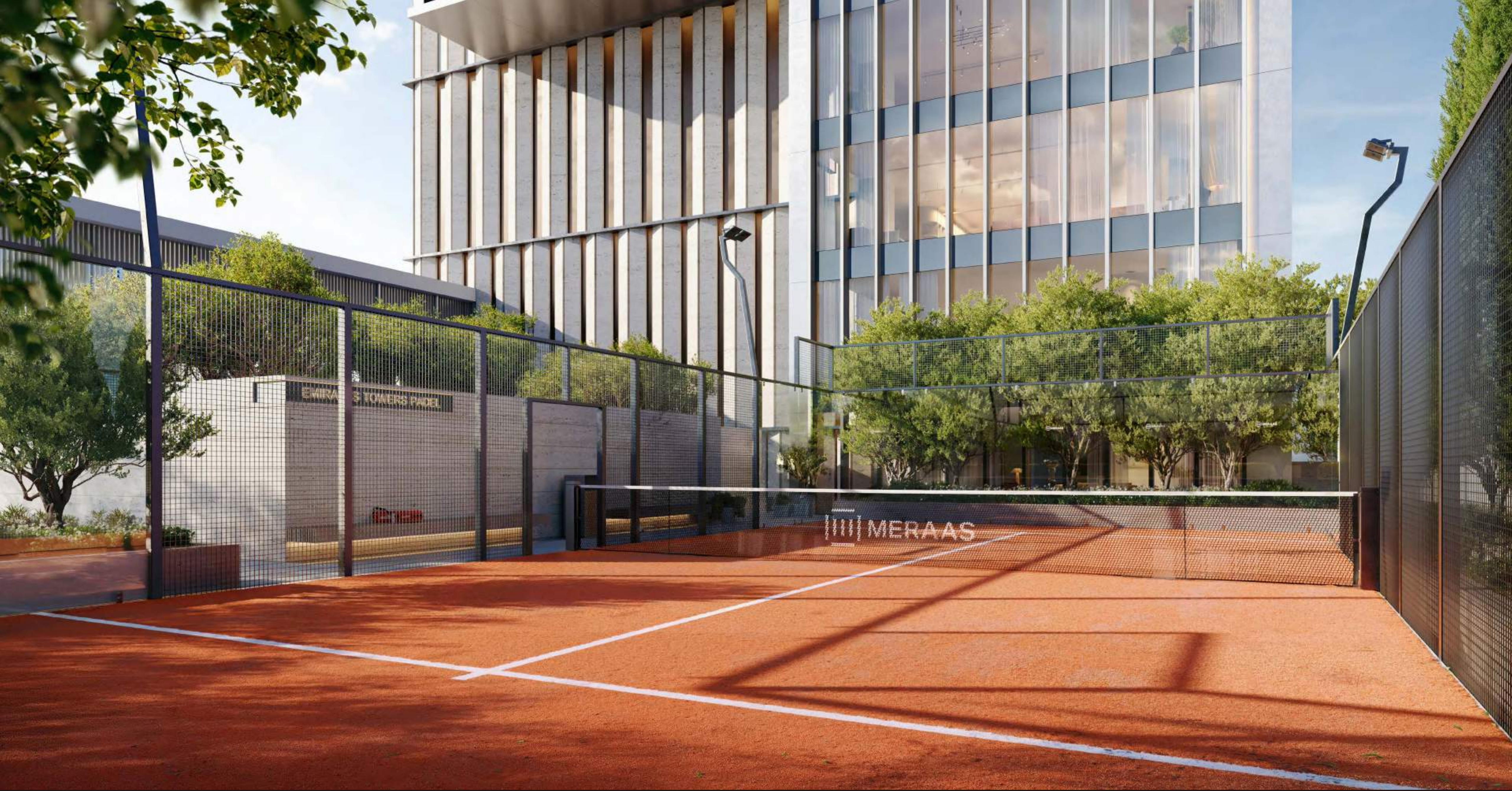
MULTI-PURPOSE ROOM



PRIVATE DINING AREA



PADEL COURT



EMIRATES TOWERS PADEL

MERAAS

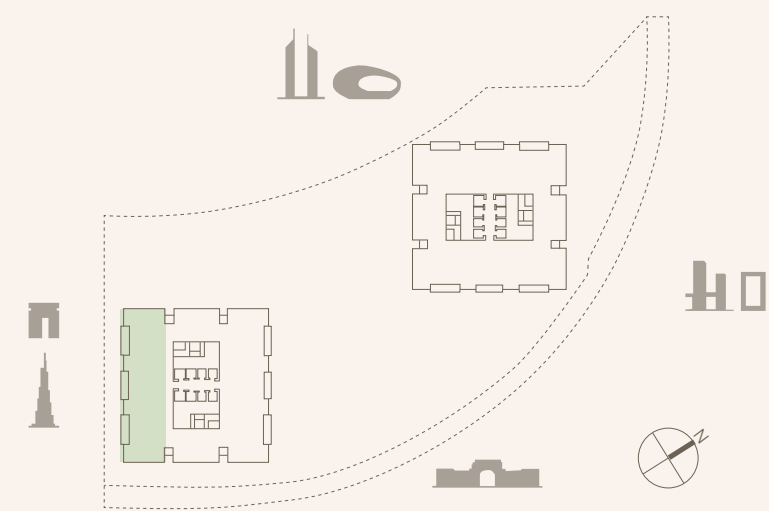
PADEL COURT

S K Y A M E N I T I E S

LEVEL 27

TOWER A

- 01 SUNKEN LOUNGE WITH FIRE PIT
- 02 OUTDOOR CINEMA
- 03 SKY VIEW SEATING
- 04 BBQ/PARTY AREA
- 05 GAME ROOM
- 06 CO-WORKING LOUNGE





SKY TERRACE



SKY TERRACE LOUNGE AREA



GAME ROOM

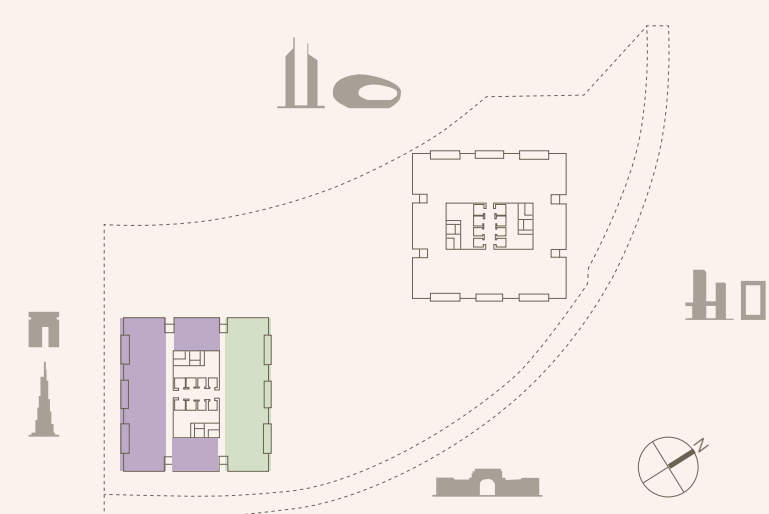
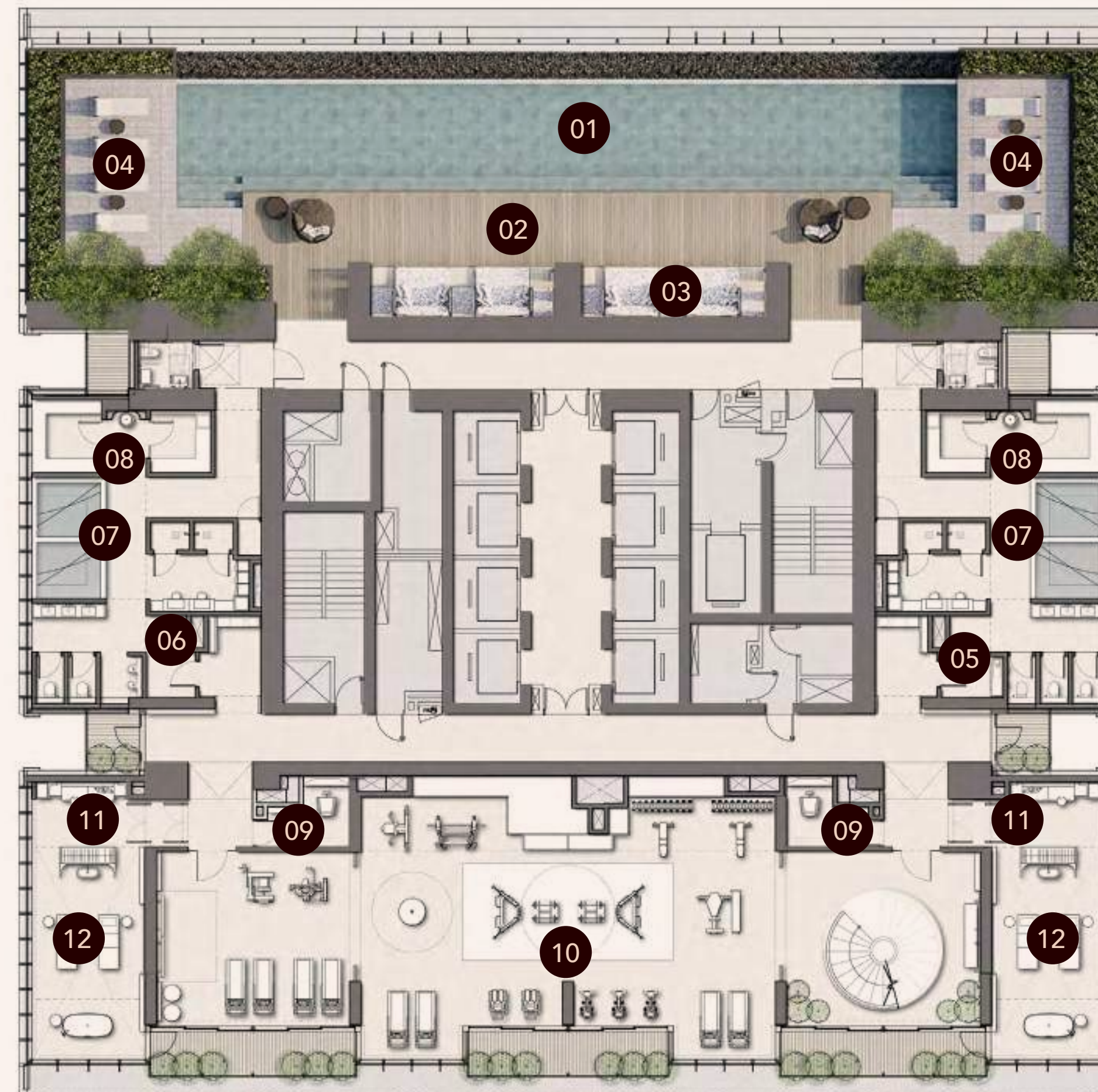


CO-WORKING LOUNGE

LEVEL 35

TOWER A

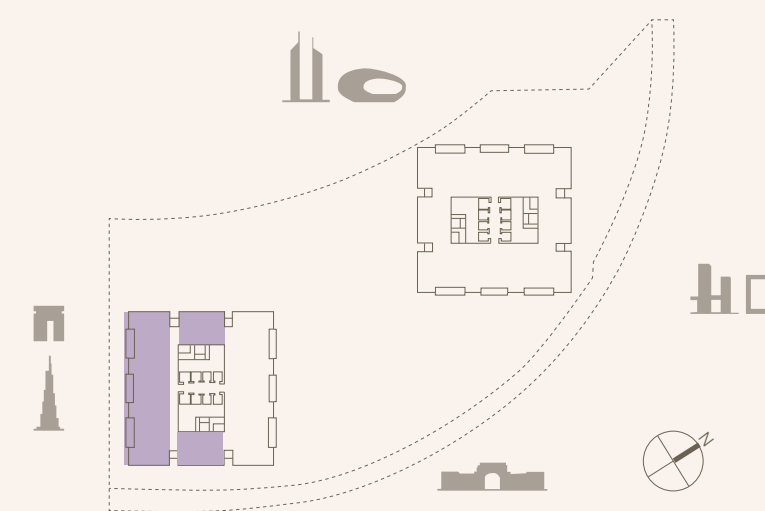
- 01 SKY POOL
- 02 POOL DECK
- 03 CABANAS
- 04 POOL LOUNGERS
- 05 LADIES CHANGING ROOM
- 06 GENTS CHANGING ROOM
- 07 COLD/HOT PLUNGE
- 08 STEAM/SAUNA
- 09 SALON
- 10 FITNESS CLUB
- 11 SPA SUITE LOUNGE
- 12 SPA SUITE



LEVEL 36

TOWER A

- 13 EXCLUSIVE GYM RECEPTION
- 14 EXCLUSIVE GYM
- 15 REFORMER STATIONS
- 16 TODDLER'S CLUB
- 17 CINEMA





SKY POOL



GYM RECEPTION



GYM STAIRCASE





EXCLUSIVE GYM



TREATMENT ROOM



STEAM

MIAZ

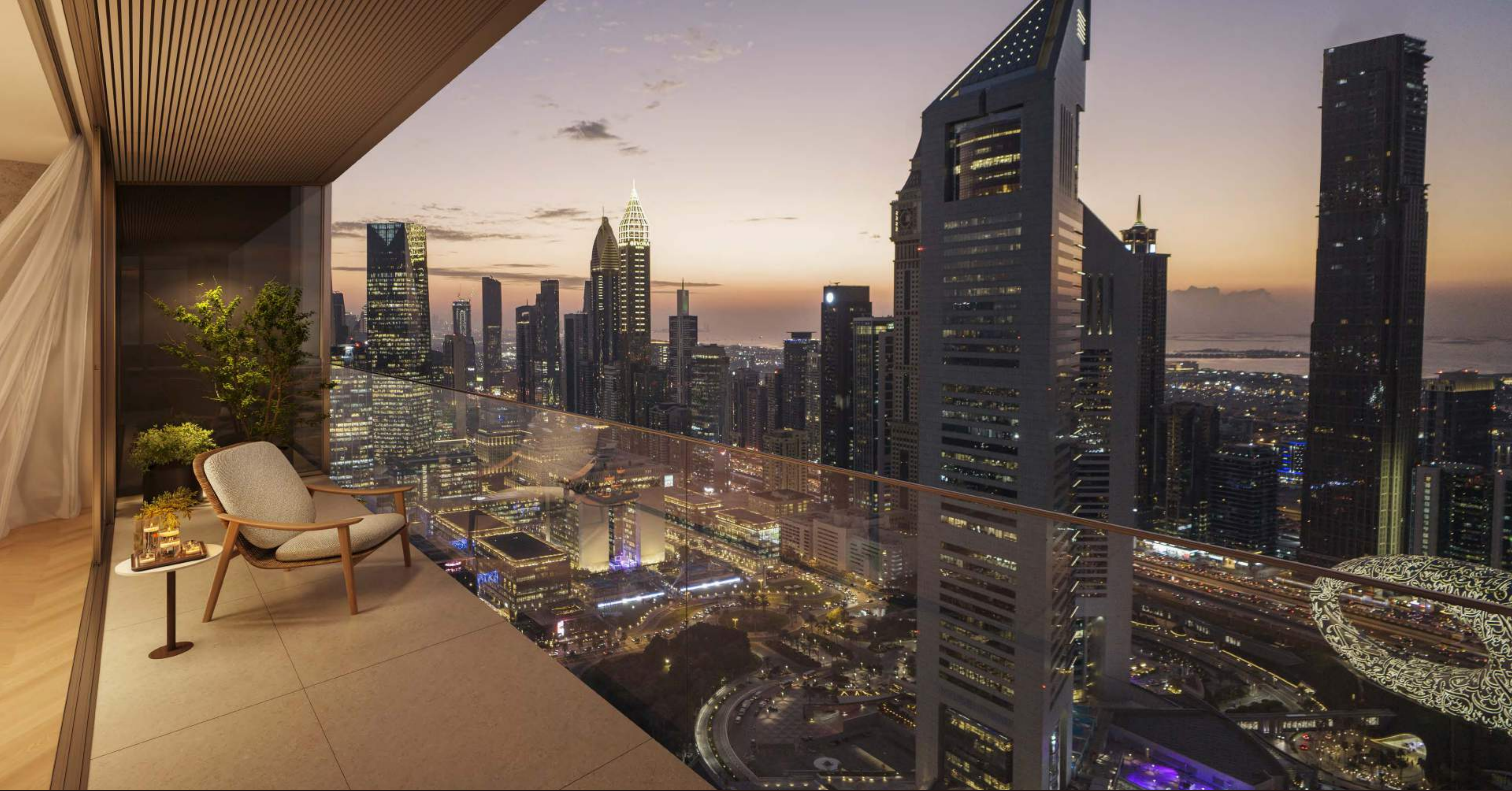


NAIL SALON



THE RESIDENCES





1-BEDROOM RESIDENCE

TERRACE



2-BEDROOM RESIDENCE

LIVING & DINING ROOM



2-BEDROOM RESIDENCE

LIVING ROOM



2-BEDROOM RESIDENCE

TERRACE





3-BEDROOM RESIDENCE

LIVING, DINING & KITCHEN



3-BEDROOM RESIDENCE

LIVING ROOM



3-BEDROOM RESIDENCE

MASTER BEDROOM

















4-BEDROOM RESIDENCE

PRIVATE TERRACE & POOL

BUILDING CHARACTERISTICS

- Tower A: G+59 | 394 units
- Tower B: G+56 | 360 units
- 1 to 3-Bedroom Residences
- 4-Bedroom Special Residences

INDOOR AMENITIES FOR ALL RESIDENCES

- Grand double-height lobby
- Exclusive lounge areas
- Show kitchen connected with private dining area, multi-purpose room and the social hall
- Wellness Club includes yoga, spinning and private class studios

OUTDOOR AMENITIES FOR ALL RESIDENCES

- Infinity pool with the spectacular view of the Museum of The Future
- Shaded kids' pool and outdoor wet play area
- Lush green spaces
- Tranquil gardens with the Dubai skyline views

INDOOR AMENITIES IN EACH TOWER

- Fully-equipped gym
- Executive gym for exclusive 3 and 4-bedroom residences
- Wellness Club including spa and salon
- Indoor cinema
- Toddler's club
- Gaming room
- Co-working lounge

OUTDOOR AMENITIES IN EACH TOWER

- Outdoor Sky Lounge with sunken seating area
- BBQ and entertainment area
- Outdoor cinema
- Infinity sky pool with breathtaking views of the Dubai landmarks

SPECIALTIES

- Fine Dining Restaurant

UNIT TYPES	TOTAL COUNT	MINIMUM TOTAL AREA	MAXIMUM TOTAL AREA
1-Bedroom	250	861 sq.ft.	898 sq.ft.
2-Bedroom	170	1115 sq.ft.	1165 sq.ft.
2-Bedroom with Maid	222	1373 sq.ft.	1590 sq.ft.
3-Bedroom	56	1925 sq.ft.	1946 sq.ft.
3-Bedroom Double-height Unit	48	2099 sq.ft.	2564 sq.ft.
4-Bedroom Double-height Unit	8	3473 sq.ft.	6366 sq.ft.
Total	754		

	GFA	BUA
Residential	107,487 sq.m./ 1,156,249 sq.ft.	182,427 sq.m./ 1,962,973 sq.ft.

F L O O R P L A N S

JUMEIRAH

RESIDENCES
EMIRATES TOWERS

1-BEDROOM TYPE A1

TOWER A

UNIT NUMBER
4406, 4606, 4806, 5006, 5206, 5406

SUITE AREA
66.85 SQM | 719.57 SQFT

BALCONY AREA
13.21 SQM | 142.19 SQFT

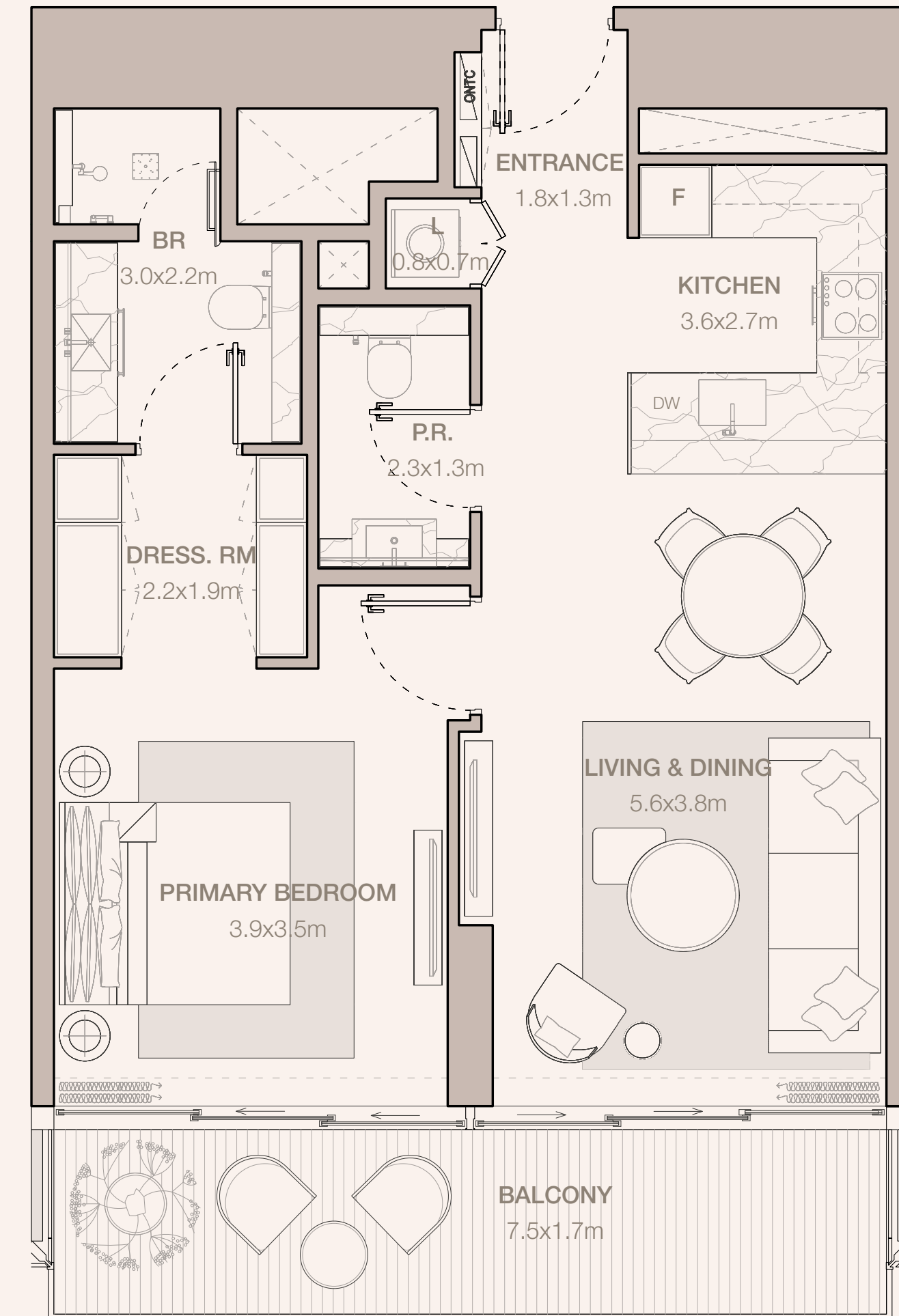
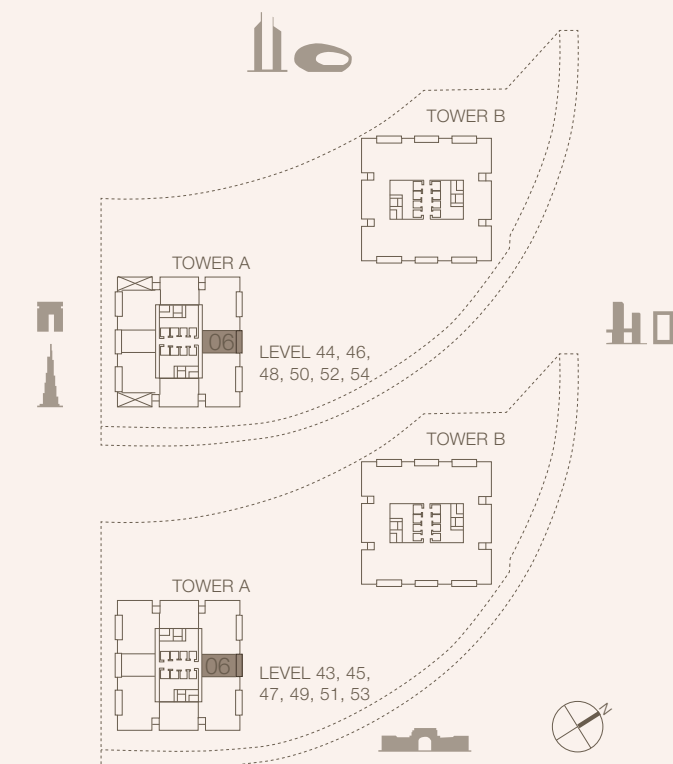
TOTAL
80.06 SQM | 861.76 SQFT

UNIT NUMBER
4306, 4506, 4706, 4906, 5106, 5306

SUITE AREA
66.97 SQM | 720.86 SQFT

BALCONY AREA
13.21 SQM | 142.19 SQFT

TOTAL
80.18 SQM | 863.05 SQFT



Disclaimer: Plans, details and unit orientation included are indicative only and are subject to change by the developer/seller at its sole discretion without notice and/or liability. All images, including features, finishes, furnishings, view and scale are illustrative only. Final areas, orientation, dimensions, layout and materials may differ from those stated.

JUMEIRAH

RESIDENCES
EMIRATES TOWERS

2-BEDROOM TYPE B1

TOWER A

UNIT NUMBER
3704, 3804, 3904, 4004

SUITE AREA
103.32 SQM | 1112.13 SQFT

BALCONY AREA
4.53 SQM | 48.76 SQFT

TOTAL
107.85 SQM | 1160.89 SQFT

UNIT NUMBER
1105, 1205

SUITE AREA
103.33 SQM | 1112.23 SQFT

BALCONY AREA
4.87 SQM | 52.42 SQFT

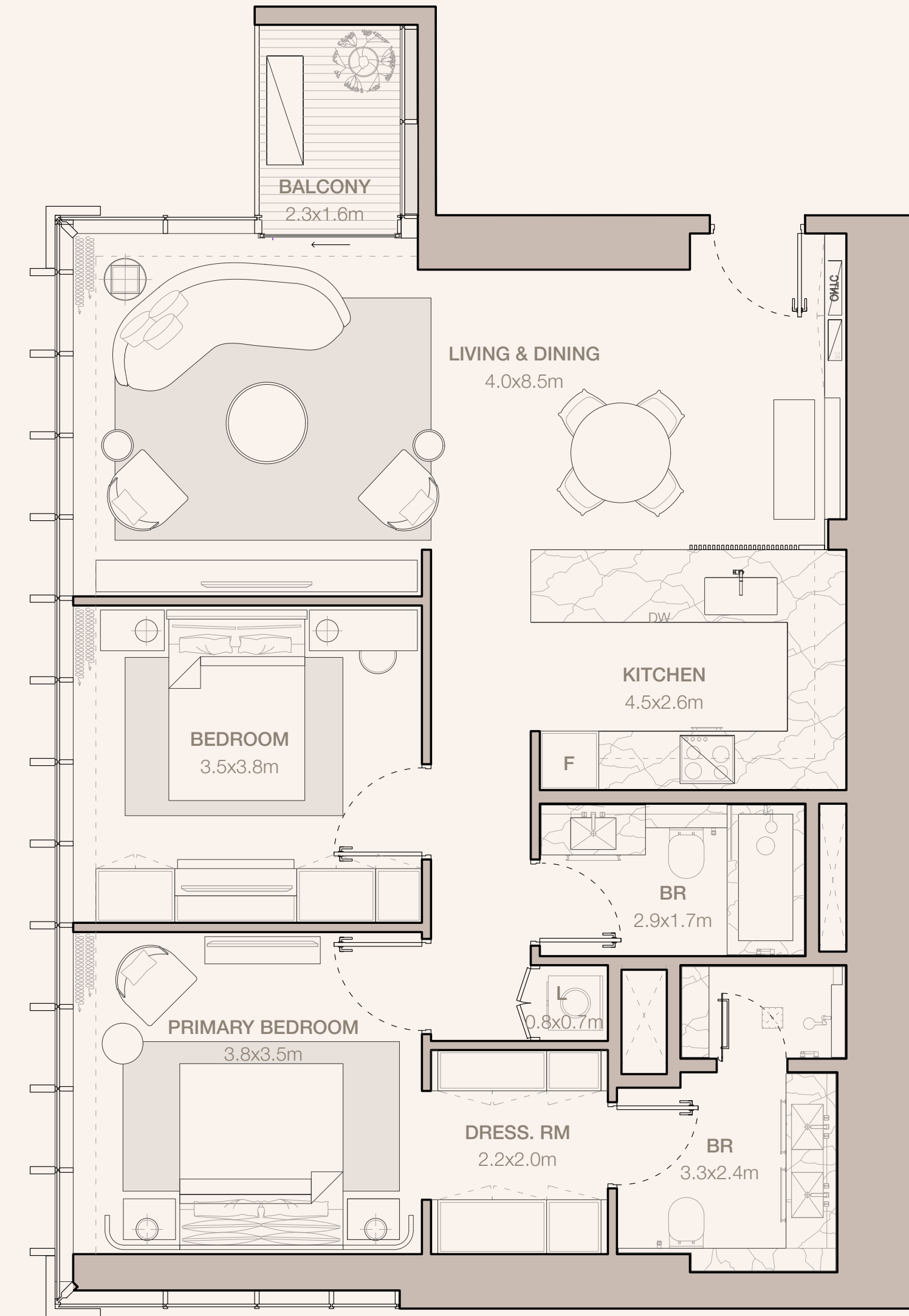
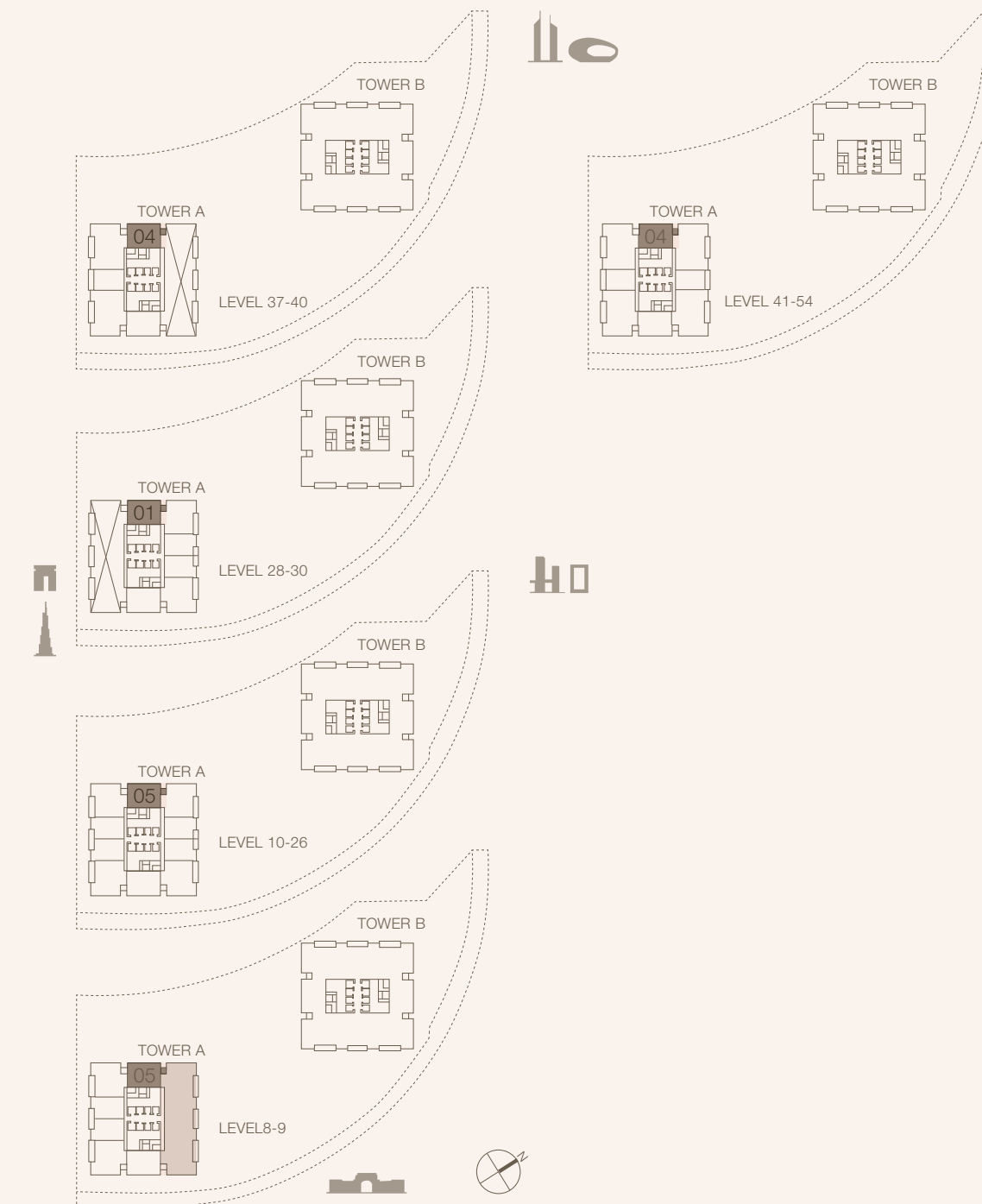
TOTAL
108.20 SQM | 1164.66 SQFT

UNIT NUMBER
805, 905, 1005, 1305, 1405, 1505, 1605, 1705, 1805, 1905, 2005, 2105,
2205, 2305, 2405, 2505, 2605

SUITE AREA
103.33 SQM | 1112.23 SQFT

BALCONY AREA
4.89 SQM | 52.64 SQFT

TOTAL
108.22 SQM | 1164.87 SQFT



Disclaimer: Plans, details and unit orientation included are indicative only and are subject to change by the developer/seller at its sole discretion without notice and/or liability. All images, including features, finishes, furnishings, view and scale are illustrative only. Final areas, orientation, dimensions, layout and materials may differ from those stated.

JUMEIRAH

RESIDENCES

EMIRATES TOWERS

2-BEDROOM TYPE B2

TOWER A

UNIT NUMBER
3403, 3803, 4003, 4203

SUITE AREA
114.13 SQM | 1228.49 SQFT

BALCONY AREA
13.43 SQM | 144.56 SQFT

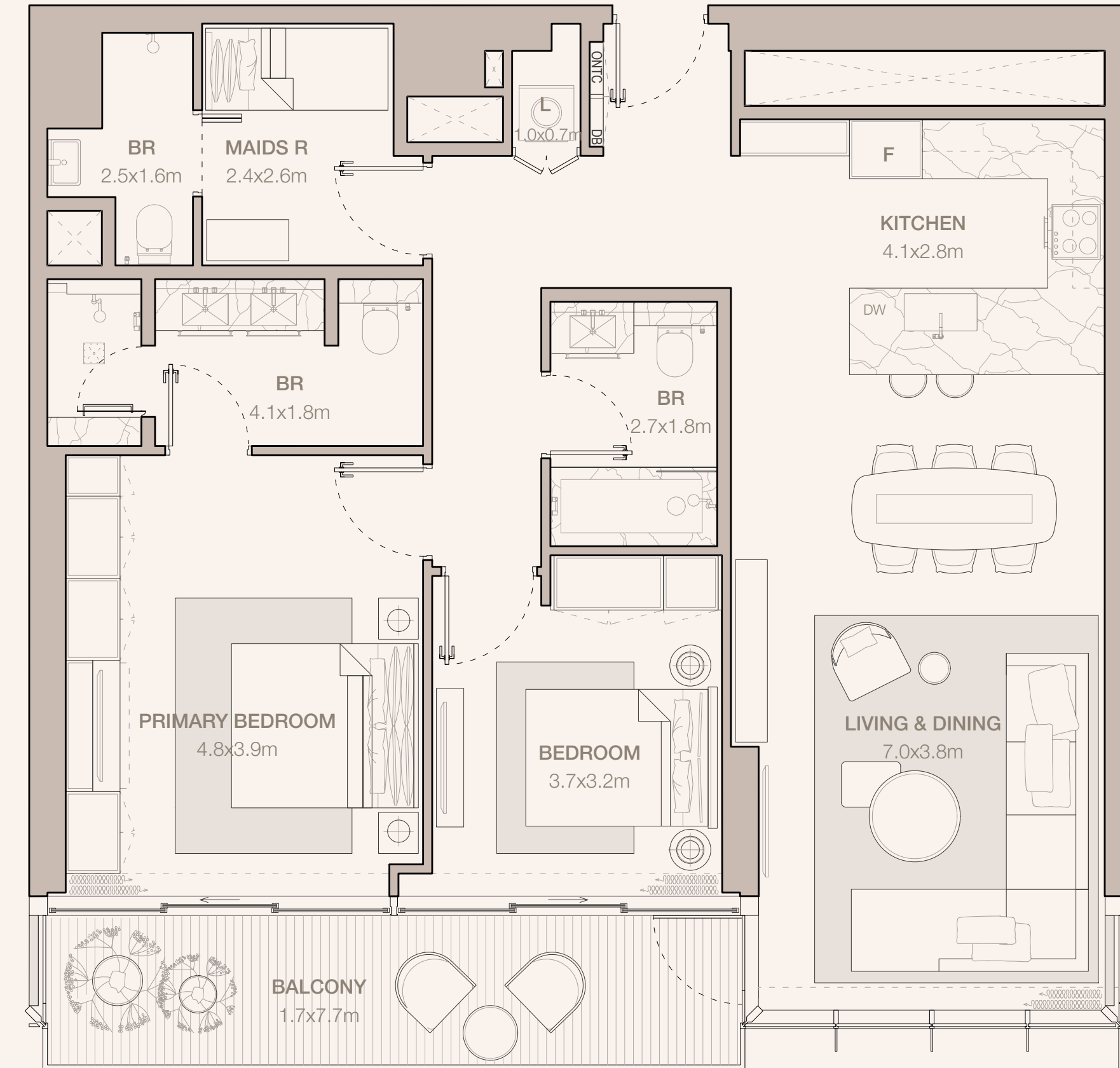
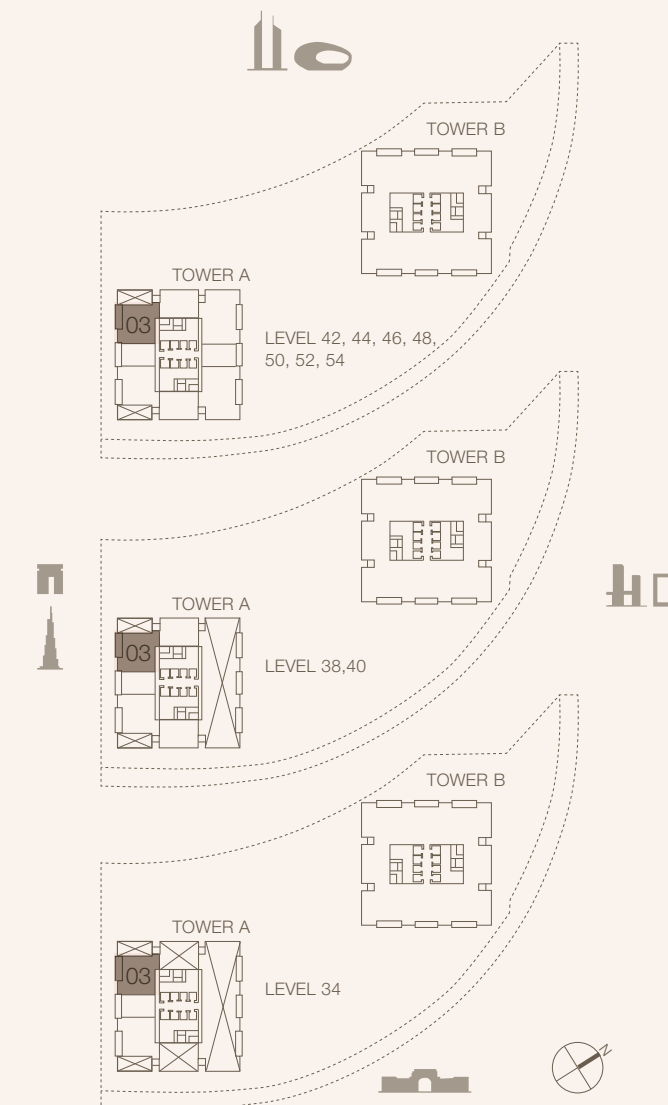
TOTAL
127.56 SQM | 1373.04 SQFT

UNIT NUMBER
4403, 4603, 4803, 5003, 5203, 5403

SUITE AREA
114.26 SQM | 1229.88 SQFT

BALCONY AREA
13.3 SQM | 143.16 SQFT

TOTAL
127.56 SQM | 1373.04 SQFT



Disclaimer: Plans, details and unit orientation included are indicative only and are subject to change by the developer/seller at its sole discretion without notice and/or liability. All images, including features, finishes, furnishings, view and scale are illustrative only. Final areas, orientation, dimensions, layout and materials may differ from those stated.

JUMEIRAH

RESIDENCES

EMIRATES TOWERS

2-BEDROOM TYPE B3A

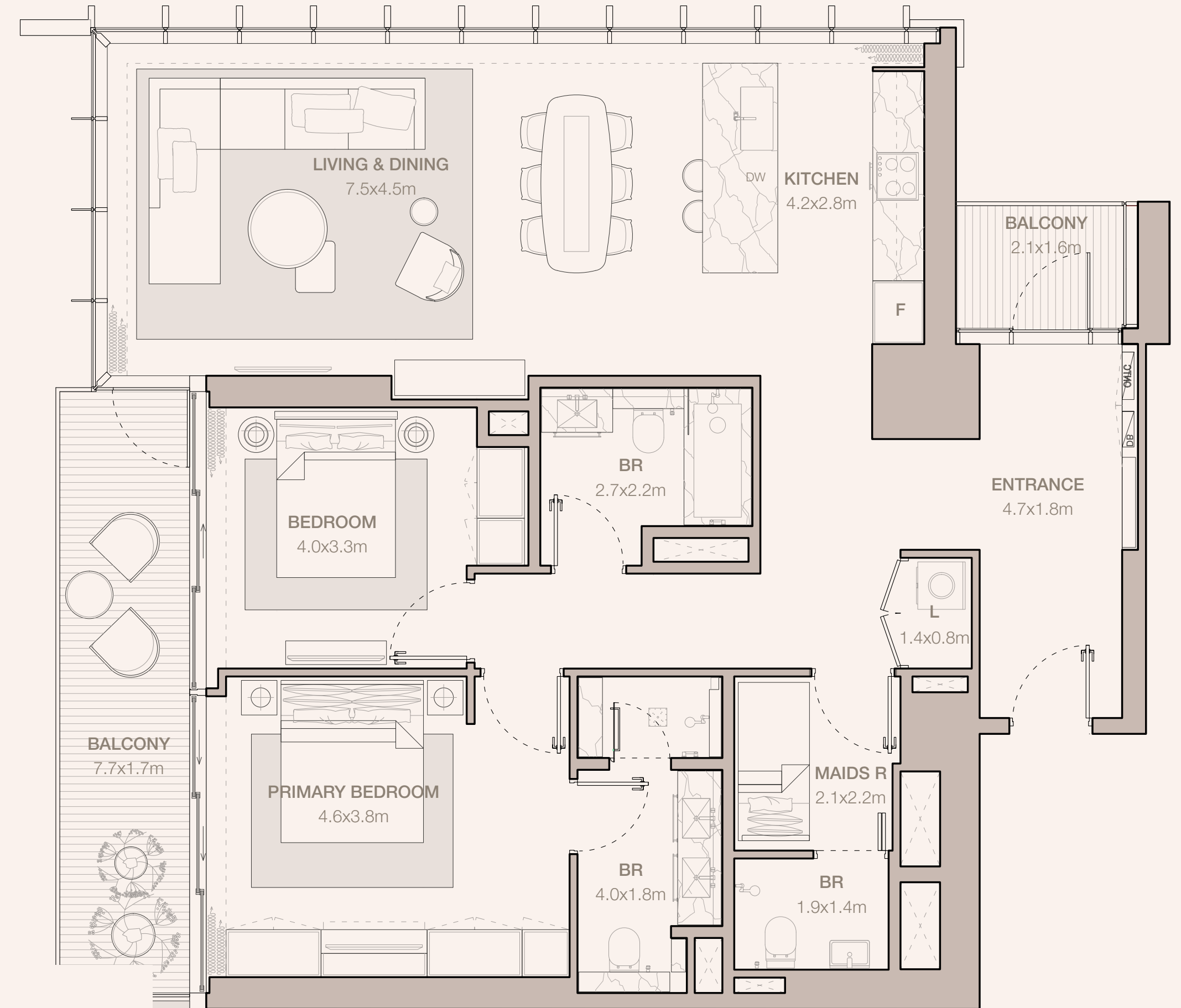
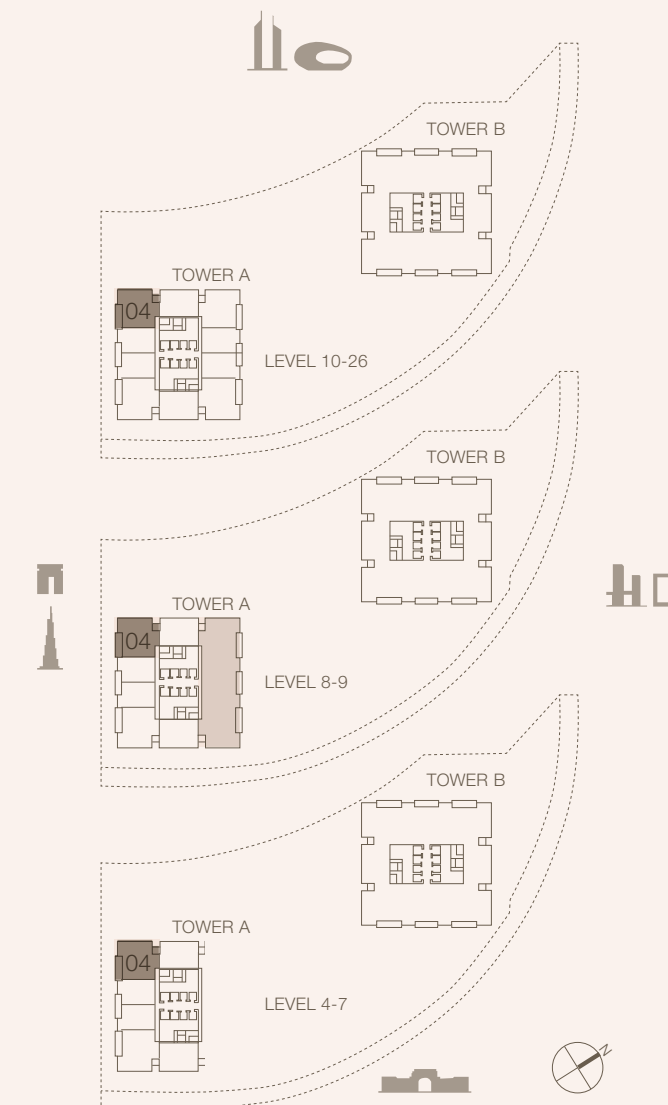
TOWER A

UNIT NUMBER
404, 504, 604, 704, 804, 904, 1004, 1104, 1204, 1304, 1404, 1504, 1604,
1704, 1804, 1904, 2004, 2104, 2204, 2304, 2404, 2504, 2604

SUITE AREA
129.79 SQM | 1397.05 SQFT

BALCONY AREA
17.96 SQM | 193.32 SQFT

TOTAL
147.75 SQM | 1590.37 SQFT



Disclaimer: Plans, details and unit orientation included are indicative only and are subject to change by the developer/seller at its sole discretion without notice and/or liability. All images, including features, finishes, furnishings, view and scale are illustrative only. Final areas, orientation, dimensions, layout and materials may differ from those stated.

JUMEIRAH

RESIDENCES
EMIRATES TOWERS

3-BEDROOM TYPE C1

TOWER A

UNIT NUMBER
3903

SUITE AREA
177.55 SQM | 1911.13 SQFT

BALCONY AREA
17.81 SQM | 191.71 SQFT

TOTAL
195.36 SQM | 2102.84 SQFT

UNIT NUMBER
3703, 4303, 4503, 4703, 4903, 5103, 5303

SUITE AREA
178.57 SQM | 1922.11 SQFT

BALCONY AREA
17.81 SQM | 191.71 SQFT

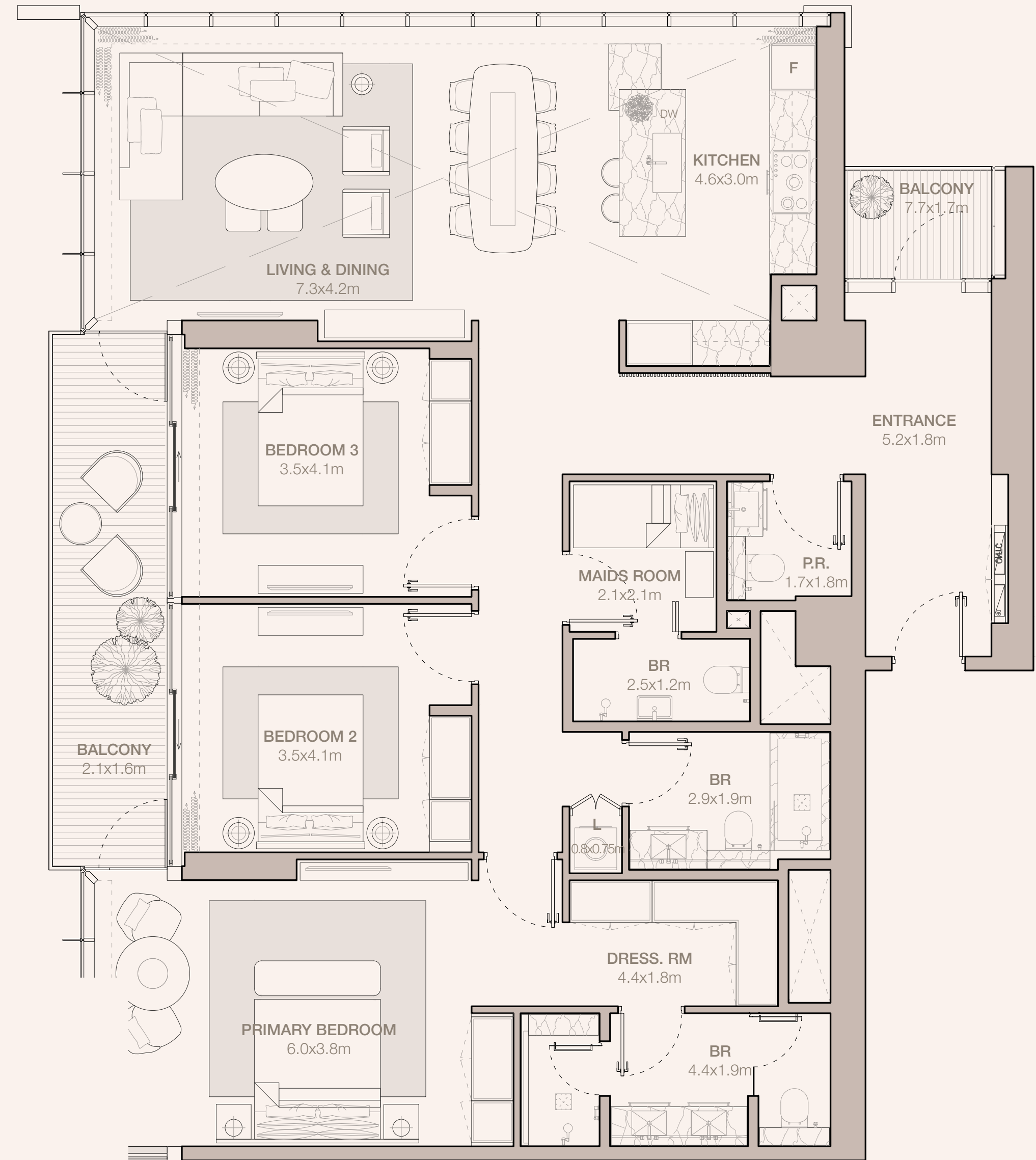
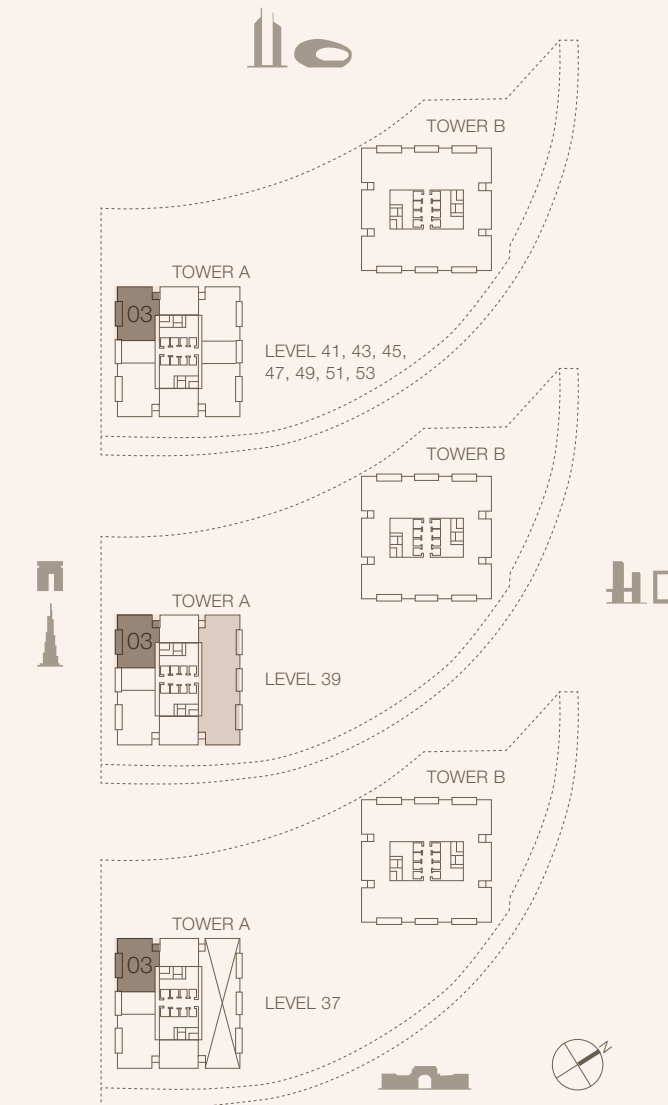
TOTAL
196.38 SQM | 2113.82 SQFT

UNIT NUMBER
4103

SUITE AREA
178.58 SQM | 1922.22 SQFT

BALCONY AREA
17.81 SQM | 191.71 SQFT

TOTAL
196.39 SQM | 2113.92 SQFT



Disclaimer: Plans, details and unit orientation included are indicative only and are subject to change by the developer/seller at its sole discretion without notice and/or liability. All images, including features, finishes, furnishings, view and scale are illustrative only. Final areas, orientation, dimensions, layout and materials may differ from those stated.

JUMEIRAH

RESIDENCES
EMIRATES TOWERS

3-BEDROOM TYPE C1A

TOWER A

UNIT NUMBER
4305, 4505, 4705, 4905, 5105, 5305

SUITE AREA
165.63 SQM | 1782.83 SQFT

BALCONY AREA
13.3 SQM | 143.16 SQFT

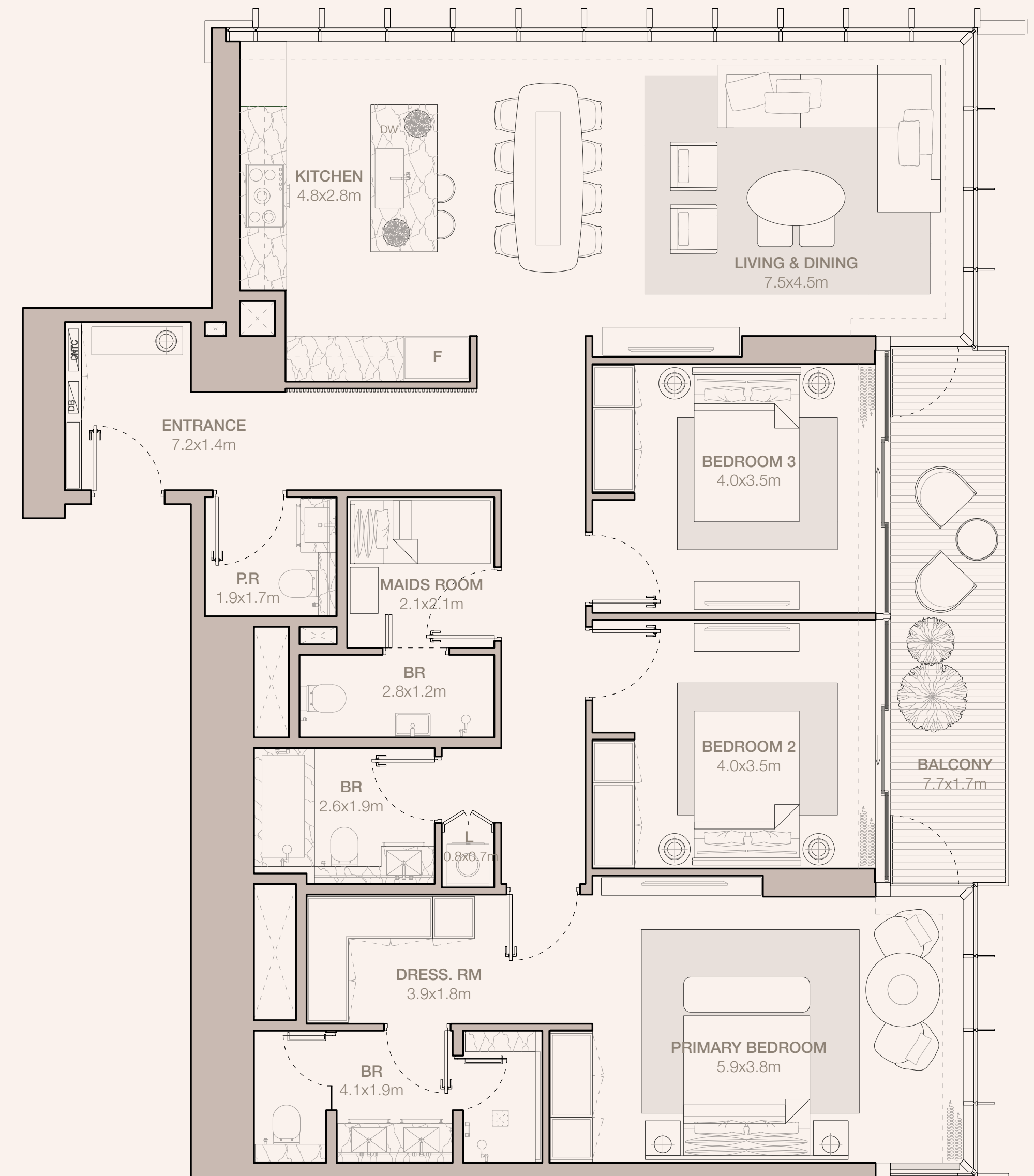
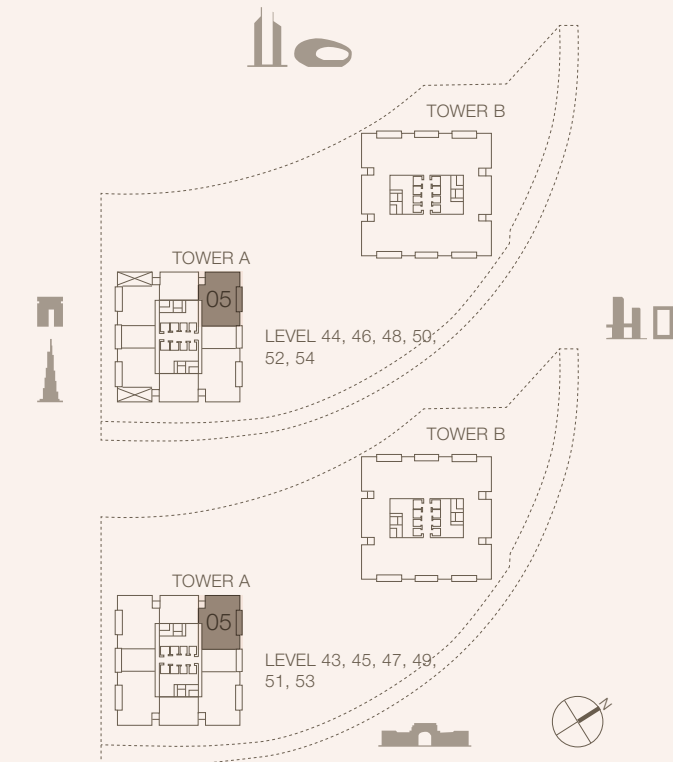
TOTAL
178.93 SQM | 1925.99 SQFT

UNIT NUMBER
4405, 4605, 4805, 5005, 5205, 5405

SUITE AREA
165.66 SQM | 1783.15 SQFT

BALCONY AREA
13.3 SQM | 143.16 SQFT

TOTAL
178.96 SQM | 1926.31 SQFT



Disclaimer: Plans, details and unit orientation included are indicative only and are subject to change by the developer/seller at its sole discretion without notice and/or liability. All images, including features, finishes, furnishings, view and scale are illustrative only. Final areas, orientation, dimensions, layout and materials may differ from those stated.

JUMEIRAH

RESIDENCES
EMIRATES TOWERS

3-BEDROOM TYPE C2 (M)

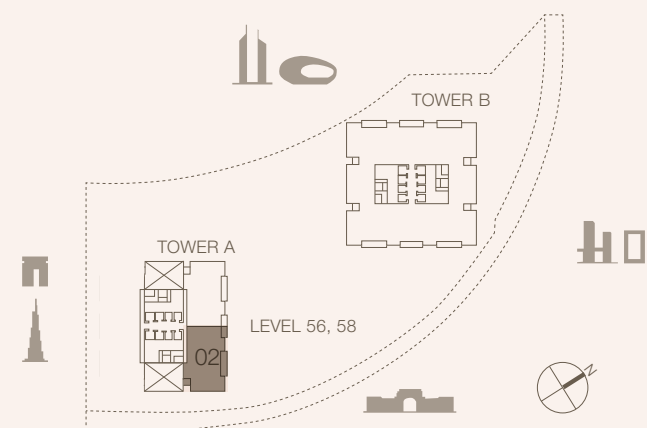
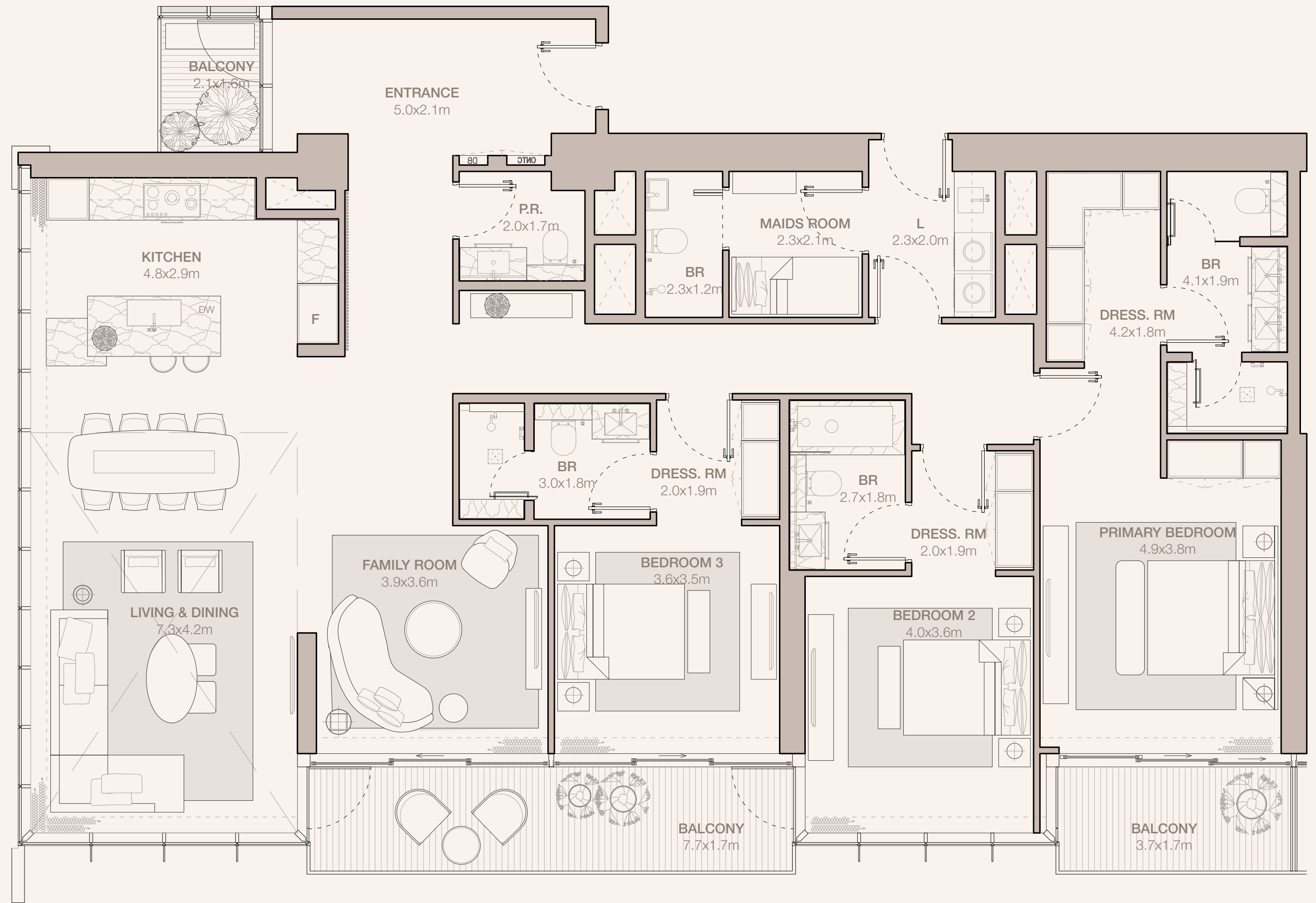
TOWER A

UNIT NUMBER
5602

SUITE AREA
213.73 SQM | 2300.57 SQFT
BALCONY AREA
23.83 SQM | 256.50 SQFT
TOTAL
237.56 SQM | 2557.07 SQFT

UNIT NUMBER
5802

SUITE AREA
214.45 SQM | 2308.32 SQFT
BALCONY AREA
23.83 SQM | 256.50 SQFT
TOTAL
238.28 SQM | 2564.82 SQFT



Disclaimer: Plans, details and unit orientation included are indicative only and are subject to change by the developer/seller at its sole discretion without notice and/or liability. All images, including features, finishes, furnishings, view and scale are illustrative only. Final areas, orientation, dimensions, layout and materials may differ from those stated.

JUMEIRAH

RESIDENCES

EMIRATES TOWERS

4-BEDROOM TYPE D1 (M)

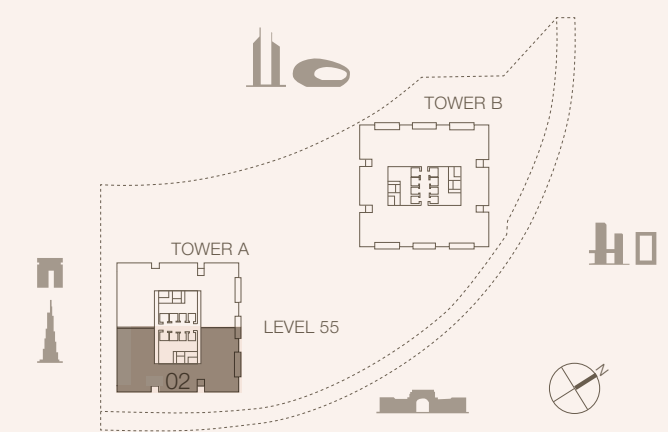
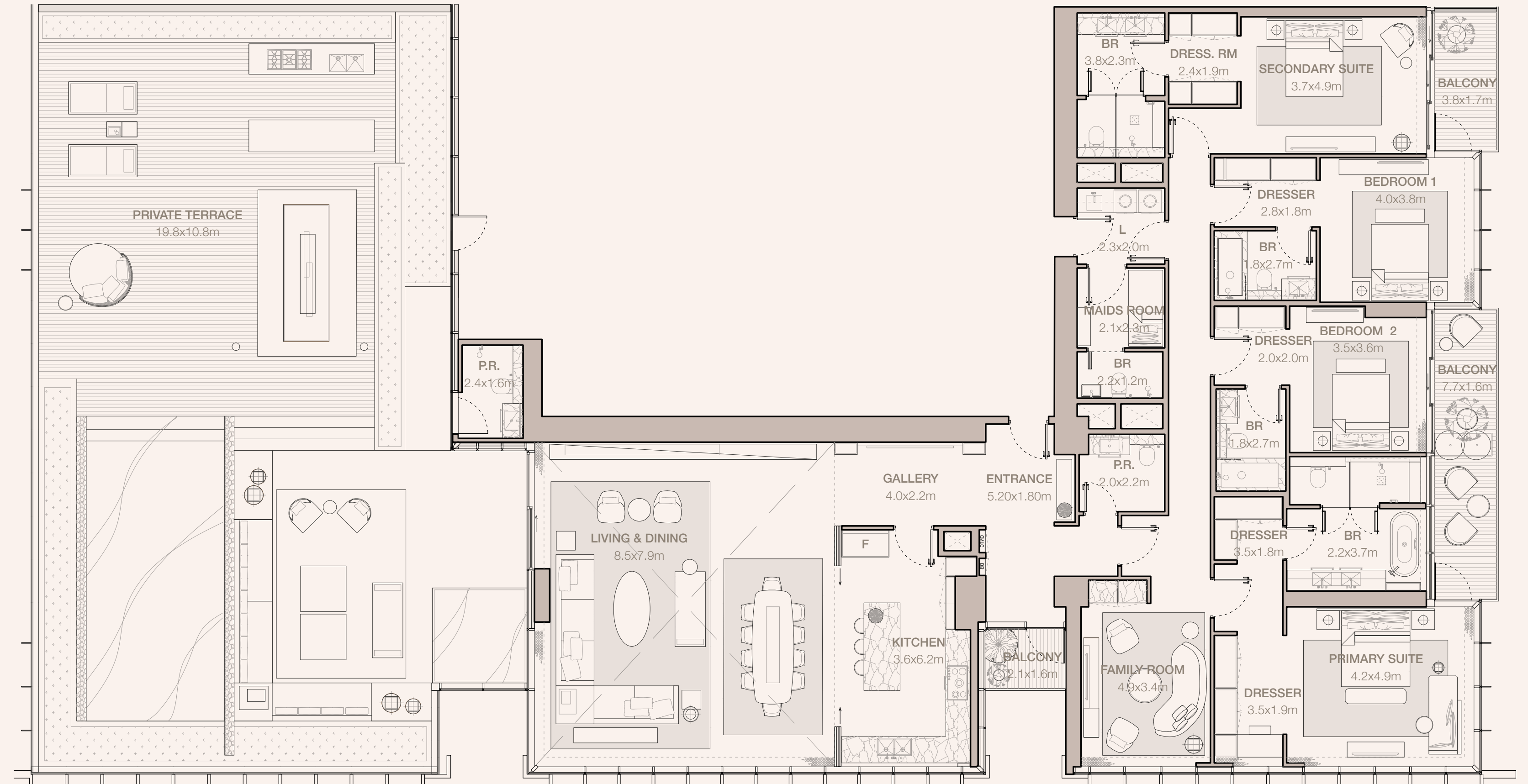
TOWER A

UNIT NUMBER
5502

SUITE AREA
333.53 SQM | 3590.09 SQFT

BALCONY AREA
258.2 SQM | 2779.24 SQFT

TOTAL
591.73 SQM | 6369.33 SQFT



Disclaimer: Plans, details and unit orientation included are indicative only and are subject to change by the developer/seller at its sole discretion without notice and/or liability. All images, including features, finishes, furnishings, view and scale are illustrative only. Final areas, orientation, dimensions, layout and materials may differ from those stated.

JUMEIRAH

RESIDENCES
EMIRATES TOWERS

4-BEDROOM TYPE D2 (M)

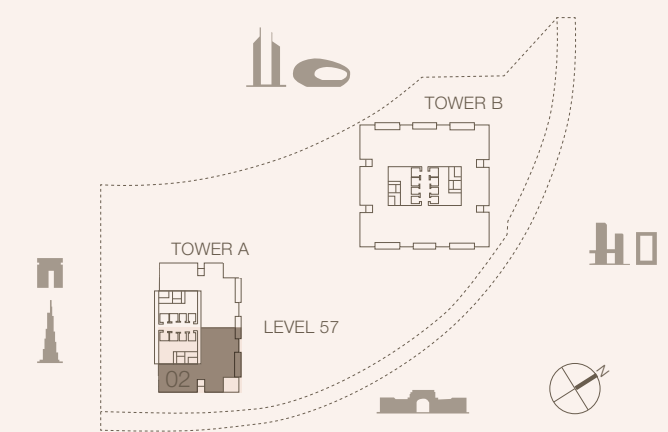
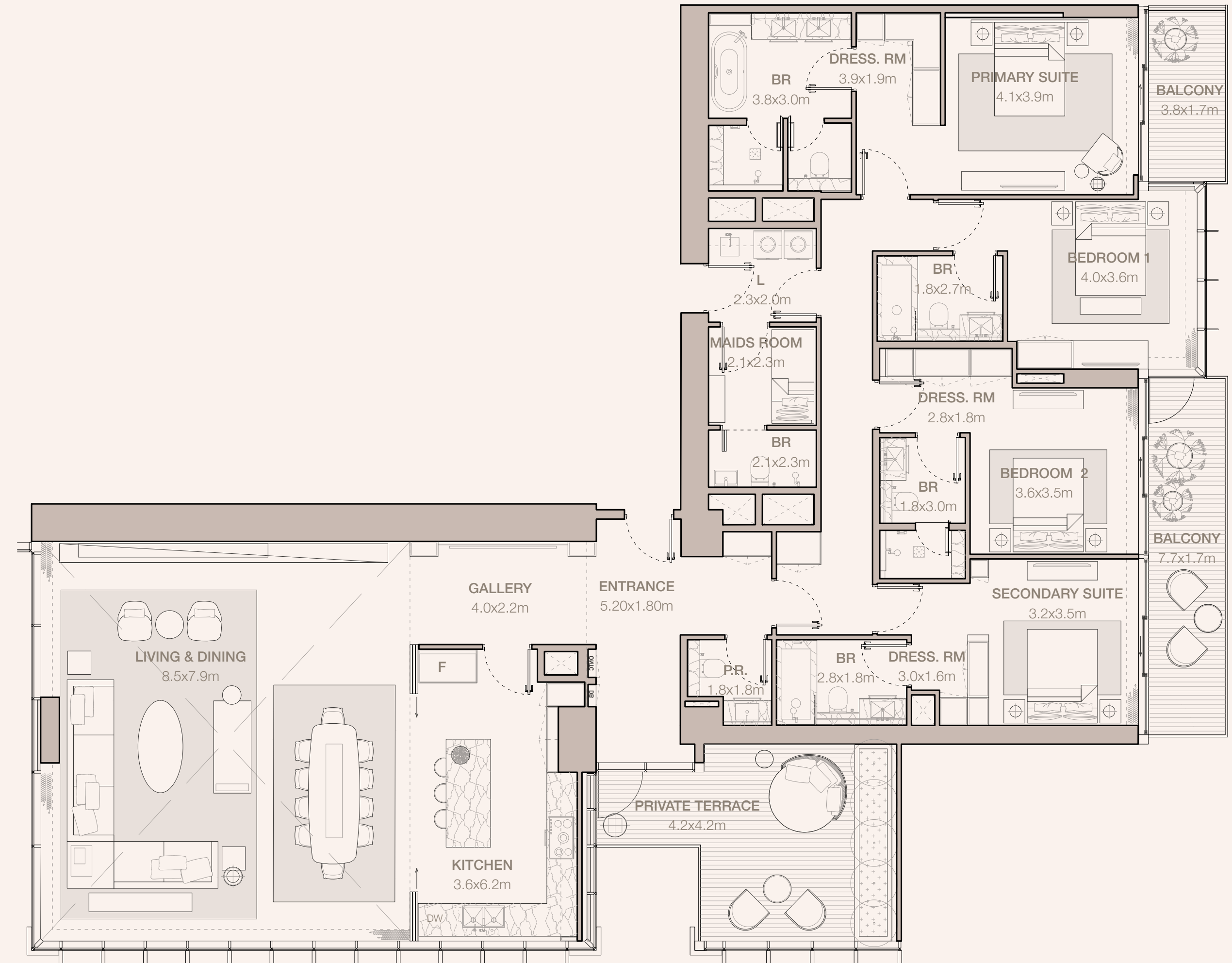
TOWER A

UNIT NUMBER
5702

SUITE AREA
278.67 SQM | 2999.58 SQFT

BALCONY AREA
43.48 SQM | 468.01 SQFT

TOTAL
322.15 SQM | 3467.59 SQFT



Disclaimer: Plans, details and unit orientation included are indicative only and are subject to change by the developer/seller at its sole discretion without notice and/or liability. All images, including features, finishes, furnishings, view and scale are illustrative only. Final areas, orientation, dimensions, layout and materials may differ from those stated.



TOWER A

JUMEIRAH

RESIDENCES

EMIRATES TOWERS

STARTING PRICE

3.51M

1-BEDROOM

4.78M

2-BEDROOM

6.15M

2-BEDROOM
+ MAID

10.21M

3-BEDROOM

11.01M

3-BEDROOM
DOUBLE HEIGHT

25.07M

4-BEDROOM

*ALL PRICES ARE IN AED

PAYMENT PLAN

20%

DOWN PAYMENT

ON BOOKING

5%

1ST INSTALMENT

NOVEMBER 2025

5%

2ND INSTALMENT

APRIL 2026

10%

3RD INSTALMENT

SEPTEMBER 2026

10%

4TH INSTALMENT

FEBRUARY 2027

5%

5TH INSTALMENT

JUNE 2027

5%

6TH INSTALMENT

OCTOBER 2027

40%

7TH INSTALMENT

AUGUST 2030 (HANDOVER)

*ESTIMATED CONSTRUCTION COMPLETION AUGUST 2030

ONLINE REGISTRATION PROCESS

DO'S

- Only use the link provided in the registration notification.
- Only register clients with genuine interest.
- Fill out your client's details where it states 'customer' and your personal details where it states 'broker'.
- To avoid delays at the booking stage, please ensure that your client's email address and mobile number are correct, and their name is exactly as it appears on their passport.
- Select the correct agency name.

DON'TS

- Do not register your client before receiving the official registration notification.
- Registrations received before the official notification will be excluded.
- Do not fill in your email ID in the client's email ID field.
- Do not fill in your mobile number in the client's mobile number field.
- Do not register the same client more than once.
- Do not register inaccurate client names.
- Do not forge, alter or duplicate tokens. This will significantly reduce your chances of obtaining a unit and increase the possibility of being excluded from future launches.

